


Anti-SLC10A2/ASBT antibody ab82170

★★★★★ [1 Abreviews](#) [1 References](#) [画像数 1](#)

製品の概要

製品名	Anti-SLC10A2/ASBT antibody
製品の詳細	Goat polyclonal to SLC10A2/ASBT
由来種	Goat
アプリケーション	適用あり: WB
種交差性	交差種: Mouse 交差が予測される動物種: Rat 
免疫原	Synthetic peptide corresponding to Mouse SLC10A2/ASBT aa 337-348 (C terminal). Sequence: C-DETNRKGFQPDEK

Database link: [NP_035518.1](#)

 [Run BLAST with](#)

 [Run BLAST with](#)

ポジティブ・コントロール Mouse Small Intestine lysate.

特記事項

The Life Science industry has been in the grips of a reproducibility crisis for a number of years. Abcam is leading the way in addressing this with our range of recombinant monoclonal antibodies and knockout edited cell lines for gold-standard validation. Please check that this product meets your needs before purchasing.

If you have any questions, special requirements or concerns, please send us an inquiry and/or contact our Support team ahead of purchase. Recommended alternatives for this product can be found below, along with publications, customer reviews and Q&As

製品の特性

製品の状態	Liquid
保存方法	Shipped at 4°C. Upon delivery aliquot and store at -20°C. Avoid repeated freeze / thaw cycles.
バッファー	pH: 7.30 Preservative: 0.02% Sodium azide Constituents: 0.5% BSA, 0.5% Tris buffered saline
精製度	Immunogen affinity purified
ポリ/モノ	ポリクローナル

アイソタイプ

IgG

アプリケーション

The Abpromise guarantee **Abpromise保証は、次のテスト済みアプリケーションにおけるab82170の使用に適用されます**
アプリケーションノートには、推奨の開始希釈率がありますが、適切な希釈率につきましてはご検討ください。

アプリケーション	Abreviews	特記事項
WB	★★★★☆ (1)	

追加情報

Peptide ELISA: Antibody detection limit dilution 1/32000.

WB: Use at a concentration of 0.5 - 1.5 µg/ml. Predicted molecular weight: 38 kDa.

Not yet tested in other applications.

Optimal dilutions/concentrations should be determined by the end user.

ターゲット情報

機能

Plays a critical role in the sodium-dependent reabsorption of bile acids from the lumen of the small intestine. Plays a key role in cholesterol metabolism.

関連疾患

Defects in SLC10A2 are a cause of primary bile acid malabsorption (PBAM) [MIM:613291]. PBAM is an idiopathic intestinal disorder associated with congenital diarrhea, steatorrhea, interruption of the enterohepatic circulation of bile acids, and reduced plasma cholesterol levels.

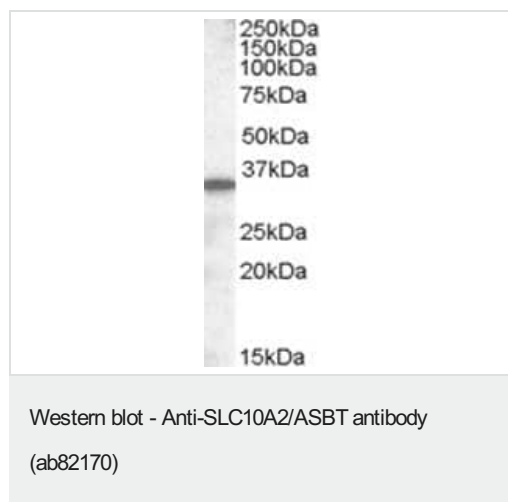
配列類似性

Belongs to the sodium:bile acid symporter family.

細胞内局在

Membrane.

画像



Anti-SLC10A2/ASBT antibody (ab82170) at 0.5 µg/ml + Mouse small intestine lysate in RIPA buffer at 35 µg

Developed using the ECL technique.

Predicted band size: 38 kDa

Observed band size: 35 kDa

Primary incubation was 1 hour.

Please note: All products are "FOR RESEARCH USE ONLY. NOT FOR USE IN DIAGNOSTIC PROCEDURES"

Our Abpromise to you: Quality guaranteed and expert technical support

- Replacement or refund for products not performing as stated on the datasheet
- Valid for 12 months from date of delivery
- Response to your inquiry within 24 hours

- We provide support in Chinese, English, French, German, Japanese and Spanish
- Extensive multi-media technical resources to help you
- We investigate all quality concerns to ensure our products perform to the highest standards

If the product does not perform as described on this datasheet, we will offer a refund or replacement. For full details of the Abpromise, please visit <https://www.abcam.co.jp/abpromise> or contact our technical team.

Terms and conditions

- Guarantee only valid for products bought direct from Abcam or one of our authorized distributors