

Anti-SKP2 antibody ab68455

1 Abbreviations 15 References 両極数 3

医薬用外劇物

製品の概要

製品名	Anti-SKP2 antibody
製品の詳細	Rabbit polyclonal to SKP2
由来種	Rabbit
アプリケーション	適用あり: WB, IHC-P
種交差性	交差種: Human
免疫原	Synthetic peptide corresponding to Human SKP2 aa 2-20 (N terminal). Different from the related rat and mouse sequences by three amino acids. Sequence: HRKHLQEIPDLSSNVATSF

Database link: [Q13309](#)

 [Run BLAST with](#)

 [Run BLAST with](#)

特記事項

The Life Science industry has been in the grips of a reproducibility crisis for a number of years. Abcam is leading the way in addressing this with our range of recombinant monoclonal antibodies and knockout edited cell lines for gold-standard validation. Please check that this product meets your needs before purchasing.

If you have any questions, special requirements or concerns, please send us an inquiry and/or contact our Support team ahead of purchase. Recommended alternatives for this product can be found below, along with publications, customer reviews and Q&As

製品の特性

製品の状態	Liquid
保存方法	Shipped at 4°C. Upon delivery aliquot and store at -20°C. Avoid freeze / thaw cycles.
バッファー	Preservatives: 0.025% Thimerosal (merthiolate), 0.025% Sodium azide Constituents: 2.5% BSA, 0.45% Sodium chloride, 0.1% Dibasic monohydrogen sodium phosphate
精製度	Immunogen affinity purified
ポリ/モノ	ポリクローナル
アイソタイプ	IgG

アプリケーション

The Abpromise guarantee

Abpromise保証は、次のテスト済みアプリケーションにおけるab68455の使用に適用されます

アプリケーションノートには、推奨の開始希釈率がありますが、適切な希釈率につきましてはご確認ください。

アプリケーション	Abreviews	特記事項
WB		Use a concentration of 1 µg/ml. Predicted molecular weight: 48 kDa.
IHC-P		Use a concentration of 1 - 2 µg/ml.

ターゲット情報

機能

Substrate recognition component of a SCF (SKP1-CUL1-F-box protein) E3 ubiquitin-protein ligase complex which mediates the ubiquitination and subsequent proteasomal degradation of target proteins involved in cell cycle progression, signal transduction and transcription. Specifically recognizes phosphorylated CDKN1B/p27kip and is involved in regulation of G1/S transition. Degradation of CDKN1B/p27kip also requires CKS1. Recognizes target proteins ORC1, CDT1, RBL2, MLL, CDK9, RAG2, FOXO1A, UBP43, and probably MYC, TOB1 and TAL1. Degradation of TAL1 also requires STUB1. Recognizes CDKN1A in association with CCNE1 or CCNE2 and CDK2.

パスウェイ

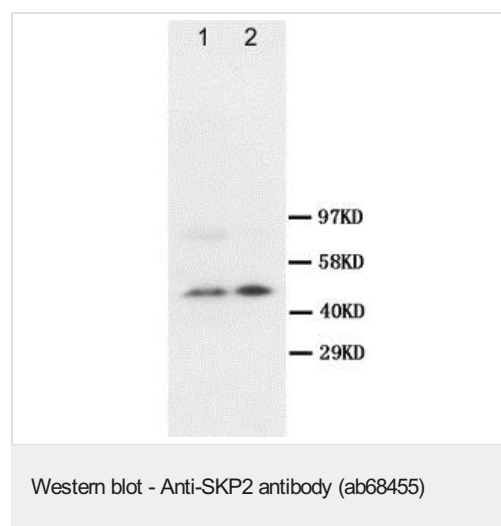
Protein modification; protein ubiquitination.

配列類似性

Contains 1 F-box domain.

Contains 9 LRR (leucine-rich) repeats.

画像



All lanes : Anti-SKP2 antibody (ab68455) at 1 µg/ml

Lane 1 : Whole cell lysates prepared from Hela cells

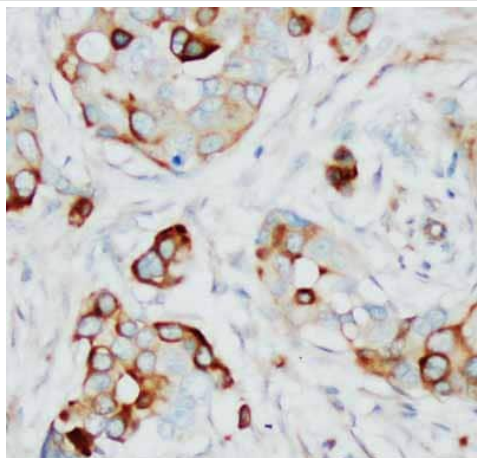
Lane 2 : Whole cell lysates prepared from 6T-CEM cells

Lysates/proteins at 50 µg per lane.

Secondary

All lanes : HRP conjugated Goat anti-rabbit IgG at 1/3000 dilution

Predicted band size: 48 kDa



Immunohistochemistry (Formalin/PFA-fixed paraffin-embedded sections) - Anti-SKP2 antibody (ab68455)

ab68455 at 1 µg/ml staining SKP2 in Human mammary cancer tissue sections by Immunohistochemistry (Formalin/ PFA fixed paraffin-embedded tissue sections). The tissue underwent enzymatic antigen retrieval in pepsin and trypsin. A Biotin-conjugated Goat anti-rabbit IgG was used as secondary at 1/200 dilution.



Western blot - Anti-SKP2 antibody (ab68455)

All lanes : Anti-SKP2 antibody (ab68455) at 1 µg/ml

Lane 1 : HeLa (Human epithelial carcinoma cell line) Whole Cell Lysate

Lane 2 : HEK293 (Human embryonic kidney cell line) Whole Cell Lysate

Lane 3 : Human placenta tissue lysate - total protein (**ab29745**)

Lysates/proteins at 10 µg per lane.

Secondary

All lanes : Goat Anti-Rabbit IgG H&L (HRP) preadsorbed (**ab97080**) at 1/5000 dilution

Developed using the ECL technique.

Performed under reducing conditions.

Predicted band size: 48 kDa

Observed band size: 53 kDa

Additional bands at: 29 kDa, 38 kDa. We are unsure as to the identity of these extra bands.

Exposure time: 1 minute

The predicted molecular weight of SKP2 is 48 kDa (SwissProt), however we expect to observe a banding pattern at 53 kDa. Abcam welcomes customer feedback and would appreciate any comments regarding this product and the data presented above.

Please note: All products are "FOR RESEARCH USE ONLY. NOT FOR USE IN DIAGNOSTIC PROCEDURES"

Our Abpromise to you: Quality guaranteed and expert technical support

- Replacement or refund for products not performing as stated on the datasheet
- Valid for 12 months from date of delivery
- Response to your inquiry within 24 hours
- We provide support in Chinese, English, French, German, Japanese and Spanish
- Extensive multi-media technical resources to help you
- We investigate all quality concerns to ensure our products perform to the highest standards

If the product does not perform as described on this datasheet, we will offer a refund or replacement. For full details of the Abpromise, please visit <https://www.abcam.co.jp/abpromise> or contact our technical team.

Terms and conditions

- Guarantee only valid for products bought direct from Abcam or one of our authorized distributors