

Anti-SKP2 antibody ab19877

KO 評価済

★★★★★ [2 Abreviews](#) [9 References](#) [画像数 3](#)

製品の概要

製品名	Anti-SKP2 antibody
製品の詳細	Rabbit polyclonal to SKP2
由来種	Rabbit
アプリケーション	適用あり: ICC/IF, WB
種交差性	交差種: Human 交差が予測される動物種: Mouse, Dog 
免疫原	Synthetic peptide conjugated to KLH derived from within residues 1 - 100 of Human SKP2. Immunogen の所有権に関して (Peptide available as ab26153 .)
ポジティブ・コントロール	Recombinant Human SKP2 protein (ab114385) can be used as a positive control in WB. Human heart tissue lysate This antibody gave a positive signal in the following formaldehyde fixed cell line: HeLa
特記事項	<p>The Life Science industry has been in the grips of a reproducibility crisis for a number of years. Abcam is leading the way in addressing this with our range of recombinant monoclonal antibodies and knockout edited cell lines for gold-standard validation. Please check that this product meets your needs before purchasing.</p> <p>If you have any questions, special requirements or concerns, please send us an inquiry and/or contact our Support team ahead of purchase. Recommended alternatives for this product can be found below, along with publications, customer reviews and Q&As</p>

製品の特性

製品の状態	Liquid
保存方法	Shipped at 4°C. Store at +4°C short term (1-2 weeks). Upon delivery aliquot. Store at -20°C or -80°C. Avoid freeze / thaw cycle.
バッファー	pH: 7.40 Preservative: 0.02% Sodium azide Constituent: PBS
	Batches of this product that have a concentration < 1mg/ml may have BSA added as a stabilising agent. If you would like information about the formulation of a specific lot, please contact our

	scientific support team who will be happy to help.
精製度	Immunogen affinity purified
ポリ/モノ	ポリクローナル
アイソタイプ	IgG

アプリケーション

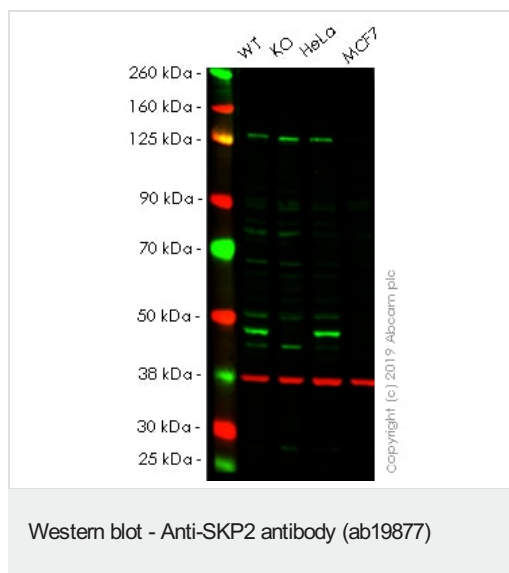
The Abpromise guarantee **Abpromise保証は、**次のテスト済みアプリケーションにおけるab19877の使用に適用されます
アプリケーションノートには、推奨の開始希釈率がありますが、適切な希釈率につきましてはご検討ください。

アプリケーション	Abreviews	特記事項
ICC/IF		Use a concentration of 5 µg/ml.
WB	★★★★★ (2)	Use a concentration of 1 µg/ml. Detects a band of approximately 46 kDa (predicted molecular weight: 48 kDa).

ターゲット情報

機能	Substrate recognition component of a SCF (SKP1-CUL1-F-box protein) E3 ubiquitin-protein ligase complex which mediates the ubiquitination and subsequent proteasomal degradation of target proteins involved in cell cycle progression, signal transduction and transcription. Specifically recognizes phosphorylated CDKN1B/p27kip and is involved in regulation of G1/S transition. Degradation of CDKN1B/p27kip also requires CKS1. Recognizes target proteins ORC1, CDT1, RBL2, MLL, CDK9, RAG2, FOXO1A, UBP43, and probably MYC, TOB1 and TAL1. Degradation of TAL1 also requires STUB1. Recognizes CDKN1A in association with CCNE1 or CCNE2 and CDK2.
パスウェイ	Protein modification; protein ubiquitination.
配列類似性	Contains 1 F-box domain. Contains 9 LRR (leucine-rich) repeats.

画像



All lanes : Anti-SKP2 antibody (ab19877) at 1 µg/ml

Lane 1 : Wild-type HAP1 whole cell lysate

Lane 2 : SKP2 knockout HAP1 whole cell lysate

Lane 3 : HeLa whole cell lysate

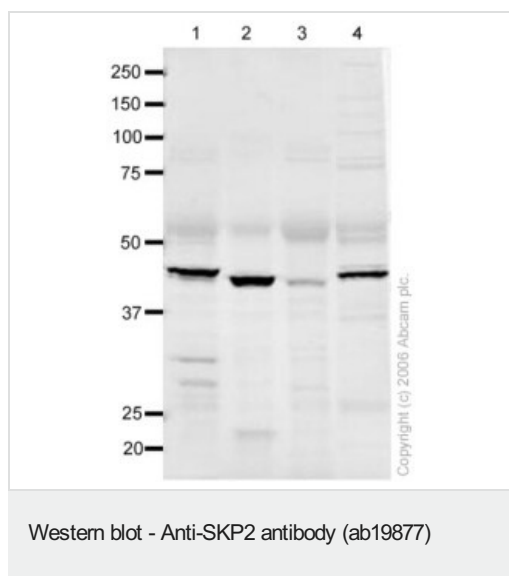
Lane 4 : MCF7 whole cell lysate

Lysates/proteins at 20 µg per lane.

Predicted band size: 48 kDa

Lanes 1 - 4: Merged signal (red and green). Green - ab19877 observed at 52 kDa. Red - loading control, **ab8245**, observed at 37 kDa.

ab19877 was shown to recognize in wild-type HAP1 cells as signal was lost at the expected MW in SKP2 knockout cells. Additional cross-reactive bands were observed in the wild-type and knockout cells. Wild-type and SKP2 knockout samples were subjected to SDS-PAGE. The membrane was blocked with 3% NF Milk. Ab19877 and **ab8245** (Mouse anti GAPDH loading control) were incubated overnight at 4°C at 1 µg/ml and 1/20000 dilution respectively. Blots were developed with Goat anti-Rabbit IgG H&L (IRDye® 800CW) preabsorbed **ab216773** and Goat anti-Mouse IgG H&L (IRDye® 680RD) preabsorbed **ab216776** secondary antibodies at 1/20000 dilution for 1 hour at room temperature before imaging.



All lanes : Anti-SKP2 antibody (ab19877) at 1 µg/ml

Lane 1 : Human heart tissue lysate

Lane 2 : Human brain tissue lysate

Lane 3 : Human kidney normal tissue lysate

Lane 4 : Human testis tissue lysate

Lysates/proteins at 20 µg per lane.

Secondary

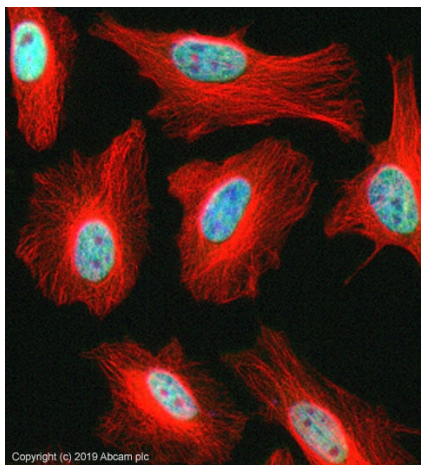
All lanes : Goat polyclonal to Rabbit IgG (Alexa Fluor® 680) at 1/10000 dilution

Performed under reducing conditions.

Predicted band size: 48 kDa

Observed band size: 46 kDa

ab19877 detects a band at approximately 46 kDa that corresponds in size to that predicted for SKP2 (48 kDa). This band is detected in several tissue lysates. This antibody was tested in normal liver tissue lysates, but no band was detected.



Immunocytochemistry/ Immunofluorescence - Anti-SKP2 antibody (ab19877)

ab19877 stained in HeLa cells. Cells were fixed with 4% paraformaldehyde (10 min) at room temperature and incubated with PBS containing 10% goat serum, 0.3 M glycine, 1% BSA and 0.1% Triton for 1h at room temperature to permeabilise the cells and block non-specific protein-protein interactions. The cells were then incubated with the antibody ab19877 at 5µg/ml and **ab7291** (Mouse monoclonal to alpha Tubulin - Loading Control) used at a 1/1000 dilution overnight at +4°C. The secondary antibodies were **ab150081**, Goat Anti-Rabbit IgG H&L (Alexa Fluor® 488) preadsorbed, (pseudo-colored green) and **ab150120**, Goat polyclonal Secondary Antibody to Mouse IgG - H&L (Alexa Fluor® 594) preadsorbed, (colored red), both used at a 1/1000 dilution for 1 hour at room temperature. DAPI was used to stain the cell nuclei (colored blue) at a concentration of 1.43 µM for 1 hour at room temperature.

Please note: All products are "FOR RESEARCH USE ONLY. NOT FOR USE IN DIAGNOSTIC PROCEDURES"

Our Abpromise to you: Quality guaranteed and expert technical support

- Replacement or refund for products not performing as stated on the datasheet
- Valid for 12 months from date of delivery
- Response to your inquiry within 24 hours
- We provide support in Chinese, English, French, German, Japanese and Spanish
- Extensive multi-media technical resources to help you
- We investigate all quality concerns to ensure our products perform to the highest standards

If the product does not perform as described on this datasheet, we will offer a refund or replacement. For full details of the Abpromise, please visit <https://www.abcam.co.jp/abpromise> or contact our technical team.

Terms and conditions

- Guarantee only valid for products bought direct from Abcam or one of our authorized distributors