

Anti-SIX2 antibody [EPR4824] ab111827

リコンビナント **RabMAb**

2 References [画像数 2](#)

製品の概要

製品名	Anti-SIX2 antibody [EPR4824]
製品の詳細	Rabbit monoclonal [EPR4824] to SIX2
由来種	Rabbit
アプリケーション	適用あり: WB 適用なし: Flow Cyt, ICC/IF, IHC-P or IP
種交差性	交差種: Mouse, Rat, Human
免疫原	Synthetic peptide. This information is proprietary to Abcam and/or its suppliers.
ポジティブ・コントロール	Skeletal Muscle (Rat) Nuclear Lysate - normal tissue (ab29375) can be used as a positive control in WB. Human, Mouse and Rat skeletal muscle lysates; L6 lysate
特記事項	This product is a recombinant monoclonal antibody, which offers several advantages including: <ul style="list-style-type: none"> - High batch-to-batch consistency and reproducibility - Improved sensitivity and specificity - Long-term security of supply - Animal-free production For more information see here . Our RabMAb [®] technology is a patented hybridoma-based technology for making rabbit monoclonal antibodies. For details on our patents, please refer to RabMAb[®] patents .

製品の特性

製品の状態	Liquid
保存方法	Shipped at 4°C. Store at -20°C. Stable for 12 months at -20°C.
バッファー	pH: 7.20 Preservative: 0.05% Sodium azide Constituents: 0.1% BSA, 40% Glycerol (glycerin, glycerine), 9.85% Tris glycine, 50% Tissue culture supernatant
精製度	Protein A purified
ポリ/モノ	モノクローナル
クローン名	EPR4824

アイソタイプIgG

アプリケーション

The Abpromise guarantee Abpromise保証は、 次のテスト済みアプリケーションにおけるab111827の使用に適用されます
アプリケーションノートには、推奨の開始希釈率がありますが、適切な希釈率につきましてはご検討ください。

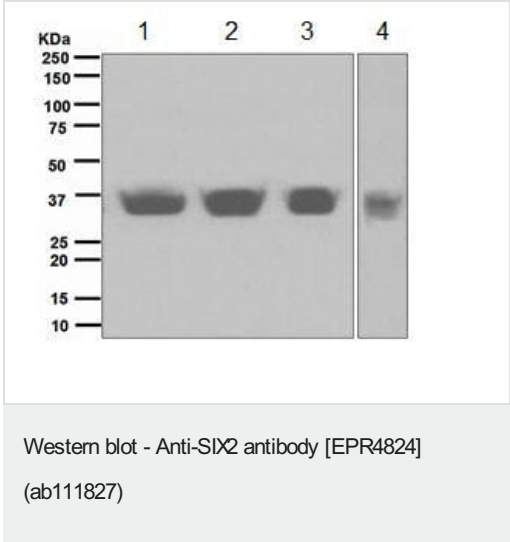
アプリケーション	Abreviews	特記事項
WB		1/1000 - 1/10000. Predicted molecular weight: 32 kDa.

追加情報Is unsuitable for Flow Cyt, ICC/IF, IHC-P or IP.

ターゲット情報

機能	May be involved in limb tendon and ligament development.
組織特異性	Strongly expressed in skeletal muscle.
配列類似性	Belongs to the SIX/Sine oculis homeobox family. Contains 1 homeobox DNA-binding domain.
細胞内局在	Nucleus.

画像



All lanes : Anti-SIX2 antibody [EPR4824] (ab111827) at 1/1000 dilution



- Lane 1 : Human skeletal muscle lysate
- Lane 2 : Mouse skeletal muscle lysate
- Lane 3 : Rat skeletal muscle lysate
- Lane 4 : L6 lysate

Lysates/proteins at 10 µg per lane.

Secondary
All lanes : HRP labelled goat anti-rabbit at 1/2000 dilution

Predicted band size: 32 kDa

Why choose a recombinant antibody?

 <p>Research with confidence Consistent and reproducible results</p>	 <p>Long-term and scalable supply Recombinant technology</p>
 <p>Success from the first experiment Confirmed specificity</p>	 <p>Ethical standards compliant Animal-free production</p>

Anti-SIX2 antibody [EPR4824] (ab111827)

Please note: All products are "FOR RESEARCH USE ONLY. NOT FOR USE IN DIAGNOSTIC PROCEDURES"

Our Abpromise to you: Quality guaranteed and expert technical support

- Replacement or refund for products not performing as stated on the datasheet
- Valid for 12 months from date of delivery
- Response to your inquiry within 24 hours
- We provide support in Chinese, English, French, German, Japanese and Spanish
- Extensive multi-media technical resources to help you
- We investigate all quality concerns to ensure our products perform to the highest standards

If the product does not perform as described on this datasheet, we will offer a refund or replacement. For full details of the Abpromise, please visit <https://www.abcam.co.jp/abpromise> or contact our technical team.

Terms and conditions

- Guarantee only valid for products bought direct from Abcam or one of our authorized distributors