

Anti-SIPA1L1 antibody ab91586

画像数 1

製品の概要

製品名	Anti-SIPA1L1 antibody
製品の詳細	Rabbit polyclonal to SIPA1L1
由来種	Rabbit
特異性	ab91586 is specific for SIPA1L1 and will not recognize the other SIPA1 family proteins.
アプリケーション	適用あり: IHC-P, WB
種交差性	交差種: Rat
免疫原	Synthetic peptide corresponding to Human SIPA1L1 (N terminal). The antibody was raised against a 16 amino acid synthetic peptide from near the amino terminus of human SIPA1L1. It is located within amino acids 40 to 90. Database link: O43166
ポジティブ・コントロール	WB: Rat brain tissue lysate.
特記事項	<p>The Life Science industry has been in the grips of a reproducibility crisis for a number of years. Abcam is leading the way in addressing this with our range of recombinant monoclonal antibodies and knockout edited cell lines for gold-standard validation. Please check that this product meets your needs before purchasing.</p> <p>If you have any questions, special requirements or concerns, please send us an inquiry and/or contact our Support team ahead of purchase. Recommended alternatives for this product can be found below, along with publications, customer reviews and Q&As</p>

製品の特性

製品の状態	Liquid
保存方法	Shipped at 4°C. Store at +4°C.
バッファー	pH: 7.2 Preservative: 0.02% Sodium azide Constituent: PBS
精製度	Immunogen affinity purified
ポリ/モノ	ポリクローナル
アイソタイプ	IgG

アプリケーション

The Abpromise guarantee **Abpromise保証は、** 次のテスト済みアプリケーションにおけるab91586の使用に適用されます
アプリケーションノートには、推奨の開始希釈率がありますが、適切な希釈率につきましてはご検討ください。

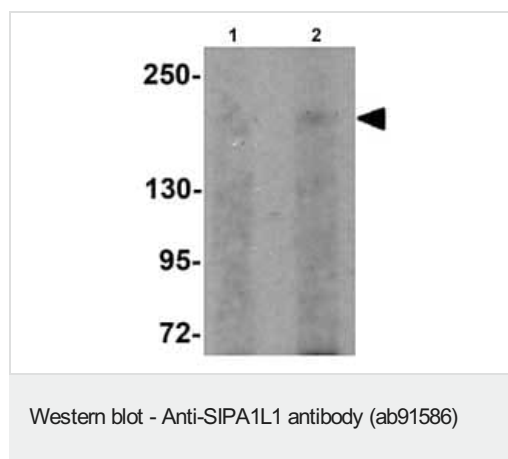
アプリケーション	Abreviews	特記事項
IF		Use a concentration of 20 µg/ml.
IHC-P		Use a concentration of 5 µg/ml.
WB		Use a concentration of 0.5 - 1 µg/ml. Predicted molecular weight: 200 kDa.

ターゲット情報

関連性 SIPA1L1 (Signal-induced proliferation associated-like protein 1) is a member of the SIPA1 family of RapGAPs. SIPA1L1 was initially identified as a binding partner and degradation target of the E6 oncoprotein of high-risk papillomaviruses. Recently, it was discovered that Casein kinase I epsilon (CKIε), a Wnt-regulated kinase that regulates Wnt/b-catenin signaling, also can bind to the carboxy-terminus of SIPA1L1. CKIε phosphorylates SIPA1L1, thereby reducing its stability and alleviating its inhibition of Rap1, a protein required for Wnt8/CKIε-mediated gastrulation during embryogenesis, suggesting SIPA1L1 plays important roles in embryo development as well as control of cell proliferation.

細胞内局在 Intracellular

画像



Lane 1 : Anti-SIPA1L1 antibody (ab91586) at 0.5 µg/ml

Lane 2 : Anti-SIPA1L1 antibody (ab91586) at 1 µg/ml

All lanes : Rat brain tissue lysate

Lysates/proteins at 15 µg per lane.

Predicted band size: 200 kDa

Please note: All products are "FOR RESEARCH USE ONLY. NOT FOR USE IN DIAGNOSTIC PROCEDURES"

Our Abpromise to you: Quality guaranteed and expert technical support

- Replacement or refund for products not performing as stated on the datasheet
- Valid for 12 months from date of delivery

- Response to your inquiry within 24 hours
- We provide support in Chinese, English, French, German, Japanese and Spanish
- Extensive multi-media technical resources to help you
- We investigate all quality concerns to ensure our products perform to the highest standards

If the product does not perform as described on this datasheet, we will offer a refund or replacement. For full details of the Abpromise, please visit <https://www.abcam.co.jp/abpromise> or contact our technical team.

Terms and conditions

- Guarantee only valid for products bought direct from Abcam or one of our authorized distributors