


Anti-Sigma1-receptor antibody - C-terminal ab53852

★★★★★ [5 Abreviews](#) [32 References](#) [画像数 1](#)

製品の概要

製品名	Anti-Sigma1-receptor antibody - C-terminal
製品の詳細	Rabbit polyclonal to Sigma1-receptor - C-terminal
由来種	Rabbit
アプリケーション	適用あり: WB
種交差性	交差種: Mouse, Rat 交差が予測される動物種: Cow, Dog, Human, Mink 
免疫原	Synthetic peptide corresponding to Rat Sigma1-receptor (C terminal). Database link: Q99720
特記事項	<p>The Life Science industry has been in the grips of a reproducibility crisis for a number of years. Abcam is leading the way in addressing this with our range of recombinant monoclonal antibodies and knockout edited cell lines for gold-standard validation. Please check that this product meets your needs before purchasing.</p> <p>If you have any questions, special requirements or concerns, please send us an inquiry and/or contact our Support team ahead of purchase. Recommended alternatives for this product can be found below, along with publications, customer reviews and Q&As</p>

製品の特性

製品の状態	Liquid
保存方法	Shipped at 4°C. Store at +4°C short term (1-2 weeks). Upon delivery aliquot. Store at -20°C long term. Avoid freeze / thaw cycle.
バッファー	pH: 7.40 Preservative: 0.1% Sodium azide Constituent: PBS
精製度	Immunogen affinity purified
ポリ/モノ	ポリクローナル
アイソタイプ	IgG

アプリケーション

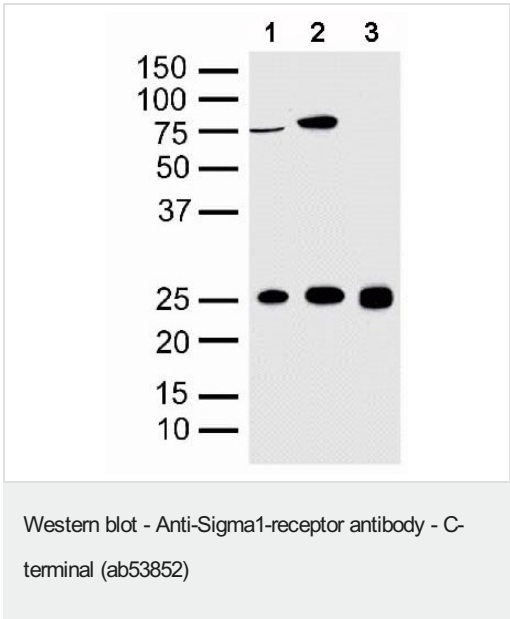
The Abpromise guarantee **Abpromise保証は、次のテスト済みアプリケーションにおけるab53852の使用に適用されます**
アプリケーションノートには、推奨の開始希釈率がありますが、適切な希釈率につきましてはご確認ください。

アプリケーション	Abreviews	特記事項
WB	★★★★★ (2)	Use a concentration of 2 µg/ml. Detects a band of approximately 25 kDa (predicted molecular weight: 25 kDa).

ターゲット情報

機能	Functions in lipid transport from the endoplasmic reticulum and is involved in a wide array of cellular functions probably through regulation of the biogenesis of lipid microdomains at the plasma membrane. Involved in the regulation of different receptors it plays a role in BDNF signaling and EGF signaling. Also regulates ion channels like the potassium channel and could modulate neurotransmitter release. Plays a role in calcium signaling through modulation together with ANK2 of the ITP3R-dependent calcium efflux at the endoplasmic reticulum. Plays a role in several other cell functions including proliferation, survival and death. Originally identified for its ability to bind various psychoactive drugs it is involved in learning processes, memory and mood alteration.
組織特異性	Widely expressed with higher expression in liver, colon, prostate, placenta, small intestine, heart and pancreas. Expressed in the retina by retinal pigment epithelial cells.
関連疾患	Amyotrophic lateral sclerosis 16, juvenile
配列類似性	Belongs to the ERG2 family.
細胞内局在	Nucleus inner membrane. Nucleus outer membrane. Endoplasmic reticulum membrane. Lipid droplet. Cell junction. Cell membrane. Cell projection > growth cone. Targeted to lipid droplets, cholesterol and galactosylceramide-enriched domains of the endoplasmic reticulum. Enriched at cell-cell communication regions, growth cone and postsynaptic structures. Localization is modulated by ligand-binding.

画像



All lanes : Anti-Sigma1-receptor antibody - C-terminal (ab53852)
at 2 µg/ml

Lane 1 : Mouse brain homogenate
Lane 2 : Rat liver homogenate
Lane 3 : Rat brain homogenate

Predicted band size: 25 kDa
Observed band size: 25 kDa
Additional bands at: 75 kDa. We are unsure as to the identity of these extra bands.

Please note: All products are "FOR RESEARCH USE ONLY. NOT FOR USE IN DIAGNOSTIC PROCEDURES"

Our Abpromise to you: Quality guaranteed and expert technical support

- Replacement or refund for products not performing as stated on the datasheet
- Valid for 12 months from date of delivery
- Response to your inquiry within 24 hours
- We provide support in Chinese, English, French, German, Japanese and Spanish
- Extensive multi-media technical resources to help you
- We investigate all quality concerns to ensure our products perform to the highest standards

If the product does not perform as described on this datasheet, we will offer a refund or replacement. For full details of the Abpromise, please visit <https://www.abcam.co.jp/abpromise> or contact our technical team.

Terms and conditions

- Guarantee only valid for products bought direct from Abcam or one of our authorized distributors