

Anti-Sialoadhesin/CD169 antibody [3D6.112] ab53443

6 References [画像数 1](#)

製品の概要

製品名	Anti-Sialoadhesin/CD169 antibody [3D6.112]
製品の詳細	Rat monoclonal [3D6.112] to Sialoadhesin/CD169
由来種	Rat
アプリケーション	適用あり: IHC-Fr
種交差性	交差種: Mouse
免疫原	Full length native protein (purified). This information is proprietary to Abcam and/or its suppliers.
特記事項	<p>Fusion partners: Spleen cells from an immunised AO rat were fused with the cells of the Y3 rat myeloma cell line.</p> <p>The Life Science industry has been in the grips of a reproducibility crisis for a number of years. Abcam is leading the way in addressing this with our range of recombinant monoclonal antibodies and knockout edited cell lines for gold-standard validation. Please check that this product meets your needs before purchasing.</p> <p>If you have any questions, special requirements or concerns, please send us an inquiry and/or contact our Support team ahead of purchase. Recommended alternatives for this product can be found below, along with publications, customer reviews and Q&As</p>

製品の特性

製品の状態	Liquid
保存方法	Shipped at 4°C. Store at +4°C short term (1-2 weeks). Upon delivery aliquot. Store at -20°C long term.
バッファー	Preservative: 0.09% Sodium azide Constituent: PBS
精製度	Protein G purified
特記事項 (精製)	Purified IgG prepared by affinity chromatography on Protein G from tissue culture supernatant.
一次抗体 備考	Fusion partners: Spleen cells from an immunised AO rat were fused with the cells of the Y3 rat myeloma cell line.
ポリ/モノ	モノクローナル
クローン名	3D6.112
アイソタイプ	IgG2a

アプリケーション

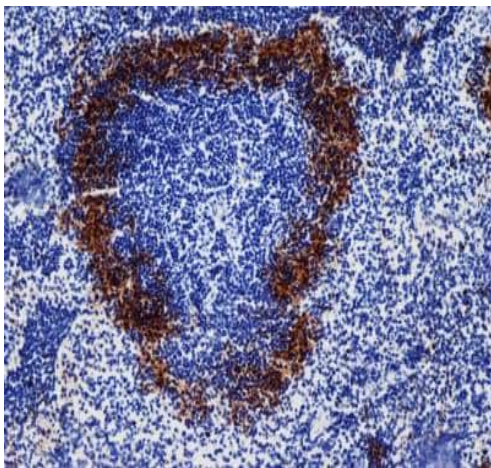
The Abpromise guarantee **Abpromise保証は、次のテスト済みアプリケーションにおけるab53443の使用に適用されます**
アプリケーションノートには、推奨の開始希釈率がありますが、適切な希釈率につきましてはご検討ください。

アプリケーション	Abreviews	特記事項
IHC-Fr		1/50 - 1/100.

ターゲット情報

機能	Acts as an endocytic receptor mediating clathrin dependent endocytosis. Macrophage-restricted adhesion molecule that mediates sialic-acid dependent binding to lymphocytes, including granulocytes, monocytes, natural killer cells, B-cells and CD8 T-cells. Preferentially binds to alpha-2,3-linked sialic acid (By similarity). Binds to SPN/CD43 on T-cells (By similarity). May play a role in hemopoiesis.
組織特異性	Expressed by macrophages in various tissues. High levels are found in spleen, lymph node, perivascular macrophages in brain and lower levels in bone marrow, liver Kupffer cells and lamina propria of colon and lung. Also expressed by inflammatory macrophages in rheumatoid arthritis.
配列類似性	Belongs to the immunoglobulin superfamily. SIGLEC (sialic acid binding Ig-like lectin) family. Contains 16 Ig-like C2-type (immunoglobulin-like) domains. Contains 1 Ig-like V-type (immunoglobulin-like) domain.
細胞内局在	Secreted and Cell membrane.

画像



ab53443 staining Sialoadhesin/CD169 in mouse spleen by Immunohistochemistry (Frozen sections).

Immunohistochemistry (Frozen sections) - Anti-Sialoadhesin/CD169 antibody [3D6.112] (ab53443)

Please note: All products are "FOR RESEARCH USE ONLY. NOT FOR USE IN DIAGNOSTIC PROCEDURES"

Our Abpromise to you: Quality guaranteed and expert technical support

- Replacement or refund for products not performing as stated on the datasheet
- Valid for 12 months from date of delivery
- Response to your inquiry within 24 hours

- We provide support in Chinese, English, French, German, Japanese and Spanish
- Extensive multi-media technical resources to help you
- We investigate all quality concerns to ensure our products perform to the highest standards

If the product does not perform as described on this datasheet, we will offer a refund or replacement. For full details of the Abpromise, please visit <https://www.abcam.co.jp/abpromise> or contact our technical team.

Terms and conditions

- Guarantee only valid for products bought direct from Abcam or one of our authorized distributors