

Anti-SHP1 (phospho Y564) antibody ab79294

画像数 1

製品の概要

製品名	Anti-SHP1 (phospho Y564) antibody
製品の詳細	Rabbit polyclonal to SHP1 (phospho Y564)
由来種	Rabbit
アプリケーション	適用あり: WB
種交差性	交差種: African green monkey
免疫原	Synthetic peptide corresponding to Human SHP1 (phospho Y564).
ポジティブ・コントロール	Extracts from COS7 cells, treated with EGF (200ng/ml, 30mins)
特記事項	<p>The Life Science industry has been in the grips of a reproducibility crisis for a number of years. Abcam is leading the way in addressing this with our range of recombinant monoclonal antibodies and knockout edited cell lines for gold-standard validation. Please check that this product meets your needs before purchasing.</p> <p>If you have any questions, special requirements or concerns, please send us an inquiry and/or contact our Support team ahead of purchase. Recommended alternatives for this product can be found below, along with publications, customer reviews and Q&As</p>

製品の特性

製品の状態	Liquid
保存方法	Shipped at 4°C. Upon delivery aliquot and store at -20°C. Avoid freeze / thaw cycles.
バッファー	<p>pH: 7</p> <p>Preservative: 0.02% Sodium azide</p> <p>Constituents: PBS, 50% Glycerol, 0.87% Sodium chloride</p> <p>Without Mg2+ and Ca2+</p>
精製度	Immunogen affinity purified
特記事項 (精製)	ab79294 is purified from rabbit antiserum by chromatography using an epitope specific phosphopeptide. The antibody against non phosphopeptide was removed by chromatography using non phosphopeptide corresponding to the phosphorylation site.
ポリ/モノ	ポリクローナル
アイソタイプ	IgG

アプリケーション

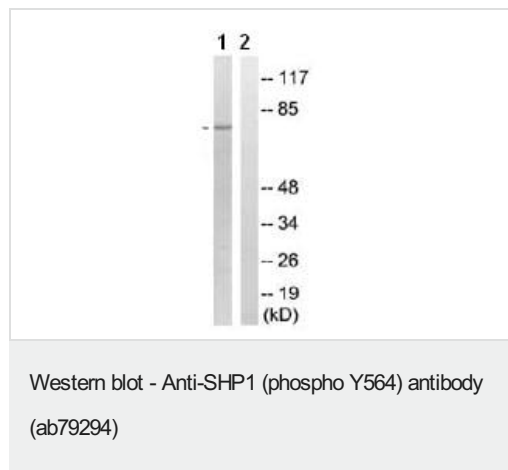
The Abpromise guarantee Abpromise保証は、次のテスト済みアプリケーションにおけるab79294の使用に適用されます
アプリケーションノートには、推奨の開始希釈率がありますが、適切な希釈率につきましてはご確認ください。

アプリケーション	Abreviews	特記事項
WB		1/500 - 1/1000. Predicted molecular weight: 68 kDa.

ターゲット情報

機能	Plays a key role in hematopoiesis. This PTPase activity may directly link growth factor receptors and other signaling proteins through protein-tyrosine phosphorylation. The SH2 regions may interact with other cellular components to modulate its own phosphatase activity against interacting substrates. Together with MTUS1, induces UBE2V2 expression upon angiotensin II stimulation.
組織特異性	Isoform 1 is expressed in hematopoietic cells. Isoform 2 is expressed in non-hematopoietic cells.
配列類似性	Belongs to the protein-tyrosine phosphatase family. Non-receptor class 2 subfamily. Contains 2 SH2 domains. Contains 1 tyrosine-protein phosphatase domain.
翻訳後修飾	Phosphorylated on serine and tyrosine residues.
細胞内局在	Cytoplasm. Nucleus. In neurons, translocates into the nucleus after treatment with angiotensin II.

画像



All lanes : Anti-SHP1 (phospho Y564) antibody (ab79294) at 1/1000 dilution

Lane 1 : extracts from COS7 cells, treated with EGF (200 ng/ml, 30 mins)

Lane 2 : extracts from COS7 cells, treated with EGF (200 ng/ml, 30 mins) with immunising peptide at 10 µg

Lysates/proteins at 30 µg per lane.

Predicted band size: 68 kDa

Please note: All products are "FOR RESEARCH USE ONLY. NOT FOR USE IN DIAGNOSTIC PROCEDURES"

Our Abpromise to you: Quality guaranteed and expert technical support

- Replacement or refund for products not performing as stated on the datasheet

- Valid for 12 months from date of delivery
- Response to your inquiry within 24 hours
- We provide support in Chinese, English, French, German, Japanese and Spanish
- Extensive multi-media technical resources to help you
- We investigate all quality concerns to ensure our products perform to the highest standards

If the product does not perform as described on this datasheet, we will offer a refund or replacement. For full details of the Abpromise, please visit <https://www.abcam.co.jp/abpromise> or contact our technical team.

Terms and conditions

- Guarantee only valid for products bought direct from Abcam or one of our authorized distributors