


# Anti-SHARPIN antibody ab125188

[5 References](#) [画像数 2](#)

### 製品の概要

---

製品名	Anti-SHARPIN antibody
製品の詳細	Rabbit polyclonal to SHARPIN
由来種	Rabbit
アプリケーション	<b>適用あり:</b> WB, IP
種交差性	<b>交差種:</b> Human <b>交差が予測される動物種:</b> Horse, Cow, Pig, Chimpanzee, Ferret, Rhesus monkey, Gorilla, Orangutan, Bat 
免疫原	Synthetic peptide, corresponding to a region within amino acids 25-75 of Human SHARPIN (NP_112236.3).
ポジティブ・コントロール	HeLa, Jurkat and 293T whole cell lysates
特記事項	<p>The Life Science industry has been in the grips of a reproducibility crisis for a number of years. Abcam is leading the way in addressing this with our range of recombinant monoclonal antibodies and knockout edited cell lines for gold-standard validation. Please check that this product meets your needs before purchasing.</p> <p>If you have any questions, special requirements or concerns, please send us an inquiry and/or contact our Support team ahead of purchase. Recommended alternatives for this product can be found below, along with publications, customer reviews and Q&amp;As</p>

### 製品の特性

---

製品の状態	Liquid
保存方法	Shipped at 4°C. Upon delivery aliquot and store at -20°C. Avoid freeze / thaw cycles.
バッファー	pH: 7 Preservative: 0.09% Sodium azide Constituent: 99% Tris citrate/phosphate
精製度	pH 7 to 8 Immunogen affinity purified
ポリ/モノ	ポリクローナル
アイソタイプ	IgG

## アプリケーション

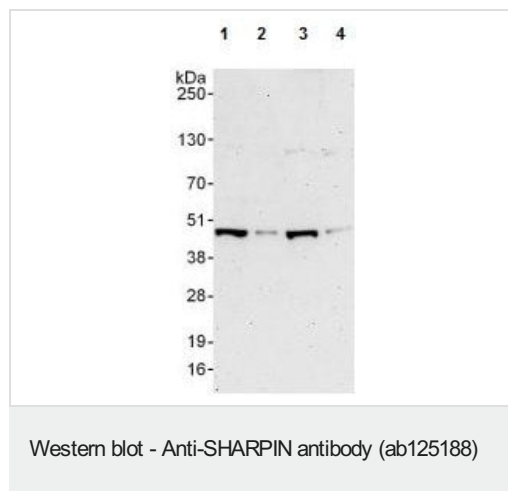
**The Abpromise guarantee**      **Abpromise保証は、**次のテスト済みアプリケーションにおけるab125188の使用に適用されます  
アプリケーションノートには、推奨の開始希釈率がありますが、適切な希釈率につきましてはご検討ください。

アプリケーション	Abreviews	特記事項
WB		1/2000 - 1/10000. Predicted molecular weight: 40 kDa.
IP		Use at 2-10 µg/mg of lysate.

## ターゲット情報

<b>機能</b>	May have a role in normal immune development and control of inflammation.
<b>組織特異性</b>	Highly expressed in skeletal muscle and placenta and at lower levels in brain, heart, colon without mucosa, thymus, spleen, kidney, liver, small intestine, lung and peripheral blood leukocytes.
<b>配列類似性</b>	Contains 1 RanBP2-type zinc finger.
<b>細胞内局在</b>	Cytoplasm. Enriched at synaptic sites in mature neurons where it colocalizes with SHANK1.

## 画像



**All lanes :** Anti-SHARPIN antibody (ab125188) at 0.1 µg/ml

**Lane 1 :** HeLa whole cell lysate at 50 µg

**Lane 2 :** HeLa whole cell lysate at 15 µg

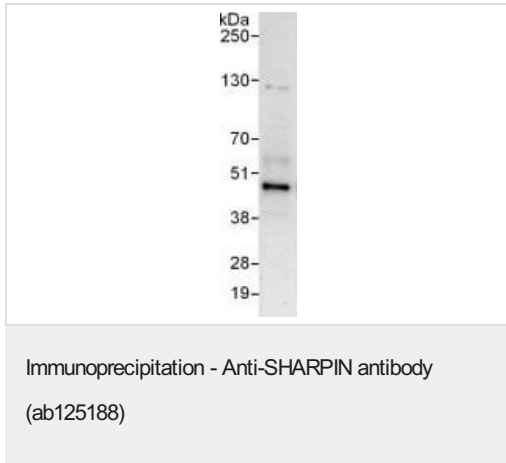
**Lane 3 :** 293T whole cell lysate at 50 µg

**Lane 4 :** Jurkat whole cell lysate at 50 µg

Developed using the ECL technique.

**Predicted band size:** 40 kDa

**Exposure time:** 3 minutes



ab125188, at 6 µg/mg lysate, detecting SHARPIN in HeLa cell lysate (1 mg of immunoprecipitate, 20% loaded in the lane) by Immunoprecipitation.

For the subsequent Western blot, ab125188 was used at 1 µg/ml.

The blot was developed using the ECL technique, with an exposure time of 30 seconds.

**Please note:** All products are "FOR RESEARCH USE ONLY. NOT FOR USE IN DIAGNOSTIC PROCEDURES"

### Our Abpromise to you: Quality guaranteed and expert technical support

---

- Replacement or refund for products not performing as stated on the datasheet
- Valid for 12 months from date of delivery
- Response to your inquiry within 24 hours
- We provide support in Chinese, English, French, German, Japanese and Spanish
- Extensive multi-media technical resources to help you
- We investigate all quality concerns to ensure our products perform to the highest standards

If the product does not perform as described on this datasheet, we will offer a refund or replacement. For full details of the Abpromise, please visit <https://www.abcam.co.jp/abpromise> or contact our technical team.

### Terms and conditions

---

- Guarantee only valid for products bought direct from Abcam or one of our authorized distributors