


Anti-SHARP2/DEC1 antibody ab70723

4 References [画像数 3](#)

製品の概要

製品名	Anti-SHARP2/DEC1 antibody
製品の詳細	Rabbit polyclonal to SHARP2/DEC1
由来種	Rabbit
アプリケーション	適用あり: IHC-P, WB, IP
種交差性	交差種: Human 交差が予測される動物種: Chimpanzee, Rhesus monkey, Gorilla, Orangutan 
免疫原	Synthetic peptide corresponding to Human SHARP2/DEC1 (C terminal). Database link: NP_003661.1
ポジティブ・コントロール	Whole cell lysates from HeLa and 293T cells.
特記事項	<p>The Life Science industry has been in the grips of a reproducibility crisis for a number of years. Abcam is leading the way in addressing this with our range of recombinant monoclonal antibodies and knockout edited cell lines for gold-standard validation. Please check that this product meets your needs before purchasing.</p> <p>If you have any questions, special requirements or concerns, please send us an inquiry and/or contact our Support team ahead of purchase. Recommended alternatives for this product can be found below, along with publications, customer reviews and Q&As</p>

製品の特性

製品の状態	Liquid
保存方法	Shipped at 4°C. Upon delivery aliquot and store at -20°C. Avoid freeze / thaw cycles.
バッファー	pH: 7 Preservative: 0.09% Sodium azide Constituents: 1.815% Tris, 1.764% Sodium citrate, 0.021% PBS
精製度	Immunogen affinity purified
特記事項 (精製)	ab70723 was affinity purified using an epitope specific to SHARP2/DEC1 immobilized on solid support.
ポリモノ	ポリクローナル
アイソタイプ	IgG

アプリケーション

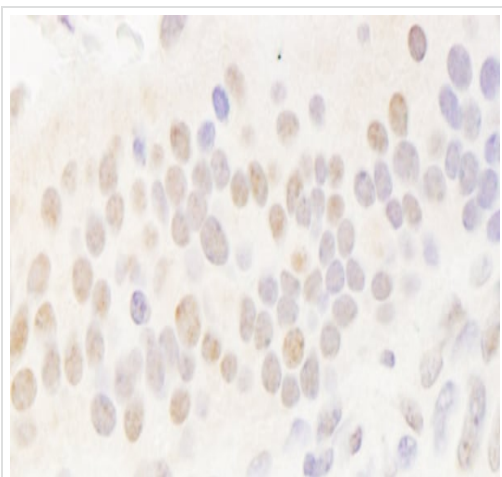
The Abpromise guarantee Abpromise保証は、 次のテスト済みアプリケーションにおけるab70723の使用に適用されます
アプリケーションノートには、推奨の開始希釈率がありますが、適切な希釈率につきましてはご検討ください。

アプリケーション	Abreviews	特記事項
IHC-P		1/500 - 1/2000. Perform heat mediated antigen retrieval with Tris/EDTA buffer pH 9.0 before commencing with IHC staining protocol.
WB		1/5000 - 1/15000. Detects a band of approximately 50 kDa (predicted molecular weight: 45 kDa).
IP		Use at 1-4 µg/mg of lysate.

ターゲット情報

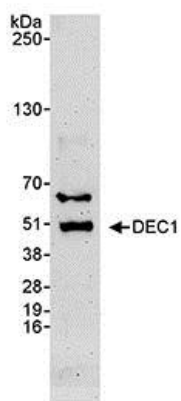
機能	Transcriptional repressor involved in the regulation of the circadian rhythm by negatively regulating the activity of the clock genes and clock-controlled genes. Acts as the negative limb of a novel autoregulatory feedback loop (DEC loop) which differs from the one formed by the PER and CRY transcriptional repressors (PER/CRY loop). Both these loops are interlocked as it represses the expression of PER1/2 and in turn is repressed by PER1/2 and CRY1/2. Represses the activity of the circadian transcriptional activator: CLOCK-ARNTL/BMAL1 ARNTL2/BMAL2 heterodimer by competing for the binding to E-box elements (5'-CACGTG-3') found within the promoters of its target genes. Negatively regulates its own expression and the expression of DBP and BHLHE41/DEC2. Acts as a corepressor of RXR and the RXR-LXR heterodimers and represses the ligand-induced RXRA and NR1H3/LXRA transactivation activity. May be involved in the regulation of chondrocyte differentiation via the cAMP pathway.
組織特異性	Expressed in cartilage, spleen, intestine, lung, and to a lesser extent in heart, brain, liver, muscle and stomach.
配列類似性	Contains 1 bHLH (basic helix-loop-helix) domain. Contains 1 Orange domain.
翻訳後修飾	Ubiquitinated; which may lead to proteasomal degradation. Sumoylation inhibits its ubiquitination and promotes its negative regulation of the CLOCK-ARNTL/BMAL1 heterodimer transcriptional activator activity.
細胞内局在	Cytoplasm. Nucleus. Predominantly localized in the nucleus (PubMed:11278694).

画像



Immunohistochemistry (Formalin/PFA-fixed paraffin-embedded sections) analysis of human breast carcinoma tissue labelling SHARP2/DEC1 with ab70723 at 1/1000 (1 µg/ml). Detection: DAB.

Immunohistochemistry (Formalin/PFA-fixed paraffin-embedded sections) - Anti-SHARP2/DEC1 antibody (ab70723)



Anti-SHARP2/DEC1 antibody (ab70723) at 0.1 µg/ml + Whole cell lysate from HeLa cells at 50 µg

Developed using the ECL technique.

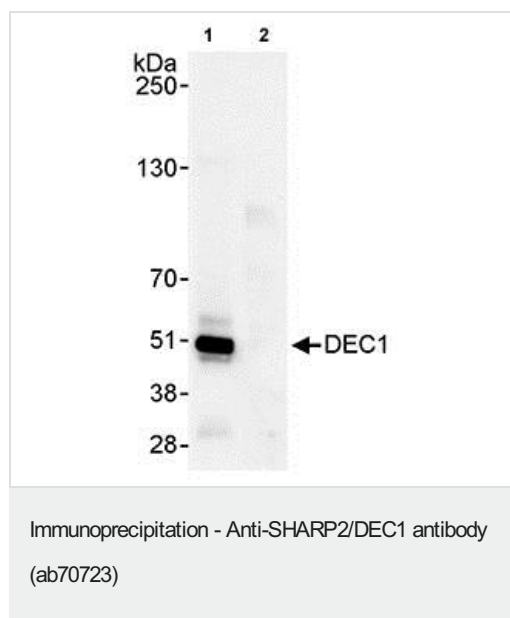
Predicted band size: 45 kDa

Observed band size: 50 kDa

Additional bands at: 65 kDa. We are unsure as to the identity of these extra bands.

Western blot - Anti-SHARP2/DEC1 antibody (ab70723)

Exposure time: 3 minutes



Detection of Human SHARP2/DEC1 by Immunoprecipitation in whole cell lysate from 293T cells (1 mg for IP, 20% of IP loaded), using ab70723 at 3 µg/mg lysate (Lane 1). Lane 2 represents rabbit IgG IP control. Subsequent Western blot detection of SHARP2/DEC1 was performed using ab70723 at 1 µg/ml. Chemiluminescence with exposure time of 30 seconds

Please note: All products are "FOR RESEARCH USE ONLY. NOT FOR USE IN DIAGNOSTIC PROCEDURES"

Our Abpromise to you: Quality guaranteed and expert technical support

- Replacement or refund for products not performing as stated on the datasheet
- Valid for 12 months from date of delivery
- Response to your inquiry within 24 hours
- We provide support in Chinese, English, French, German, Japanese and Spanish
- Extensive multi-media technical resources to help you
- We investigate all quality concerns to ensure our products perform to the highest standards

If the product does not perform as described on this datasheet, we will offer a refund or replacement. For full details of the Abpromise, please visit <https://www.abcam.co.jp/abpromise> or contact our technical team.

Terms and conditions

- Guarantee only valid for products bought direct from Abcam or one of our authorized distributors