

# Anti-SH3BP2 (phospho S427) antibody ab2176

画像数 1

### 製品の概要

**製品名** Anti-SH3BP2 (phospho S427) antibody  
**製品の詳細** Rabbit polyclonal to SH3BP2 (phospho S427)

① This product is a **fast track antibody**. It has been affinity purified and shows high titre values against the immunizing peptide by ELISA.

[Read the terms of use »](#)

**由来種** Rabbit  
**種交差性** 交差種: Human  
**免疫原** Synthetic peptide corresponding to Human SH3BP2 aa 400-500 (phospho S427).

 [Run BLAST with](#)

 [Run BLAST with](#)

### 特記事項

Phosphorylation of SH3BP2 occurs on Ser 427 for activation. SH3BP2 mediates interactions of huntingtin and MLK2 (mixed lineage kinase).

The Life Science industry has been in the grips of a reproducibility crisis for a number of years. Abcam is leading the way in addressing this with our range of recombinant monoclonal antibodies and knockout edited cell lines for gold-standard validation. Please check that this product meets your needs before purchasing.

If you have any questions, special requirements or concerns, please send us an inquiry and/or contact our Support team ahead of purchase. Recommended alternatives for this product can be found below, along with publications, customer reviews and Q&As

### 製品の特性

**製品の状態** Liquid  
**保存方法** Shipped at 4°C. Upon delivery aliquot and store at -20°C or -80°C. Avoid repeated freeze / thaw cycles.  
**バッファー** Preservative: 0.01% Sodium azide  
Constituents: 0.424% Potassium phosphate, 0.87% Sodium chloride  
**精製度** Immunogen affinity purified  
**特記事項(精製)** Affinity purified chromatography using phospho peptide coupled to agarose beads followed by solid phase adsorption(s) against non-phospho peptide and non-specific peptide to remove any

unwanted reactivities.

**一次抗体 備考**

Phosphorylation of SH3BP2 occurs on Ser 427 for activation. SH3BP2 mediates interactions of huntingtin and MLK2 (mixed lineage kinase).

**ポリ/モノ**

ポリクローナル

**アイソタイプ**

IgG

**アプリケーション**

Fast track antibodies constitute a diverse group of products that have been released to accelerate your research, but are not yet fully characterized. They have all been affinity purified and show high titre values against the immunizing peptide (by ELISA).

**Fast track terms of use**

| アプリケーション | Abreviews | 特記事項   |
|----------|-----------|--|
| WB       |           | Use at an assay dependent concentration. Predicted molecular weight: 62 kDa.<br>Reacts in Western blotting with a band at about 60kD, that probably corresponds to SH3BP1 (Not tested for phospho specificity by Western). |
| ELISA    |           | Use at an assay dependent concentration.<br>Tested in peptide ELISA against 0.1 ug of the immunizing peptide.  |

**ターゲット情報**

**機能**

Binds differentially to the SH3 domains of certain proteins of signal transduction pathways. Binds to phosphatidylinositols; linking the hemopoietic tyrosine kinase fes to the cytoplasmic membrane in a phosphorylation dependent mechanism.

**組織特異性**

Expressed in a variety of tissues including lung, liver, skeletal muscle, kidney and pancreas.

**関連疾患**

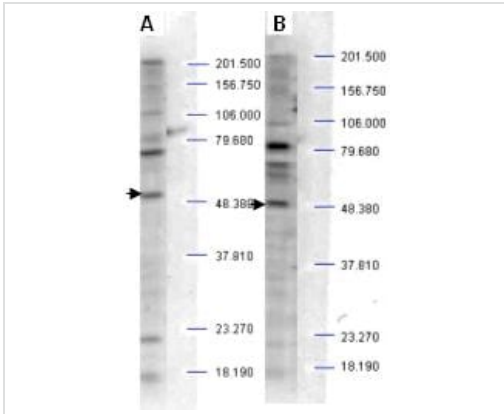
Defects in SH3BP2 are the cause of cherubism (CRBM) [MIM:118400]. CRBM is an autosomal dominant inherited syndrome characterized by excessive bone degradation of the upper and lower jaws, which often begins around three years of age. It is followed by development of fibrous tissue masses, which causes a characteristic facial swelling.

**配列類似性**

Contains 1 PH domain.  
Contains 1 SH2 domain.

**画像**

This Fast-Track antibody is not yet fully characterised. These images represent **inconclusive preliminary data**.



Western blot - Anti-SH3BP2 (phospho S427)  
antibody (ab2176)

Western blot analysis is shown using ab2176 to detect endogenous protein present in unstimulated human whole cell lysates. The band as indicated by the arrowheads is evident in both M059 cells (panel A) and PC-3 cells (panel B). Comparison to a molecular weight marker indicates a band of ~60 kDa that probably corresponds to human SH3BP2 protein. The blot was incubated with a 1:500 dilution of the antibody at room temperature followed by detection using standard techniques.

**Please note:** All products are "FOR RESEARCH USE ONLY. NOT FOR USE IN DIAGNOSTIC PROCEDURES"

### Terms and conditions

- Guarantee only valid for products bought direct from Abcam or one of our authorized distributors