

# Anti-SH2D1A/SAP antibody [EPR3168] ab109120

リコンビナント RabMAb<sup>®</sup>

画像数 4

### 製品の概要

製品名	Anti-SH2D1A/SAP antibody [EPR3168]
製品の詳細	Rabbit monoclonal [EPR3168] to SH2D1A/SAP
由来種	Rabbit
アプリケーション	<b>適用あり:</b> WB <b>適用なし:</b> Flow Cyt, ICC/IF or IHC-P
種交差性	<b>交差種:</b> Mouse, Rat, Human
免疫原	Synthetic peptide. This information is proprietary to Abcam and/or its suppliers.
ポジティブ・コントロール	WB: Molt-4, Jurkat, PC-12 and K562 cell lysates and mouse brain tissue lysate.
特記事項	This product is a recombinant monoclonal antibody, which offers several advantages including: <ul style="list-style-type: none"><li>- High batch-to-batch consistency and reproducibility</li><li>- Improved sensitivity and specificity</li><li>- Long-term security of supply</li><li>- Animal-free production</li></ul> For more information <a href="#">see here</a> . Our RabMAb <sup>®</sup> technology is a patented hybridoma-based technology for making rabbit monoclonal antibodies. For details on our patents, please refer to <a href="#">RabMAb<sup>®</sup> patents</a> .

### 製品の特性

製品の状態	Liquid
保存方法	Shipped at 4°C. Store at +4°C short term (1-2 weeks). Upon delivery aliquot. Store at -20°C. Stable for 12 months at -20°C.
バッファー	pH: 7.20 Preservative: 0.01% Sodium azide Constituents: 40% Glycerol (glycerin, glycerine), 59% PBS, 0.05% BSA
精製度	Protein A purified
ポリ/モノ	モノクローナル
クローン名	EPR3168
アイソタイプ	IgG

## アプリケーション

**The Abpromise guarantee** Abpromise保証は、次のテスト済みアプリケーションにおけるab109120の使用に適用されます  
アプリケーションノートには、推奨の開始希釈率がありますが、適切な希釈率につきましてはご検討ください。

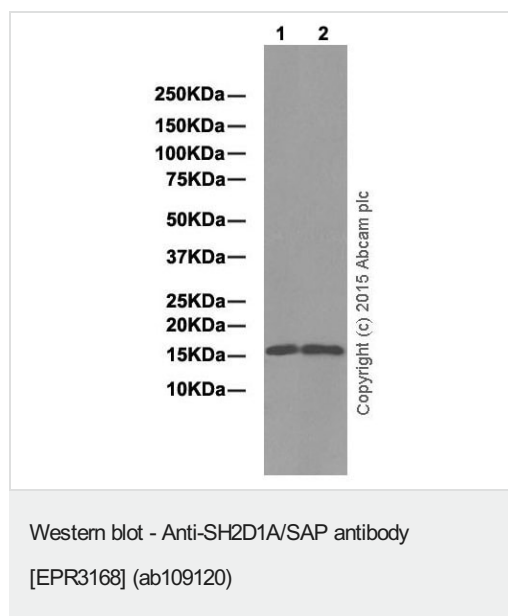
アプリケーション	Abreviews	特記事項
WB		1/1000 - 1/10000. Detects a band of approximately 16 kDa (predicted molecular weight: 14 kDa).

**追加情報** Is unsuitable for Flow Cyt, ICC/IF or IHC-P.

## ターゲット情報

<b>機能</b>	Inhibitor of the SLAM self-association. Acts by blocking recruitment of the SH2-domain-containing signal-transduction molecule SHP-2 to a docking site in the SLAM cytoplasmic region. Mediates interaction between FYN and SLAMF1. May also regulate the activity of the neurotrophin receptors NTRK1, NTRK2 and NTRK3.
<b>組織特異性</b>	Expressed at a high level in thymus and lung, with a lower level of expression in spleen and liver. Expressed in peripheral blood leukocytes, including T lymphocytes. Tends to be expressed at lower levels in peripheral blood leukocytes in patients with rheumatoid arthritis.
<b>関連疾患</b>	Defects in SH2D1A are a cause of lymphoproliferative syndrome X-linked type 1 (XLP1) [MIM:308240]; also known as X-linked lymphoproliferative disease (XLPD) or Duncan disease. XLP is a rare immunodeficiency characterized by extreme susceptibility to infection with Epstein-Barr virus (EBV). Symptoms include severe or fatal mononucleosis, acquired hypogammaglobulinemia, pancytopenia and malignant lymphoma.
<b>配列類似性</b>	Contains 1 SH2 domain.
<b>細胞内局在</b>	Cytoplasm.

## 画像



**All lanes** : Anti-SH2D1A/SAP antibody [EPR3168] (ab109120) at 1/2000 dilution (purified)

**Lane 1** : PC-12 whole cell lysate

**Lane 2** : Mouse brain tissue lysate

Lysates/proteins at 10 µg per lane.

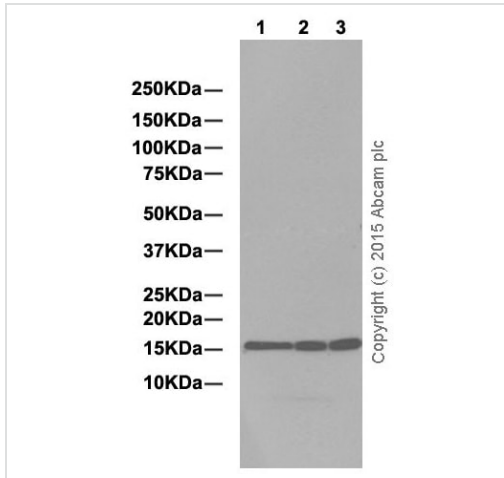
### Secondary

**All lanes** : Goat Anti-Rabbit IgG H&L (HRP) ([ab97051](#)) at 1/50000 dilution

**Predicted band size:** 14 kDa

**Observed band size:** 16 kDa

Blocking and dilution buffer: 5% NFDM/TBST.



Western blot - Anti-SH2D1A/SAP antibody [EPR3168] (ab109120)

**All lanes :** Anti-SH2D1A/SAP antibody [EPR3168] (ab109120) at 1/2000 dilution (purified)

**Lane 1 :** MOLT-4 whole cell lysate

**Lane 2 :** Jurkat whole cell lysate

**Lane 3 :** K562 whole cell lysate

Lysates/proteins at 10 µg per lane.

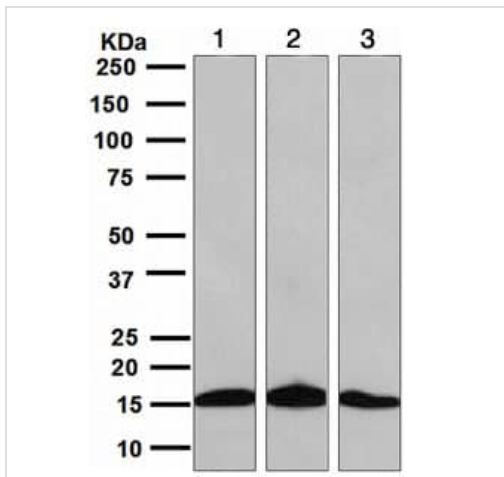
#### Secondary

**All lanes :** Goat Anti-Rabbit IgG H&L (HRP) (**ab97051**) at 1/50000 dilution

**Predicted band size:** 14 kDa

**Observed band size:** 16 kDa

Blocking and dilution buffer: 5% NFDM/TBST.



Western blot - Anti-SH2D1A/SAP antibody [EPR3168] (ab109120)

**All lanes :** Anti-SH2D1A/SAP antibody [EPR3168] (ab109120) at 1/1000 dilution (unpurified)

**Lane 1 :** MOLT-4 cell line lysate

**Lane 2 :** Jurkat cell line lysate

**Lane 3 :** K562 cell line lysate

Lysates/proteins at 10 µg per lane.

**Predicted band size:** 14 kDa

Why choose a recombinant antibody?

**Research with confidence**  
Consistent and reproducible results

**Long-term and scalable supply**  
Recombinant technology

**Success from the first experiment**  
Confirmed specificity

**Ethical standards compliant**  
Animal-free production

Anti-SH2D1A/SAP antibody [EPR3168] (ab109120)

**Please note:** All products are "FOR RESEARCH USE ONLY. NOT FOR USE IN DIAGNOSTIC PROCEDURES"

### Our Abpromise to you: Quality guaranteed and expert technical support

---

- Replacement or refund for products not performing as stated on the datasheet
- Valid for 12 months from date of delivery
- Response to your inquiry within 24 hours
- We provide support in Chinese, English, French, German, Japanese and Spanish
- Extensive multi-media technical resources to help you
- We investigate all quality concerns to ensure our products perform to the highest standards

If the product does not perform as described on this datasheet, we will offer a refund or replacement. For full details of the Abpromise, please visit <https://www.abcam.co.jp/abpromise> or contact our technical team.

### Terms and conditions

---

- Guarantee only valid for products bought direct from Abcam or one of our authorized distributors