

Anti-SGSH/HSS antibody ab96029

2 References [画像枚数?](#)

医薬用外劇物

製品の概要

製品名	Anti-SGSH/HSS antibody
製品の詳細	Rabbit polyclonal to SGSH/HSS
由来種	Rabbit
アプリケーション	適用あり: WB, IHC-P
種交差性	交差種: Human
免疫原	Recombinant fragment corresponding to Human SGSH/HSS aa 318-466.
ポジティブ・コントロール	Molt-4 whole cell lysate, OVCAR3 xenograft, A431 cells
特記事項	<p>The Life Science industry has been in the grips of a reproducibility crisis for a number of years. Abcam is leading the way in addressing this with our range of recombinant monoclonal antibodies and knockout edited cell lines for gold-standard validation. Please check that this product meets your needs before purchasing.</p> <p>If you have any questions, special requirements or concerns, please send us an inquiry and/or contact our Support team ahead of purchase. Recommended alternatives for this product can be found below, along with publications, customer reviews and Q&As</p>

製品の特性

製品の状態	Liquid
保存方法	Shipped at 4°C. Upon delivery aliquot and store at -20°C. Avoid freeze / thaw cycles.
バッファー	pH: 7.00 Preservative: 0.01% Thimerosal (merthiolate) Constituents: 1.21% Tris, 0.75% Glycine, 10% Glycerol (glycerin, glycerine)
精製度	Immunogen affinity purified
ポリ/モノ	ポリクローナル
アイソタイプ	IgG

アプリケーション

The Abpromise guarantee

Abpromise保証は、次のテスト済みアプリケーションにおけるab96029の使用に適用されません

アプリケーションノートには、推奨の開始希釈率がありますが、適切な希釈率につきましてはご確認ください。

アプリケーション	Abreviews	特記事項
WB		1/500 - 1/3000. Predicted molecular weight: 57 kDa.
IHC-P		1/100 - 1/500.

ターゲット情報

関連疾患

Defects in SGSH are the cause of mucopolysaccharidosis type 3A (MPS3A) [MIM:252900]; also known as Sanfilippo syndrome A. MPS3A is a severe form of mucopolysaccharidosis type 3, an autosomal recessive lysosomal storage disease due to impaired degradation of heparan sulfate. MPS3 is characterized by severe central nervous system degeneration, but only mild somatic disease. Onset of clinical features usually occurs between 2 and 6 years; severe neurologic degeneration occurs in most patients between 6 and 10 years of age, and death occurs typically during the second or third decade of life. MPS3A is characterized by earlier onset, rapid progression of symptoms and shorter survival.

配列類似性

Belongs to the sulfatase family.

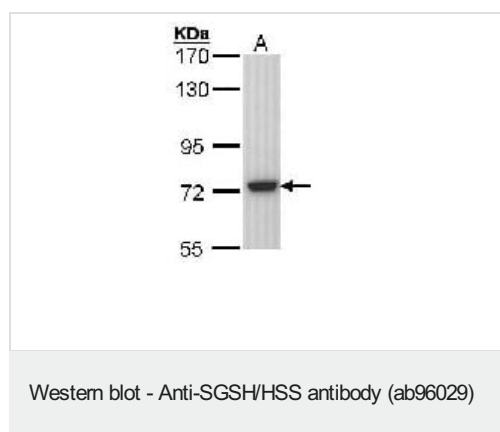
翻訳後修飾

The conversion to 3-oxoalanine (also known as C-formylglycine, FGly), of a serine or cysteine residue in prokaryotes and of a cysteine residue in eukaryotes, is critical for catalytic activity.

細胞内局在

Lysosome.

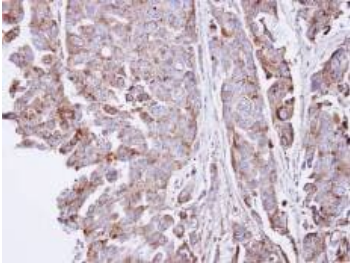
画像



Anti-SGSH/HSS antibody (ab96029) at 1/1000 dilution + Molt-4 whole cell lysate at 30 µg

Predicted band size: 57 kDa

7.5% SDS Page



Immunohistochemical analysis of formalin fixed paraffin embedded OVCAR3 xenograft, using ab96029 antibody at 1/100 dilution.

Immunohistochemistry (Formalin/PFA-fixed paraffin-embedded sections) - Anti-SGSH/HSS antibody (ab96029)

Please note: All products are "FOR RESEARCH USE ONLY. NOT FOR USE IN DIAGNOSTIC PROCEDURES"

Our Abpromise to you: Quality guaranteed and expert technical support

- Replacement or refund for products not performing as stated on the datasheet
- Valid for 12 months from date of delivery
- Response to your inquiry within 24 hours
- We provide support in Chinese, English, French, German, Japanese and Spanish
- Extensive multi-media technical resources to help you
- We investigate all quality concerns to ensure our products perform to the highest standards

If the product does not perform as described on this datasheet, we will offer a refund or replacement. For full details of the Abpromise, please visit <https://www.abcam.co.jp/abpromise> or contact our technical team.

Terms and conditions

- Guarantee only valid for products bought direct from Abcam or one of our authorized distributors