


Anti-SGK1 antibody [Y238] ab32374

リコンビナント **RabMAb**

18 References **画像数 4**

製品の概要

製品名	Anti-SGK1 antibody [Y238]
製品の詳細	Rabbit monoclonal [Y238] to SGK1
由来種	Rabbit
アプリケーション	適用あり: Flow Cyt (Intra), WB, IHC-P 適用なし: ICC/IF
種交差性	交差種: Mouse, Human 交差が予測される動物種: Rat 
免疫原	Synthetic peptide. This information is proprietary to Abcam and/or its suppliers.
ポジティブ・コントロール	WB: A431 and NIH3T3 cell lysates. IHC-P: Human kidney carcinoma.
特記事項	This product is a recombinant monoclonal antibody, which offers several advantages including: <ul style="list-style-type: none"> - High batch-to-batch consistency and reproducibility - Improved sensitivity and specificity - Long-term security of supply - Animal-free production For more information see here . Our RabMAb [®] technology is a patented hybridoma-based technology for making rabbit monoclonal antibodies. For details on our patents, please refer to RabMAb[®] patents .

製品の特性

製品の状態	Liquid
保存方法	Shipped at 4°C. Upon delivery aliquot and store at -20°C. Avoid freeze / thaw cycles.
バッファー	pH: 7.20 Preservative: 0.01% Sodium azide Constituents: 49% PBS, 50% Glycerol (glycerin, glycerine), 0.05% BSA
精製度	Protein A purified
ポリ/モノ	モノクローナル
クローン名	Y238
アイソタイプ	IgG

アプリケーション

The Abpromise guarantee **Abpromise保証は、次のテスト済みアプリケーションにおけるab32374の使用に適用されます**
アプリケーションノートには、推奨の開始希釈率がありますが、適切な希釈率につきましてはご検討ください。

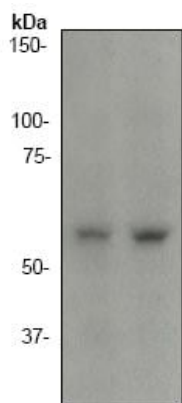
アプリケーション	Abreviews	特記事項
Flow Cyt (Intra)		1/30. ab172730 - Rabbit monoclonal IgG, is suitable for use as an isotype control with this antibody.
WB		1/500. Detects a band of approximately 57 kDa (predicted molecular weight: 49 kDa).
IHC-P		Use at an assay dependent concentration. Perform heat mediated antigen retrieval with citrate buffer pH 6 before commencing with IHC staining protocol.

追加情報 Is unsuitable for ICC/IF.

ターゲット情報

機能	Protein kinase that plays an important role in cellular stress response. Activates certain potassium, sodium, and chloride channels, suggesting an involvement in the regulation of processes such as cell survival, neuronal excitability and renal sodium excretion. Sustained high levels and activity may contribute to conditions such as hypertension and diabetic nephropathy. Mediates cell survival signals, phosphorylates and negatively regulates pro-apoptotic FOXO3A. Phosphorylates NEDD4L, which leads to its inactivation and to the subsequent activation of various channels and transporters such as ENaC, KCNA3/Kv1.3 or EAAT1. Isoform 2 exhibited a greater effect on cell plasma membrane expression of ENaC and Na(+) transport than isoform 1.
組織特異性	Expressed in most tissues with highest levels in the pancreas, followed by placenta, kidney and lung. Isoform 2 is strongly expressed in brain and pancreas, weaker in heart, placenta, lung, liver and skeletal muscle.
配列類似性	Belongs to the protein kinase superfamily. AGC Ser/Thr protein kinase family. Contains 1 AGC-kinase C-terminal domain. Contains 1 protein kinase domain.
ドメイン	Isoform 2 subcellular localization at the plasma membrane is mediated by the sequences within the first 120 amino acids.
翻訳後修飾	Regulated by phosphorylation. Phosphoinositide 3-kinase (PI3-kinase) pathway promotes phosphorylation at Ser-422 which in turn increases the phosphorylation of Thr-256 by PDPK1. Ubiquitinated by NEDD4L; which promotes proteasomal degradation. Ubiquitinated by SYVN1 at the endoplasmic reticulum; which promotes rapid proteasomal degradation and maintains a high turnover rate in resting cells. Isoform 2 shows enhanced stability. Isoform 2 resistance to proteasomal degradation is mediated by the sequences within the first 120-amino acid.
細胞内局在	Cell membrane and Cytoplasm. Nucleus. Endoplasmic reticulum. Nuclear, upon phosphorylation.

画像



Western blot - Anti-SGK1 antibody [Y238] (ab32374)

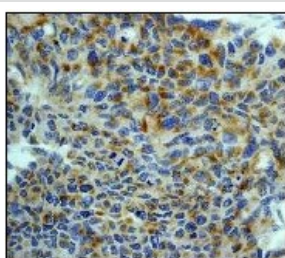
All lanes : Anti-SGK1 antibody [Y238] (ab32374) at 1/500 dilution

Lane 1 : A431 cell lysate

Lane 2 : NIH3T3 cell lysate

Predicted band size: 49 kDa

Observed band size: 57 kDa

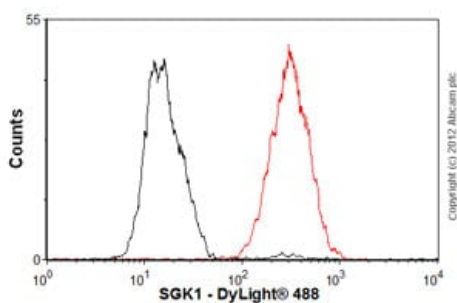


Immunohistochemistry (Formalin/PFA-fixed paraffin-embedded sections) - Anti-SGK1 antibody [Y238] (ab32374)

Ab32374, at a 1/50 dilution, staining SGK1 in paraffin embedded human kidney carcinoma tissue sections by Immunohistochemistry.

Perform heat mediated antigen retrieval with citrate buffer pH 6 before commencing with IHC staining protocol.

Perform heat mediated antigen retrieval with citrate buffer pH 6 before commencing with IHC staining protocol.



Flow Cytometry (Intracellular) - Anti-SGK1 antibody [Y238] (ab32374)

Overlay histogram showing HEK293 cells stained with ab32374 (red line). The cells were fixed with 80% methanol (5 min) and then permeabilized with 0.1% PBS-Tween for 20 min. The cells were then incubated in 1x PBS / 10% normal goat serum / 0.3M glycine to block non-specific protein-protein interactions followed by the antibody (ab32374, 1/100) for 30 min at 22°C. The secondary antibody used was DyLight® 488 goat anti-rabbit IgG (H+L) (**ab96899**) at 1/500 dilution for 30 min at 22°C. Isotype control antibody (black line) was rabbit IgG (monoclonal) (1µg/1x10⁶ cells) used under the same conditions. Acquisition of >5,000 events was performed. This antibody gave a positive signal in HEK293 cells fixed with 4% paraformaldehyde (10 min)/permeabilized with 0.1% PBS-Tween for 20 min used under the same conditions.

Why choose a recombinant antibody?



Research with confidence
Consistent and reproducible results



Long-term and scalable supply
Recombinant technology



Success from the first experiment
Confirmed specificity



Ethical standards compliant
Animal-free production

Anti-SGK1 antibody [Y238] (ab32374)

Please note: All products are "FOR RESEARCH USE ONLY. NOT FOR USE IN DIAGNOSTIC PROCEDURES"

Our Abpromise to you: Quality guaranteed and expert technical support

- Replacement or refund for products not performing as stated on the datasheet
- Valid for 12 months from date of delivery
- Response to your inquiry within 24 hours
- We provide support in Chinese, English, French, German, Japanese and Spanish
- Extensive multi-media technical resources to help you
- We investigate all quality concerns to ensure our products perform to the highest standards

If the product does not perform as described on this datasheet, we will offer a refund or replacement. For full details of the Abpromise, please visit <https://www.abcam.co.jp/abpromise> or contact our technical team.

Terms and conditions

- Guarantee only valid for products bought direct from Abcam or one of our authorized distributors