

Anti-SGK1 antibody ab59337

[28 References](#) [画像数 4](#)

製品の概要

| | |
|----------|---|
| 製品名 | Anti-SGK1 antibody |
| 製品の詳細 | Rabbit polyclonal to SGK1 |
| 由来種 | Rabbit |
| 特異性 | Detects endogenous levels of total SGK protein. |
| アプリケーション | 適用あり: ICC/IF, WB, IHC-P |
| 種交差性 | 交差種: Human |
| 免疫原 | Synthesized non-phosphopeptide derived from human SGK1 around the phosphorylation site of serine 78 (P-P-S ^P -P-S). |
| 特記事項 | <p>The Life Science industry has been in the grips of a reproducibility crisis for a number of years. Abcam is leading the way in addressing this with our range of recombinant monoclonal antibodies and knockout edited cell lines for gold-standard validation. Please check that this product meets your needs before purchasing.</p> <p>If you have any questions, special requirements or concerns, please send us an inquiry and/or contact our Support team ahead of purchase. Recommended alternatives for this product can be found below, along with publications, customer reviews and Q&As</p> |

製品の特性

| | |
|--------|--|
| 製品の状態 | Liquid |
| 保存方法 | Shipped at 4°C. Upon delivery aliquot and store at -20°C. Avoid freeze / thaw cycles. |
| バッファー | pH: 7.40 Preservative: 0.02% Sodium azide Constituents: PBS, 50% Glycerol, 0.87% Sodium chloride |
| 精製度 | Immunogen affinity purified |
| ポリ/モノ | ポリクローナル |
| アイソタイプ | IgG |

アプリケーション

The Abpromise guarantee

Abpromise保証は、次のテスト済みアプリケーションにおけるab59337の使用に適用されます

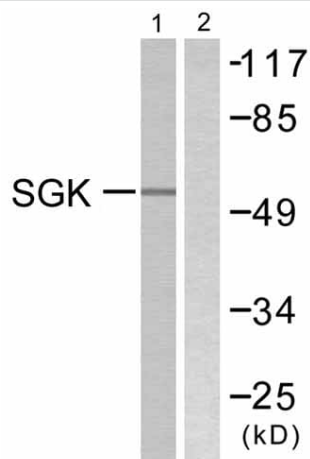
アプリケーションノートには、推奨の開始希釈率がありますが、適切な希釈率につきましてはご確認ください。

| アプリケーション | Abreviews | 特記事項 |
|----------|-----------|--|
| ICC/IF | | Use a concentration of 1 µg/ml. |
| WB | | 1/500 - 1/1000. Detects a band of approximately 55 kDa (predicted molecular weight: 49 kDa). |
| IHC-P | | 1/50 - 1/100. |

ターゲット情報

| | |
|-------|--|
| 機能 | Protein kinase that plays an important role in cellular stress response. Activates certain potassium, sodium, and chloride channels, suggesting an involvement in the regulation of processes such as cell survival, neuronal excitability and renal sodium excretion. Sustained high levels and activity may contribute to conditions such as hypertension and diabetic nephropathy. Mediates cell survival signals, phosphorylates and negatively regulates pro-apoptotic FOXO3A. Phosphorylates NEDD4L, which leads to its inactivation and to the subsequent activation of various channels and transporters such as ENaC, KCNA3/Kv1.3 or EAAT1. Isoform 2 exhibited a greater effect on cell plasma membrane expression of ENaC and Na(+) transport than isoform 1. |
| 組織特異性 | Expressed in most tissues with highest levels in the pancreas, followed by placenta, kidney and lung. Isoform 2 is strongly expressed in brain and pancreas, weaker in heart, placenta, lung, liver and skeletal muscle. |
| 配列類似性 | Belongs to the protein kinase superfamily. AGC Ser/Thr protein kinase family. Contains 1 AGC-kinase C-terminal domain. Contains 1 protein kinase domain. |
| ドメイン | Isoform 2 subcellular localization at the plasma membrane is mediated by the sequences within the first 120 amino acids. |
| 翻訳後修飾 | Regulated by phosphorylation. Phosphoinositide 3-kinase (PI3-kinase) pathway promotes phosphorylation at Ser-422 which in turn increases the phosphorylation of Thr-256 by PDPK1. Ubiquitinated by NEDD4L; which promotes proteasomal degradation. Ubiquitinated by SYVN1 at the endoplasmic reticulum; which promotes rapid proteasomal degradation and maintains a high turnover rate in resting cells. Isoform 2 shows enhanced stability. Isoform 2 resistance to proteasomal degradation is mediated by the sequences within the first 120-amino acid. |
| 細胞内局在 | Cell membrane and Cytoplasm. Nucleus. Endoplasmic reticulum. Nuclear, upon phosphorylation. |

画像



Western blot - Anti-SGK1 antibody (ab59337)

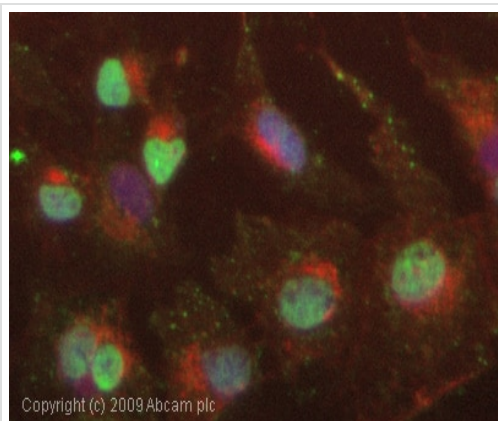
All lanes : Anti-SGK1 antibody (ab59337) at 1/500 dilution

Lane 1 : 293 cells treated with heat shock

Lane 2 : 293 cells treated with heat shock with immunizing non-phosphopeptide

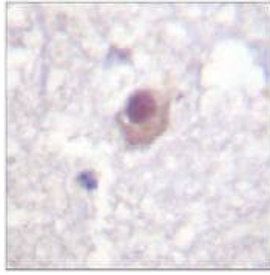
Predicted band size: 49 kDa

Observed band size: 55 kDa



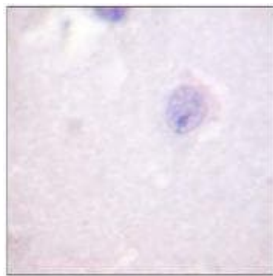
Immunocytochemistry/ Immunofluorescence - Anti-SGK1 antibody (ab59337)

ICC/IF image of ab59337 stained HepG2 cells. The cells were 4% formaldehyde fixed (10 min) and then incubated in 1%BSA / 10% normal goat serum / 0.3M glycine in 0.1% PBS-Tween for 1h to permeabilise the cells and block non-specific protein-protein interactions. The cells were then incubated with the antibody (ab59337, 1µg/ml) overnight at +4°C. The secondary antibody (green) was Alexa Fluor® 488 goat anti-rabbit IgG (H+L) used at a 1/1000 dilution for 1h. Alexa Fluor® 594 WGA was used to label plasma membranes (red) at a 1/200 dilution for 1h. DAPI was used to stain the cell nuclei (blue) at a concentration of 1.43µM.



ab59337, at a 1/50-1/100 dilution, staining SGK1 in Human brain sections.

Immunohistochemistry (Formalin/PFA-fixed paraffin-embedded sections) - Anti-SGK1 antibody (ab59337)



ab59337, at a 1/50-1/100 dilution, staining SGK1 in Human brain sections, in the presence of the immunizing peptide.

Immunohistochemistry (Formalin/PFA-fixed paraffin-embedded sections) - Anti-SGK1 antibody (ab59337)

Please note: All products are "FOR RESEARCH USE ONLY. NOT FOR USE IN DIAGNOSTIC PROCEDURES"

Our Abpromise to you: Quality guaranteed and expert technical support

- Replacement or refund for products not performing as stated on the datasheet
- Valid for 12 months from date of delivery
- Response to your inquiry within 24 hours
- We provide support in Chinese, English, French, German, Japanese and Spanish
- Extensive multi-media technical resources to help you
- We investigate all quality concerns to ensure our products perform to the highest standards

If the product does not perform as described on this datasheet, we will offer a refund or replacement. For full details of the Abpromise, please visit <https://www.abcam.co.jp/abpromise> or contact our technical team.

Terms and conditions

- Guarantee only valid for products bought direct from Abcam or one of our authorized distributors