


Anti-SFRS8 antibody ab72044

画像数 3

製品の概要

| | |
|--------------|-----------------------------------------------------------------------------------------------------------------------------------------------------------------------------------------------------------------------------------------------------------------------------------------------------------------------------------------------------------------------------------------------------------------------------------------------------------------------------------------------------------------------------------------------------------------------------------------------------------------|
| 製品名 | Anti-SFRS8 antibody |
| 製品の詳細 | Rabbit polyclonal to SFRS8 |
| 由来種 | Rabbit |
| アプリケーション | 適用あり: WB, IP, IHC-P |
| 種交差性 | 交差種: Human 交差が予測される動物種: Rhesus monkey, Gorilla, Orangutan  |
| 免疫原 | Synthetic peptide corresponding to Human SFRS8. Database link: Q12872 |
| ポジティブ・コントロール | HeLa whole cell lysate. |
| 特記事項 | <p>The Life Science industry has been in the grips of a reproducibility crisis for a number of years. Abcam is leading the way in addressing this with our range of recombinant monoclonal antibodies and knockout edited cell lines for gold-standard validation. Please check that this product meets your needs before purchasing.</p> <p>If you have any questions, special requirements or concerns, please send us an inquiry and/or contact our Support team ahead of purchase. Recommended alternatives for this product can be found below, along with publications, customer reviews and Q&As</p> |

製品の特性

| | |
|----------|------------------------------------------------------------------------------------------------|
| 製品の状態 | Liquid |
| 保存方法 | Shipped at 4°C. Upon delivery aliquot and store at -20°C. Avoid freeze / thaw cycles. |
| バッファー | pH: 6.8 Preservative: 0.09% Sodium azide Constituents: 0.1% BSA, Tris buffered saline |
| 精製度 | Immunogen affinity purified |
| 特記事項(精製) | ab72044 was affinity purified using an epitope specific to SFRS8 immobilized on solid support. |
| ポリ/モノ | ポリクローナル |
| アイソタイプ | IgG |

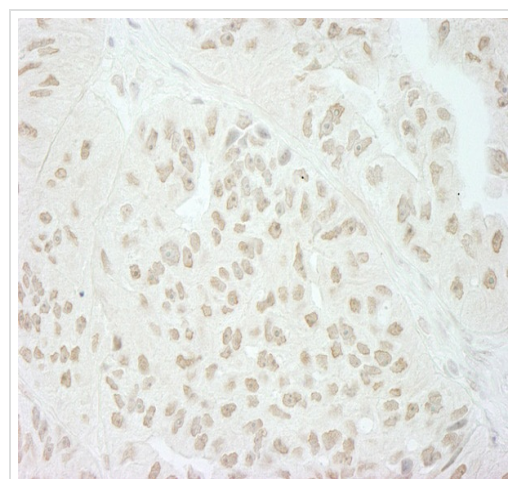
The Abpromise guarantee Abpromise保証は、 次のテスト済みアプリケーションにおけるab72044の使用に適用されます
アプリケーションノートには、推奨の開始希釈率がありますが、適切な希釈率につきましてはご検討ください。

| アプリケーション | Abreviews | 特記事項 |
|----------|-----------|------------------------------------------------------------------------------------------------------------------------------------|
| WB | | 1/2000 - 1/10000. Detects a band of approximately 150 kDa (predicted molecular weight: 105 kDa). |
| IP | | Use at 2-5 µg/mg of lysate. |
| IHC-P | | 1/200 - 1/1000. Perform heat mediated antigen retrieval with Tris/EDTA buffer pH 9.0 before commencing with IHC staining protocol. |

ターゲット情報

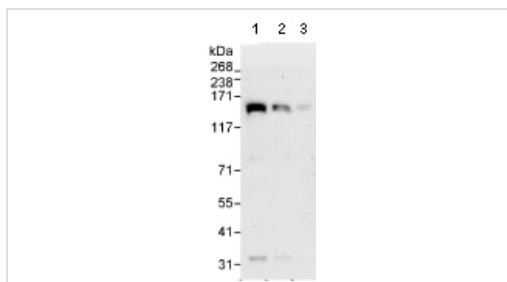
| | |
|-------|--------------------------------------------------------------------------------------------------------------------------------------------------------------------------------------------------------------------------------------------------------------------------------------------------------------------------------------------------------------------------|
| 関連性 | SFRS8 is a human homolog of Drosophila splicing regulatory protein. This gene autoregulates its expression by control of splicing of its first two introns. In addition, it also regulates the splicing of fibronectin and CD45 genes. Multiple alternatively spliced variants have been identified. Two alternatively spliced variants have been characterized to date. |
| 細胞内局在 | Nuclear |

画像



Immunohistochemistry (Formalin/PFA-fixed paraffin-embedded sections) analysis of human breast carcinoma tissue labelling SFRS8 with ab72044 at 1/200 (1µg/ml). Detection: DAB.

Immunohistochemistry (Formalin/PFA-fixed paraffin-embedded sections) - Anti-SFRS8 antibody (ab72044)



Western blot - Anti-SFRS8 antibody (ab72044)

All lanes : Anti-SFRS8 antibody (ab72044) at 0.04 µg/ml

Lane 1 : HeLa whole cell lysate at 50 µg

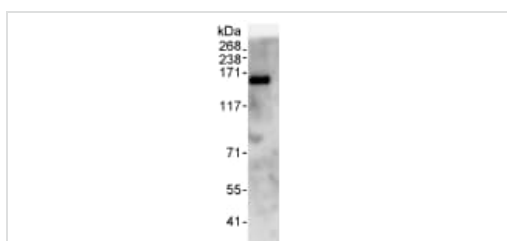
Lane 2 : HeLa whole cell lysate at 15 µg

Lane 3 : HeLa whole cell lysate at 5 µg

Predicted band size: 105 kDa

Observed band size: 150 kDa

Exposure time: 3 minutes



Immunoprecipitation - Anti-SFRS8 antibody
(ab72044)

Detection of SFRS8 by Western Blot of Immunoprecipitate.

ab72044 at 1µg/ml staining SFRS8 in HeLa whole cell lysate immunoprecipitated using ab72044 at 3µg/mg lysate (1 mg/IP; 20% of IP loaded/lane).

Detection: Chemiluminescence with exposure time of 30 seconds.

Please note: All products are "FOR RESEARCH USE ONLY. NOT FOR USE IN DIAGNOSTIC PROCEDURES"

Our Abpromise to you: Quality guaranteed and expert technical support

- Replacement or refund for products not performing as stated on the datasheet
- Valid for 12 months from date of delivery
- Response to your inquiry within 24 hours
- We provide support in Chinese, English, French, German, Japanese and Spanish
- Extensive multi-media technical resources to help you
- We investigate all quality concerns to ensure our products perform to the highest standards

If the product does not perform as described on this datasheet, we will offer a refund or replacement. For full details of the Abpromise, please visit <https://www.abcam.co.jp/abpromise> or contact our technical team.

Terms and conditions

- Guarantee only valid for products bought direct from Abcam or one of our authorized distributors