

### Anti-SETD1B antibody ab112049

★★★★★ [1 Abreviews](#) [画像数 2](#)

#### 製品の概要

製品名	Anti-SETD1B antibody
製品の詳細	Rabbit polyclonal to SETD1B
由来種	Rabbit
アプリケーション	<b>適用あり:</b> IHC-P
種交差性	<b>交差種:</b> Human <b>交差が予測される動物種:</b> Rabbit, Cow, Chimpanzee, Gorilla 
免疫原	Synthetic peptide corresponding to Human SETD1B aa 350-400.
ポジティブ・コントロール	Human Breast Carcinoma, Human Ovarian Carcinoma, and Human Testicular Seminoma tissues
特記事項	<p>The Life Science industry has been in the grips of a reproducibility crisis for a number of years. Abcam is leading the way in addressing this with our range of recombinant monoclonal antibodies and knockout edited cell lines for gold-standard validation. Please check that this product meets your needs before purchasing.</p> <p>If you have any questions, special requirements or concerns, please send us an inquiry and/or contact our Support team ahead of purchase. Recommended alternatives for this product can be found below, along with publications, customer reviews and Q&amp;As</p>

#### 製品の特性

製品の状態	Liquid
保存方法	Shipped at 4°C. Upon delivery aliquot and store at -20°C. Avoid freeze / thaw cycles.
バッファー	pH: 6.8 Preservative: 0.09% Sodium azide Constituents: 99% Tris citrate/phosphate, 0.1% BSA
精製度	Immunogen affinity purified
ポリ/モノ	ポリクローナル
アイソタイプ	IgG

#### アプリケーション

The Abpromise guarantee Abpromise保証は、 次のテスト済みアプリケーションにおけるab112049の使用に適用されます

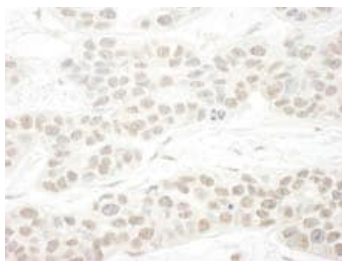
アプリケーションノートには、推奨の開始希釈率がありますが、適切な希釈率につきましてはご確認ください。

アプリケーション	Abreviews	特記事項
IHC-P		1/100 - 1/500. Epitope exposure is recommended. Epitope exposure with citrate buffer will enhance staining.

## ターゲット情報

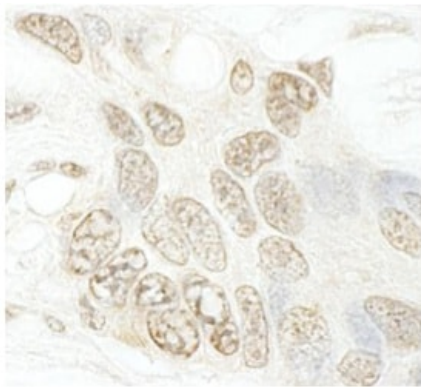
機能	Histone methyltransferase that specifically methylates 'Lys-4' of histone H3, when part of the SET1 histone methyltransferase (HMT) complex, but not if the neighboring 'Lys-9' residue is already methylated. H3 'Lys-4' methylation represents a specific tag for epigenetic transcriptional activation. The non-overlapping localization with SETD1A suggests that SETD1A and SETD1B make non-redundant contributions to the epigenetic control of chromatin structure and gene expression. Specifically tri-methylates 'Lys-4' of histone H3 in vitro.
配列類似性	Contains 1 post-SET domain. Contains 1 RRM (RNA recognition motif) domain. Contains 1 SET domain.
細胞内局在	Nucleus speckle. Chromosome. Localizes to a largely non-overlapping set of euchromatic nuclear speckles with SETD1A, suggesting that SETD1A and SET1B each bind to a unique set of target genes.

## 画像



Staining of Human SETD1B in a Formalin/PFA-fixed paraffin-embedded section of Human Breast Carcinoma using ab112049 at a dilution of 1/250.

Immunohistochemistry (Formalin/PFA-fixed paraffin-embedded sections) - Anti-SETD1B antibody (ab112049)



Immunohistochemistry (Formalin/PFA-fixed paraffin-embedded sections) - Anti-SETD1B antibody (ab112049)

Staining of Human SETD1B in a Formalin/PFA-fixed paraffin-embedded section of Human Ovarian Carcinoma using ab112049 at a dilution of 1/250.

**Please note:** All products are "FOR RESEARCH USE ONLY. NOT FOR USE IN DIAGNOSTIC PROCEDURES"

#### Our Abpromise to you: Quality guaranteed and expert technical support

---

- Replacement or refund for products not performing as stated on the datasheet
- Valid for 12 months from date of delivery
- Response to your inquiry within 24 hours
- We provide support in Chinese, English, French, German, Japanese and Spanish
- Extensive multi-media technical resources to help you
- We investigate all quality concerns to ensure our products perform to the highest standards

If the product does not perform as described on this datasheet, we will offer a refund or replacement. For full details of the Abpromise, please visit <https://www.abcam.co.jp/abpromise> or contact our technical team.

#### Terms and conditions

---

- Guarantee only valid for products bought direct from Abcam or one of our authorized distributors