

# Anti-Serum Response Factor SRF (phospho S103) antibody ab53130

**5 References** [画像数 2](#)

### 製品の概要

製品名	Anti-Serum Response Factor SRF (phospho S103) antibody
製品の詳細	Rabbit polyclonal to Serum Response Factor SRF (phospho S103)
由来種	Rabbit
アプリケーション	<b>適用あり:</b> WB, IHC-P
種交差性	<b>交差種:</b> Human
免疫原	Synthetic peptide corresponding to Human Serum Response Factor SRF aa 50-150 (phospho S103). Database link: <a href="#">P11831</a>
特記事項	<p>The Life Science industry has been in the grips of a reproducibility crisis for a number of years. Abcam is leading the way in addressing this with our range of recombinant monoclonal antibodies and knockout edited cell lines for gold-standard validation. Please check that this product meets your needs before purchasing.</p> <p>If you have any questions, special requirements or concerns, please send us an inquiry and/or contact our Support team ahead of purchase. Recommended alternatives for this product can be found below, along with publications, customer reviews and Q&amp;As</p>

### 製品の特性

製品の状態	Liquid
保存方法	Shipped at 4°C. Store at -20°C. Stable for 12 months at -20°C.
バッファー	<p>pH: 7.40</p> <p>Preservative: 0.02% Sodium azide</p> <p>Constituents: 50% Glycerol (glycerin, glycerine), 0.87% Sodium chloride, PBS</p> <p>Without Mg+2 and Ca+2</p>
精製度	Immunogen affinity purified
特記事項(精製)	ab53130 was affinity purified from rabbit antiserum by affinity chromatography using epitope specific phosphopeptide. The antibody against non phosphopeptide was removed by chromatography using non phosphopeptide corresponding to the phosphorylation site.
ポリ/モノ	ポリクローナル

## アプリケーション

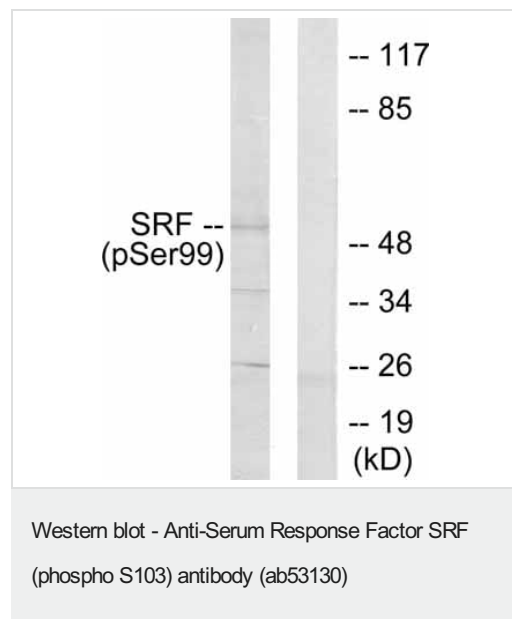
**The Abpromise guarantee** Abpromise保証は、次のテスト済みアプリケーションにおけるab53130の使用に適用されます  
アプリケーションノートには、推奨の開始希釈率がありますが、適切な希釈率につきましてはご確認ください。

アプリケーション	Abreviews	特記事項
WB		1/300 - 1/1000. Detects a band of approximately 55 kDa (predicted molecular weight: 52 kDa).
IHC-P		Use at an assay dependent concentration.

## ターゲット情報

機能	SRF is a transcription factor that binds to the serum response element (SRE), a short sequence of dyad symmetry located 300 bp to the 5' of the site of transcription initiation of some genes (such as FOS). Required for cardiac differentiation and maturation.
配列類似性	Contains 1 MADS-box domain.
翻訳後修飾	Phosphorylated by PRKDC.
細胞内局在	Nucleus.

## 画像



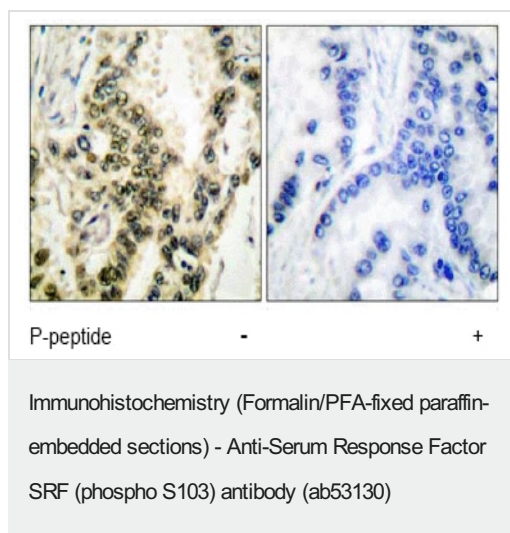
**All lanes :** Anti-Serum Response Factor SRF (phospho S103) antibody (ab53130) at 1/300 dilution

**Lane 1 :** LOVO cell extract treated with serum (20%, 15mins)

**Lane 2 :** LOVO cell extract treated with serum (20%, 15mins) with immunising peptide

**Predicted band size:** 52 kDa

**Observed band size:** 55 kDa



ab53130 at 1/50 dilution staining Serum Response Factor SRF in human lung carcinoma by Immunohistochemistry, Paraffin embedded tissue, in the absence and presence of the immunising peptide.

**Please note:** All products are "FOR RESEARCH USE ONLY. NOT FOR USE IN DIAGNOSTIC PROCEDURES"

### Our Abpromise to you: Quality guaranteed and expert technical support

---

- Replacement or refund for products not performing as stated on the datasheet
- Valid for 12 months from date of delivery
- Response to your inquiry within 24 hours
- We provide support in Chinese, English, French, German, Japanese and Spanish
- Extensive multi-media technical resources to help you
- We investigate all quality concerns to ensure our products perform to the highest standards

If the product does not perform as described on this datasheet, we will offer a refund or replacement. For full details of the Abpromise, please visit <https://www.abcam.co.jp/abpromise> or contact our technical team.

### Terms and conditions

---

- Guarantee only valid for products bought direct from Abcam or one of our authorized distributors