

Anti-Serum Response Factor SRF antibody ab53147

[13 References](#) [画像数 2](#)

製品の概要

| | |
|----------|---|
| 製品名 | Anti-Serum Response Factor SRF antibody |
| 製品の詳細 | Rabbit polyclonal to Serum Response Factor SRF |
| 由来種 | Rabbit |
| アプリケーション | 適用あり: WB, IHC-P |
| 種交差性 | 交差種: Mouse, Human |
| 免疫原 | Synthetic non phosphopeptide derived from human Serum Response Factor SRF around the phosphorylation site of serine 99 (S-L-S-E-M). |
| 特記事項 | <p>The Life Science industry has been in the grips of a reproducibility crisis for a number of years. Abcam is leading the way in addressing this with our range of recombinant monoclonal antibodies and knockout edited cell lines for gold-standard validation. Please check that this product meets your needs before purchasing.</p> <p>If you have any questions, special requirements or concerns, please send us an inquiry and/or contact our Support team ahead of purchase. Recommended alternatives for this product can be found below, along with publications, customer reviews and Q&As</p> |

製品の特性

| | |
|----------|--|
| 製品の状態 | Liquid |
| 保存方法 | Shipped at 4°C. Store at -20°C. Stable for 12 months at -20°C. |
| バッファー | pH: 7.40 Preservative: 0.02% Sodium azide Constituents: 50% Glycerol (glycerin, glycerine), 0.87% Sodium chloride, PBS |
| 精製度 | Without Mg+2 and Ca+2 Immunogen affinity purified |
| 特記事項(精製) | ab53147 was affinity purified from rabbit antiserum by affinity chromatography using epitope specific immunogen. |
| ポリ/モノ | ポリクローナル |
| アイソタイプ | IgG |

アプリケーション

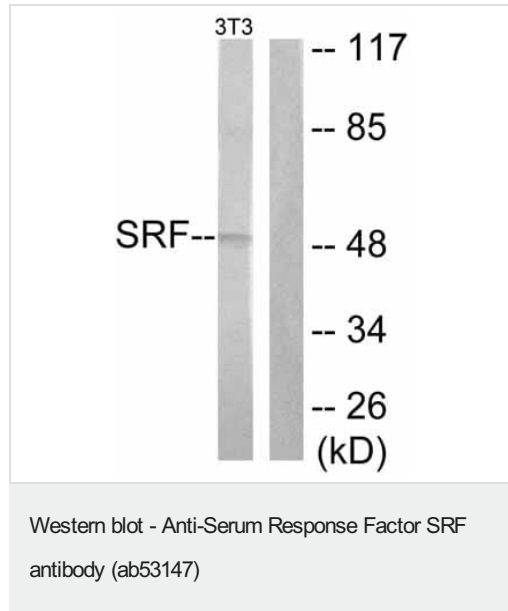
The Abpromise guarantee **Abpromise保証は、次のテスト済みアプリケーションにおけるab53147の使用に適用されず**
アプリケーションノートには、推奨の開始希釈率がありますが、適切な希釈率につきましてはご検討ください。

| アプリケーション | Abreviews | 特記事項 |
|----------|-----------|--|
| WB | | 1/300 - 1/1000. Detects a band of approximately 62 kDa (predicted molecular weight: 52 kDa). |
| IHC-P | | Use at an assay dependent concentration. |

ターゲット情報

| | |
|-------|--|
| 機能 | SRF is a transcription factor that binds to the serum response element (SRE), a short sequence of dyad symmetry located 300 bp to the 5' of the site of transcription initiation of some genes (such as FOS). Required for cardiac differentiation and maturation. |
| 配列類似性 | Contains 1 MADS-box domain. |
| 翻訳後修飾 | Phosphorylated by PRKDC. |
| 細胞内局在 | Nucleus. |

画像



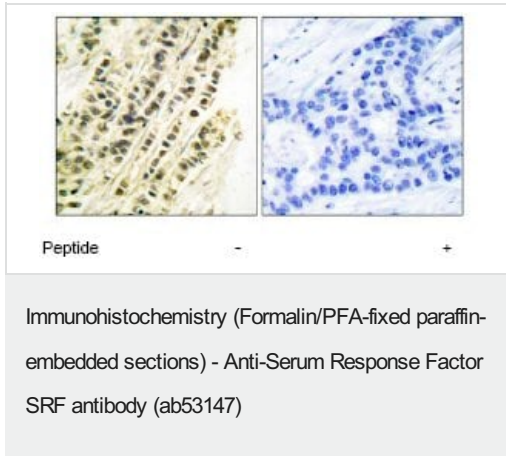
All lanes : Anti-Serum Response Factor SRF antibody (ab53147) at 1/300 dilution

Lane 1 : Extracts of NIH/3T3 cells treated with PMA (125ng/ml, 30 min) with no peptide

Lane 2 : Extracts of NIH/3T3 cells treated with PMA (125ng/ml, 30 min) with peptide

Predicted band size: 52 kDa

Observed band size: 50 kDa



Immunohistochemical analysis of Serum Response Factor SRF in paraffin embedded human breast carcinoma tissue using ab53147 at a dilution of 1/50. Right hand image: treated with immunising peptide. Left hand image: untreated.

Please note: All products are "FOR RESEARCH USE ONLY. NOT FOR USE IN DIAGNOSTIC PROCEDURES"

Our Abpromise to you: Quality guaranteed and expert technical support

- Replacement or refund for products not performing as stated on the datasheet
- Valid for 12 months from date of delivery
- Response to your inquiry within 24 hours
- We provide support in Chinese, English, French, German, Japanese and Spanish
- Extensive multi-media technical resources to help you
- We investigate all quality concerns to ensure our products perform to the highest standards

If the product does not perform as described on this datasheet, we will offer a refund or replacement. For full details of the Abpromise, please visit <https://www.abcam.co.jp/abpromise> or contact our technical team.

Terms and conditions

- Guarantee only valid for products bought direct from Abcam or one of our authorized distributors