

Anti-SerpinB6/CAP antibody ab97330

1 References 画像数 1

医薬用外劇物

製品の概要

製品名	Anti-SerpinB6/CAP antibody
製品の詳細	Rabbit polyclonal to SerpinB6/CAP
由来種	Rabbit
アプリケーション	適用あり: WB
種交差性	交差種: Human
免疫原	Recombinant fragment corresponding to Human SerpinB6/CAP aa 66-283.
ポジティブ・コントロール	A549 and HeLa whole cell lysates; HepG2 and HCT116 cell lysates
特記事項	<p>The Life Science industry has been in the grips of a reproducibility crisis for a number of years. Abcam is leading the way in addressing this with our range of recombinant monoclonal antibodies and knockout edited cell lines for gold-standard validation. Please check that this product meets your needs before purchasing.</p> <p>If you have any questions, special requirements or concerns, please send us an inquiry and/or contact our Support team ahead of purchase. Recommended alternatives for this product can be found below, along with publications, customer reviews and Q&amp;As</p>

製品の特性

製品の状態	Liquid
保存方法	Shipped at 4°C. Upon delivery aliquot. Store at -20°C or -80°C. Avoid freeze / thaw cycle.
バッファー	pH: 7.00 Preservative: 0.01% Thimerosal (merthiolate) Constituents: 1.21% Tris, 0.75% Glycine, 20% Glycerol (glycerin, glycerine)
精製度	Immunogen affinity purified
ポリ/モノ	ポリクローナル
アイソタイプ	IgG

アプリケーション

The Abpromise guarantee      Abpromise保証は、次のテスト済みアプリケーションにおけるab97330の使用に適用されます

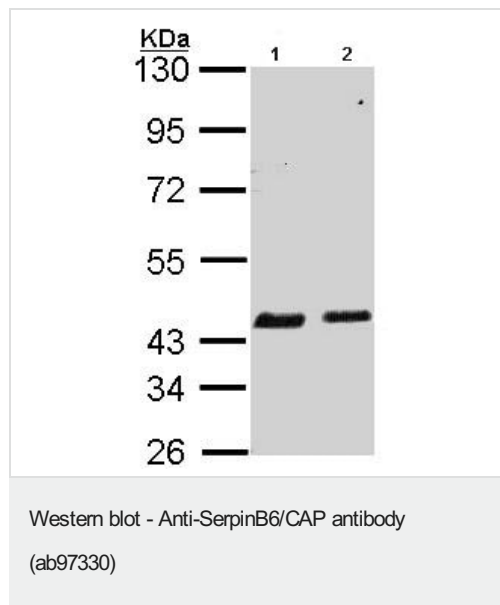
アプリケーションノートには、推奨の開始希釈率がありますが、適切な希釈率につきましてはご確認ください。

アプリケーション	Abreviews	特記事項
WB		1/500 - 1/3000. Predicted molecular weight: 42 kDa.

## ターゲット情報

機能	May be involved in the regulation of serine proteinases present in the brain or extravasated from the blood (By similarity). Inhibitor of cathepsin G, kallikrein-8 and thrombin. May play an important role in the inner ear in the protection against leakage of lysosomal content during stress and loss of this protection results in cell death and sensorineural hearing loss.
組織特異性	Expressed in keratinocytes (at protein level). Highest levels in skeletal muscle. Also found in placenta, cardiac muscle, lung, liver, kidney and pancreas. Expressed in the inner ear hair cells. Expressed abundantly by normal mast cells in different tissues and by mast cells in mastocytoma lesions.
関連疾患	Defects in SERPINB6 are the cause of deafness autosomal recessive type 91 (DFNB91) [MIM:613453]. It is a form of non-syndromic deafness characterized by progressive and age-dependent sensorineural hearing loss. Vestibular function is normal.
配列類似性	Belongs to the serpin family. Ov-serpin subfamily.
細胞内局在	Cytoplasm.

## 画像



**All lanes :** Anti-SerpinB6/CAP antibody (ab97330) at 1/1000 dilution

**Lane 1 :** A549 whole cell lysate

**Lane 2 :** HeLa whole cell lysate

Lysates/proteins at 30 µg per lane.

**Predicted band size:** 42 kDa

10% SDS-PAGE

**Please note:** All products are "FOR RESEARCH USE ONLY. NOT FOR USE IN DIAGNOSTIC PROCEDURES"

## Our Abpromise to you: Quality guaranteed and expert technical support

- Replacement or refund for products not performing as stated on the datasheet
- Valid for 12 months from date of delivery

- Response to your inquiry within 24 hours
- We provide support in Chinese, English, French, German, Japanese and Spanish
- Extensive multi-media technical resources to help you
- We investigate all quality concerns to ensure our products perform to the highest standards

If the product does not perform as described on this datasheet, we will offer a refund or replacement. For full details of the Abpromise, please visit <https://www.abcam.co.jp/abpromise> or contact our technical team.

#### **Terms and conditions**

---

- Guarantee only valid for products bought direct from Abcam or one of our authorized distributors