

Anti-SERPINB1/PI2 antibody ab47731

5 References [画像数 2](#)

製品の概要

製品名	Anti-SERPINB1/PI2 antibody
製品の詳細	Rabbit polyclonal to SERPINB1/PI2
由来種	Rabbit
特異性	This antibody is specific for SERPINB1/PI2.
アプリケーション	適用あり: WB, IHC-P
種交差性	交差種: Human
免疫原	Synthetic peptide corresponding to Human SERPINB1/PI2 (N terminal).
特記事項	<p>The Life Science industry has been in the grips of a reproducibility crisis for a number of years. Abcam is leading the way in addressing this with our range of recombinant monoclonal antibodies and knockout edited cell lines for gold-standard validation. Please check that this product meets your needs before purchasing.</p> <p>If you have any questions, special requirements or concerns, please send us an inquiry and/or contact our Support team ahead of purchase. Recommended alternatives for this product can be found below, along with publications, customer reviews and Q&As</p>

製品の特性

製品の状態	Liquid
保存方法	Shipped at 4°C. Upon delivery aliquot and store at -20°C. Avoid freeze / thaw cycles.
バッファー	Preservative: 0.05% Sodium azide Constituent: 50% Glycerol
精製度	Immunogen affinity purified
ポリ/モノ	ポリクローナル
アイソタイプ	IgG

アプリケーション

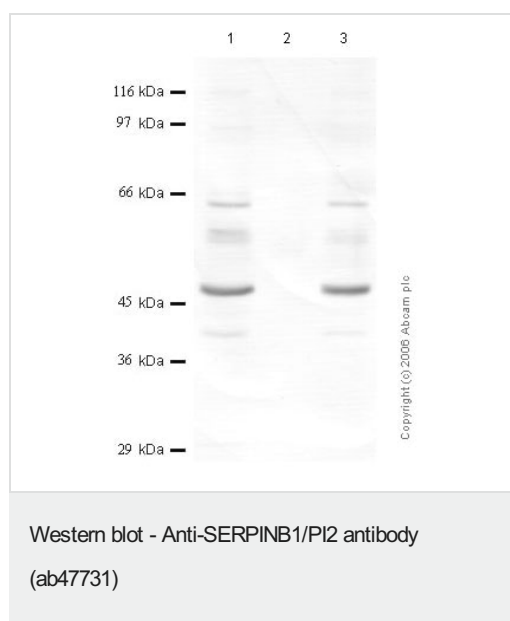
The Abpromise guarantee **Abpromise保証は、次のテスト済みアプリケーションにおけるab47731の使用に適用されます**
 アプリケーションノートには、推奨の開始希釈率がありますが、適切な希釈率につきましてはご検討ください。

アプリケーション	Abreviews	特記事項
WB		1/1000 - 1/5000. Detects a band of approximately 47 kDa (predicted molecular weight: 43 kDa).
IHC-P		Use at an assay dependent concentration.

ターゲット情報

機能	Regulates the activity of the neutrophil proteases elastase, cathepsin G, proteinase-3, chymase, chymotrypsin, and kallikrein-3.
配列類似性	Belongs to the serpin family. Ov-serpin subfamily.
ドメイン	Reactive bond 1 is specific for reaction with chymotrypsin-like protease such as cathepsin G, chymotrypsin or chymase, while reactive bond 2 is specific for reaction with elastase-like protease such as neutrophil elastase, proteinase-3, pancreatic elastase or PSA.
細胞内局在	Cytoplasm.

画像



All lanes : Anti-SERPINB1/PI2 antibody (ab47731) at 1/1000 dilution

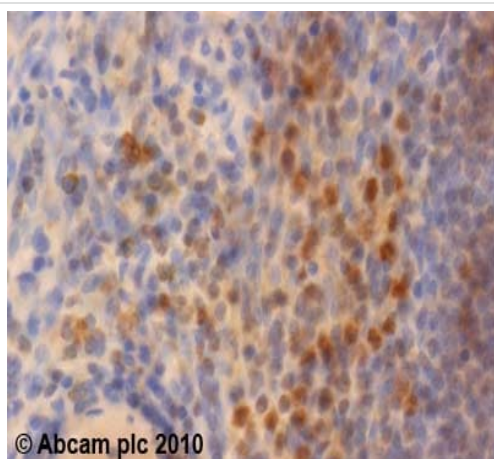
All lanes : MH-S cell lysate

Lysates/proteins at 20 µl per lane.

Predicted band size: 43 kDa

Observed band size: 47 kDa

Additional bands at: 65 kDa (possible degradation product)



Immunohistochemistry (Formalin/PFA-fixed paraffin-embedded sections) - Anti-SERPINB1/PI2 antibody (ab47731)

ab47731 (2µg/ml) staining Serpin B1 in human spleen using an automated system (DAKO Autostainer Plus). Using this protocol there is cytoplasmic staining in both red and white pulp. Sections were rehydrated and antigen retrieved with the Dako 3 in 1 AR buffer citrate pH 6.0 in a DAKO PT link. Slides were peroxidase blocked in 3% H₂O₂ in methanol for 10 mins. They were then blocked with Dako Protein block for 10 minutes (containing casein 0.25% in PBS) then incubated with primary antibody for 20 min and detected with Dako Envision Flex amplification kit for 30 minutes. Colorimetric detection was completed with Diaminobenzidine for 5 minutes. Slides were counterstained with Haematoxylin and coverslipped under DePeX. Please note that, for manual staining, optimization of primary antibody concentration and incubation time is recommended. Signal amplification may be required.

Please note: All products are "FOR RESEARCH USE ONLY. NOT FOR USE IN DIAGNOSTIC PROCEDURES"

Our Abpromise to you: Quality guaranteed and expert technical support

- Replacement or refund for products not performing as stated on the datasheet
- Valid for 12 months from date of delivery
- Response to your inquiry within 24 hours
- We provide support in Chinese, English, French, German, Japanese and Spanish
- Extensive multi-media technical resources to help you
- We investigate all quality concerns to ensure our products perform to the highest standards

If the product does not perform as described on this datasheet, we will offer a refund or replacement. For full details of the Abpromise, please visit <https://www.abcam.co.jp/abpromise> or contact our technical team.

Terms and conditions

- Guarantee only valid for products bought direct from Abcam or one of our authorized distributors