

Anti-Serotonin transporter antibody ab102048

★★★★★ [1 Abreviews](#) [5 References](#) [画像数 2](#)

製品の概要

製品名	Anti-Serotonin transporter antibody
製品の詳細	Rabbit polyclonal to Serotonin transporter
由来種	Rabbit
アプリケーション	適用あり: WB
種交差性	交差種: Mouse, Human
免疫原	Recombinant full length protein, corresponding to amino acids 1-630 of Human Serotonin transporter (AAH69484.1).
ポジティブ・コントロール	Mouse lung lysate. Transfected 293T cell line.
特記事項	<p>The Life Science industry has been in the grips of a reproducibility crisis for a number of years. Abcam is leading the way in addressing this with our range of recombinant monoclonal antibodies and knockout edited cell lines for gold-standard validation. Please check that this product meets your needs before purchasing.</p> <p>If you have any questions, special requirements or concerns, please send us an inquiry and/or contact our Support team ahead of purchase. Recommended alternatives for this product can be found below, along with publications, customer reviews and Q&As</p>

製品の特性

製品の状態	Liquid
保存方法	Shipped at 4°C. Upon delivery aliquot. Store at -20°C or -80°C. Avoid freeze / thaw cycle.
バッファー	pH: 7.4 Constituent: PBS
精製度	Protein A purified
ポリ/モノ	ポリクローナル
アイソタイプ	IgG

アプリケーション

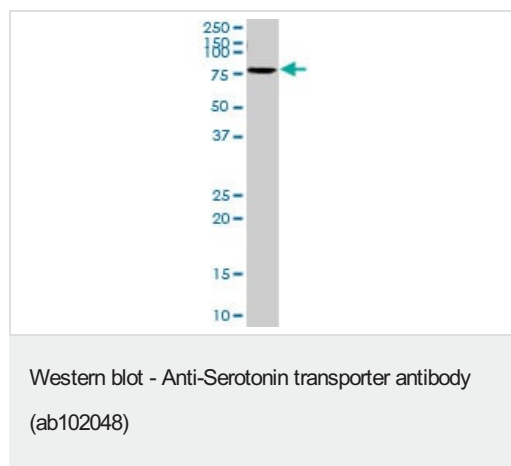
The Abpromise guarantee **Abpromise保証は、** 次のテスト済みアプリケーションにおけるab102048の使用に適用されます
アプリケーションノートには、推奨の開始希釈率がありますが、適切な希釈率につきましてはご検討ください。

アプリケーション	Abreviews	特記事項
WB		1/500 - 1/1000. Predicted molecular weight: 71 kDa.

ターゲット情報

機能	Serotonin transporter whose primary function in the central nervous system involves the regulation of serotonergic signaling via transport of serotonin molecules from the synaptic cleft back into the pre-synaptic terminal for re-utilization. Plays a key role in mediating regulation of the availability of serotonin to other receptors of serotonergic systems. Terminates the action of serotonin and recycles it in a sodium-dependent manner.
組織特異性	Expressed in platelets (at protein level).
配列類似性	Belongs to the sodium:neurotransmitter symporter (SNF) (TC 2.A.22) family. SLC6A4 subfamily.
翻訳後修飾	Glycosylated; modification with sialylated N-glycans is a requirement for transporters to associate with each other and to function as homooligomeric forms. Phosphorylated at Ser-611, Thr-613 and Thr-616.
細胞内局在	Cell membrane. Endomembrane system. Endosome membrane. Translocates from intracellular locations to the plasma membrane. Density of transporter molecules on the plasma membrane is itself regulated by serotonin.

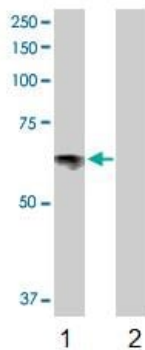
画像



Anti-Serotonin transporter antibody (ab102048) at 1/500 dilution +
Mouse lung tissue lysate at 50 µg

Developed using the ECL technique.

Predicted band size: 71 kDa



Western blot - Anti-Serotonin transporter antibody (ab102048)

All lanes : Anti-Serotonin transporter antibody (ab102048) at 1/500 dilution

Lane 1 : Serotonin transporter transfected lysate from 293T cell line

Lane 2 : Non transfected lysate from 293T cell line

Lysates/proteins at 25 µg per lane.

Developed using the ECL technique.

Predicted band size: 71 kDa

Observed band size: 70.3 kDa

Please note: All products are "FOR RESEARCH USE ONLY. NOT FOR USE IN DIAGNOSTIC PROCEDURES"

Our Abpromise to you: Quality guaranteed and expert technical support

- Replacement or refund for products not performing as stated on the datasheet
- Valid for 12 months from date of delivery
- Response to your inquiry within 24 hours
- We provide support in Chinese, English, French, German, Japanese and Spanish
- Extensive multi-media technical resources to help you
- We investigate all quality concerns to ensure our products perform to the highest standards

If the product does not perform as described on this datasheet, we will offer a refund or replacement. For full details of the Abpromise, please visit <https://www.abcam.co.jp/abpromise> or contact our technical team.

Terms and conditions

- Guarantee only valid for products bought direct from Abcam or one of our authorized distributors