


Anti-SERINC3 antibody ab65218

1 [References](#) **2** [画像数](#)

製品の概要

製品名	Anti-SERINC3 antibody
製品の詳細	Rabbit polyclonal to SERINC3
由来種	Rabbit
アプリケーション	適用あり: ICC/IF, WB
種交差性	交差種: Human 交差が予測される動物種: Mouse, Rat 
免疫原	Synthetic peptide. This information is proprietary to Abcam and/or its suppliers.
ポジティブ・コントロール	WB: 293 cell extracts. IF: HepG2 cells.
特記事項	<p>The Life Science industry has been in the grips of a reproducibility crisis for a number of years. Abcam is leading the way in addressing this with our range of recombinant monoclonal antibodies and knockout edited cell lines for gold-standard validation. Please check that this product meets your needs before purchasing.</p> <p>If you have any questions, special requirements or concerns, please send us an inquiry and/or contact our Support team ahead of purchase. Recommended alternatives for this product can be found below, along with publications, customer reviews and Q&As</p>

製品の特性

製品の状態	Liquid
保存方法	Shipped at 4°C. Store at -20°C. Stable for 12 months at -20°C.
バッファー	<p>pH: 7.40</p> <p>Preservative: 0.02% Sodium azide</p> <p>Constituents: PBS, 50% Glycerol (glycerin, glycerine), 0.87% Sodium chloride</p> <p>Without Mg2+ and Ca2+</p>
精製度	Immunogen affinity purified
特記事項 (精製)	ab65218 was affinity purified from rabbit antiserum by affinity chromatography using epitope specific immunogen.
ポリ/モノ	ポリクローナル
アイソタイプ	IgG

アプリケーション

The Abpromise guarantee **Abpromise保証は、** 次のテスト済みアプリケーションにおけるab65218の使用に適用されます
アプリケーションノートには、推奨の開始希釈率がありますが、適切な希釈率につきましてはご検討ください。

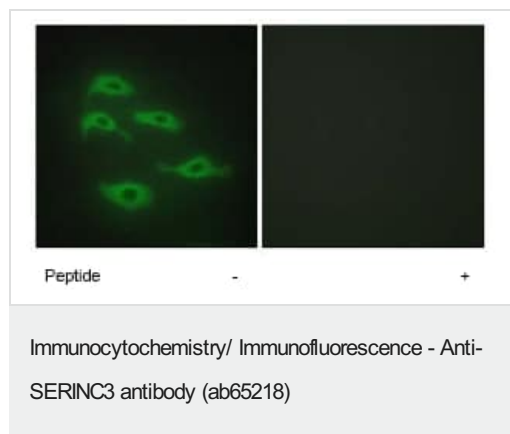
アプリケーション	Abreviews	特記事項
ICC/IF		1/500 - 1/1000.
WB		1/500 - 1/1000. Detects a band of approximately 53 kDa (predicted molecular weight: 53 kDa).

ターゲット情報

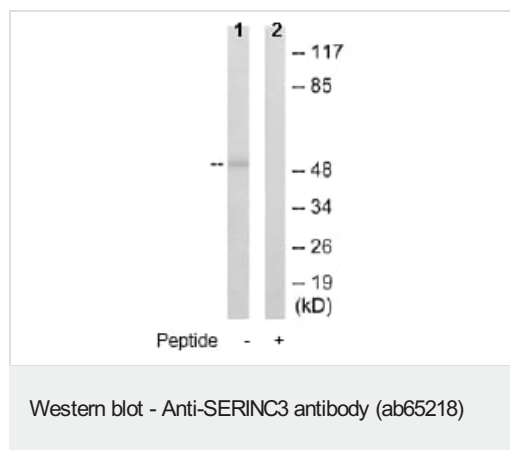
関連性 SERINC3 (serine incorporator 3) may be involved in cellular transformation.

細胞内局在 Cell membrane; Multi pass membrane protein

画像



ab65218, at a 1/500 dilution, staining SERINC3 in HepG2 cells by Immunofluorescence, in the absence or presence of the immunising peptide.



All lanes : Anti-SERINC3 antibody (ab65218) at 1/500 dilution

Lane 1 : 293 cell extract

Lane 2 : 293 cell extract with immunising peptide at 10 µg

Lysates/proteins at 5 µg per lane.

Predicted band size: 53 kDa

Observed band size: 53 kDa

Please note: All products are "FOR RESEARCH USE ONLY. NOT FOR USE IN DIAGNOSTIC PROCEDURES"

Our Abpromise to you: Quality guaranteed and expert technical support

- Replacement or refund for products not performing as stated on the datasheet
- Valid for 12 months from date of delivery
- Response to your inquiry within 24 hours

- We provide support in Chinese, English, French, German, Japanese and Spanish
- Extensive multi-media technical resources to help you
- We investigate all quality concerns to ensure our products perform to the highest standards

If the product does not perform as described on this datasheet, we will offer a refund or replacement. For full details of the Abpromise, please visit <https://www.abcam.co.jp/abpromise> or contact our technical team.

Terms and conditions

- Guarantee only valid for products bought direct from Abcam or one of our authorized distributors