


### Anti-SERCA2 ATPase antibody ab3625

★★★★★ 6 Abreviews 42 References 画像数 5

#### 製品の概要

製品名	Anti-SERCA2 ATPase antibody
製品の詳細	Rabbit polyclonal to SERCA2 ATPase
由来種	Rabbit
アプリケーション	適用あり: IP, WB, ICC/IF, IHC-P
種交差性	交差種: Mouse, Rat, Rabbit, Human, Pig 交差が予測される動物種: Chicken, Cat, Dog 
免疫原	Synthetic peptide within Human SERCA2 ATPase aa 250-550. The exact immunogen sequence used to generate this antibody is proprietary information. If additional detail on the immunogen is needed to determine the suitability of the antibody for your needs, please <b>contact</b> our Scientific Support team to discuss your requirements. NP_733765.1 (GeneID 488). Database link: <b>P16615</b>
ポジティブ・コントロール	WB: HeLa, HEK-293T, NIH/3T3 whole cell lysate. Pig and rabbit aorta homogenate. Rat aortic smooth muscle cell lysate. IHC-P: Human heart tissue. IP: SERCA2 ATPase IP in HEK-293T whole cell lysate. ICC/IF: HeLa cells.
特記事項	<p>The Life Science industry has been in the grips of a reproducibility crisis for a number of years. Abcam is leading the way in addressing this with our range of recombinant monoclonal antibodies and knockout edited cell lines for gold-standard validation. Please check that this product meets your needs before purchasing.</p> <p>If you have any questions, special requirements or concerns, please send us an inquiry and/or contact our Support team ahead of purchase. Recommended alternatives for this product can be found below, along with publications, customer reviews and Q&amp;As</p>

#### 製品の特性

製品の状態	Liquid
保存方法	Shipped at 4°C. Upon delivery aliquot and store at -20°C. Avoid freeze / thaw cycles.
バッファー	pH: 7 Preservative: 0.1% Sodium azide Constituents: 0.021% PBS, 1.764% Sodium citrate, 1.815% Tris
精製度	Immunogen affinity purified
ポリ/モノ	ポリクローナル

## アプリケーション

**The Abpromise guarantee** Abpromise保証は、次のテスト済みアプリケーションにおけるab3625の使用に適用されます  
アプリケーションノートには、推奨の開始希釈率がありますが、適切な希釈率につきましてはご検討ください。

アプリケーション	Abreviews	特記事項
IP	★★★★★ (1)	Use a concentration of 1 - 4 µg/ml.
WB	★★★★★ (3)	1/1000 - 1/5000. Predicted molecular weight: 115 kDa.
ICC/IF		Use a concentration of 1 µg/ml.
IHC-P	★★★★★ (2)	Use a concentration of 1 µg/ml. Perform heat mediated antigen retrieval before commencing with IHC staining protocol.

## ターゲット情報

## 機能

This magnesium-dependent enzyme catalyzes the hydrolysis of ATP coupled with the translocation of calcium from the cytosol to the sarcoplasmic reticulum lumen. Isoform 2 is involved in the regulation of the contraction/relaxation cycle.

## 組織特異性

Isoform 1 is widely expressed in smooth muscle and nonmuscle tissues such as in adult skin epidermis, with highest expression in liver, pancreas and lung, and intermediate expression in brain, kidney and placenta. Also expressed at lower levels in heart and skeletal muscle. Isoforms 2 and 3 are highly expressed in the heart and slow twitch skeletal muscle. Expression of isoform 3 is predominantly restricted to cardiomyocytes and in close proximity to the sarcolemma. Both isoforms are mildly expressed in lung, kidney, liver, pancreas and placenta. Expression of isoform 3 is amplified during monocytic differentiation and also observed in the fetal heart.

## 関連疾患

Defects in ATP2A2 are a cause of acrokeratosis verruciformis (AKV) [MIM:101900]; also known as Hopf disease. AKV is a localized disorder of keratinization, which is inherited as an autosomal dominant trait. Its onset is early in life with multiple flat-topped, flesh-colored papules on the hands and feet, punctate keratoses on the palms and soles, with varying degrees of nail involvement. The histopathology shows a distinctive pattern of epidermal features with hyperkeratosis, hypergranulosis, and acanthosis together with papillomatosis. These changes are frequently associated with circumscribed elevations of the epidermis that are said to resemble church spires. There are no features of dyskeratosis or acantholysis, the typical findings in lesions of Darier disease.

Defects in ATP2A2 are the cause of Darier disease (DD) [MIM:124200]; also known as Darier-White disease (DAR). DD is an autosomal dominantly inherited skin disorder characterized by loss of adhesion between epidermal cells (acantholysis) and abnormal keratinization. Patients with mild disease may have no more than a few scattered keratotic papules or subtle nail changes, whereas those with severe disease are handicapped by widespread malodorous keratotic plaques. In a few families, neuropsychiatric abnormalities such as mild mental retardation, schizophrenia, bipolar disorder and epilepsy have been reported. Stress, UV exposure, heat, sweat, friction, and oral contraception exacerbate disease symptoms. Prevalence has been estimated at 1 in 50000. Clinical variants of DD include hypertrophic, vesicobullous, hypopigmented, cornifying, zosteriform or linear, acute and comedonal subtypes. Comedonal

Darier disease (CDD) is characterized by the coexistence of acne-like comedonal lesions with typical Darier hyperkeratotic papules on light-exposed areas. At histopathologic level, CDD differs from classic DD in the prominent follicular involvement and the presence of greatly elongated dermal villi.

#### 配列類似性

Belongs to the cation transport ATPase (P-type) (TC 3.A.3) family. Type IIA subfamily.

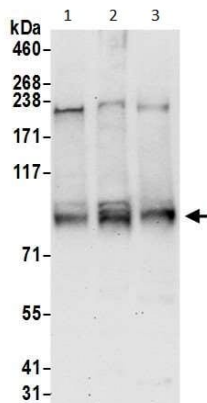
#### 翻訳後修飾

Nitrated under oxidative stress. Nitration on the two tyrosine residues inhibits catalytic activity.

#### 細胞内局在

Endoplasmic reticulum membrane. Sarcoplasmic reticulum membrane.

#### 画像



Western blot - Anti-SERCA2 ATPase antibody (ab3625)

**All lanes :** Anti-SERCA2 ATPase antibody (ab3625) at 0.1 µg/ml

**Lane 1 :** HeLa (human epithelial cell line from cervix adenocarcinoma) whole cell lysate

**Lane 2 :** HEK-293T (human epithelial cell line from embryonic kidney transformed with large T antigen) whole cell lysate

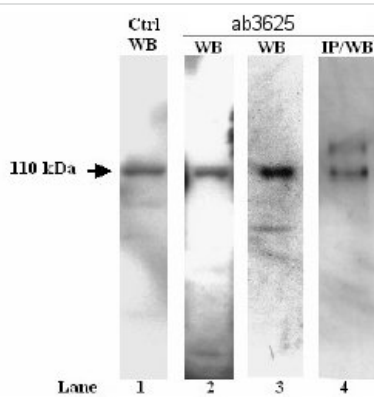
**Lane 3 :** NIH/3T3 (mouse embryo fibroblast cell line) whole cell lysate

Lysates/proteins at 50 µg per lane.

Developed using the ECL technique.

**Predicted band size:** 115 kDa

**Exposure time:** 30 seconds

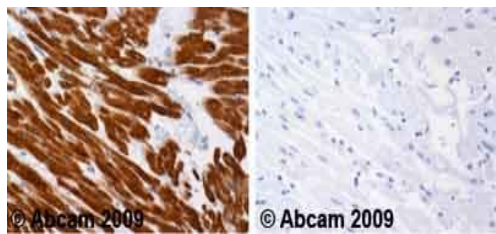


Western blot - Anti-SERCA2 ATPase antibody (ab3625)

Sample: Homogenate from Pig (lanes 1 and 2) or Rabbit (lane 4) aorta or lysate from cultured Rat aortic smooth muscle cells (lane 3)

Affinity purified Rabbit anti-SERCA2 (ab3625) (lanes 2, 3 and IP for lane 4) or control (ctrl) monoclonal anti-SERCA2 (lanes 1 and WB for lane 4).

Dilutions: 1:1,000 (lanes 1, 2 and 4) or 1:2,500 (lane 3)

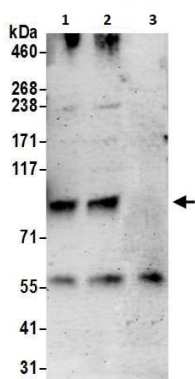


Immunohistochemistry (Formalin/PFA-fixed paraffin-embedded sections) - Anti-SERCA2 ATPase antibody (ab3625)

Ab3625 staining human heart. Staining is localised to the cytoplasm/sarcoplasm.

Left panel: with primary antibody at 1 µg/ml. Right panel: isotype control.

Sections were stained using an automated system DAKO Autostainer Plus, at room temperature. Sections were rehydrated and antigen retrieved with the DAKO 3-in-1 antigen retrieval buffer citrate pH 6.0 in a DAKO PT Link. Slides were peroxidase blocked in 3% H<sub>2</sub>O<sub>2</sub> in methanol for 10 minutes. They were then blocked with Dako Protein block for 10 minutes (containing casein 0.25% in PBS) then incubated with primary antibody for 20 minutes and detected with Dako Envision Flex amplification kit for 30 minutes. Colorimetric detection was completed with diaminobenzidine for 5 minutes. Slides were counterstained with Haematoxylin and coverslipped under DePeX. Please note that for manual staining we recommend to optimize the primary antibody concentration and incubation time (overnight incubation), and amplification may be required.



Immunoprecipitation - Anti-SERCA2 ATPase antibody (ab3625)

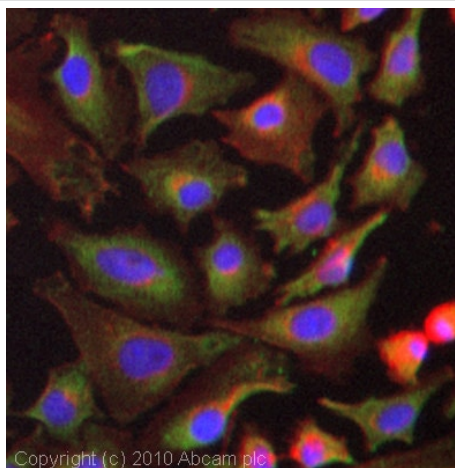
SERCA2 ATPase was immunoprecipitated from HEK-293T (human epithelial cell line from embryonic kidney transformed with large T antigen) whole cell lysate (1 mg for IP, 20% of IP loaded) with ab3625 at 6 µg/mg lysate. Western blot was performed from the immunoprecipitate using ab3625 at 1 µg/ml.

Lane 1: ab3625 IP in HEK-293T whole cell lysate.

Lane 3: ab3625 IP in HEK-293T whole cell lysate.

Lane 2: Control IgG IP in HEK-293T whole cell lysate.

Detection: Chemiluminescence with exposure time of 3 minutes.



Immunocytochemistry/ Immunofluorescence - Anti-SERCA2 ATPase antibody (ab3625)

ICC/IF image of ab3625 stained HeLa cells. The cells were 4% formaldehyde fixed (10 min) and then incubated in 1%BSA / 10% normal goat serum / 0.3M glycine in 0.1% PBS-Tween for 1h to permeabilise the cells and block non-specific protein-protein interactions. The cells were then incubated with the antibody (ab3625, 1µg/ml) overnight at +4°C. The secondary antibody (green) was Alexa Fluor® 488 goat anti-rabbit IgG (H+L) used at a 1/1000 dilution for 1h. Alexa Fluor® 594 WGA was used to label plasma membranes (red) at a 1/200 dilution for 1h. DAPI was used to stain the cell nuclei (blue) at a concentration of 1.43µM.

**Please note:** All products are "FOR RESEARCH USE ONLY. NOT FOR USE IN DIAGNOSTIC PROCEDURES"

### Our Abpromise to you: Quality guaranteed and expert technical support

- Replacement or refund for products not performing as stated on the datasheet
- Valid for 12 months from date of delivery
- Response to your inquiry within 24 hours
- We provide support in Chinese, English, French, German, Japanese and Spanish
- Extensive multi-media technical resources to help you
- We investigate all quality concerns to ensure our products perform to the highest standards

If the product does not perform as described on this datasheet, we will offer a refund or replacement. For full details of the Abpromise, please visit <https://www.abcam.co.jp/abpromise> or contact our technical team.

### Terms and conditions

- Guarantee only valid for products bought direct from Abcam or one of our authorized distributors