


# Anti-Separase antibody ab52158

**1** [References](#) **2** [画像数](#)

### 製品の概要

製品名	Anti-Separase antibody
製品の詳細	Rabbit polyclonal to Separase
由来種	Rabbit
アプリケーション	<b>適用あり:</b> IHC-P, WB
種交差性	<b>交差種:</b> Human <b>交差が予測される動物種:</b> Mouse 
免疫原	Synthetic non-phosphopeptide derived from human Separase around the phosphorylation site of serine 801 (N-S-S-P-V).
ポジティブ・コントロール	human colon carcinoma, extracts from A431 cells
特記事項	<p>The Life Science industry has been in the grips of a reproducibility crisis for a number of years. Abcam is leading the way in addressing this with our range of recombinant monoclonal antibodies and knockout edited cell lines for gold-standard validation. Please check that this product meets your needs before purchasing.</p> <p>If you have any questions, special requirements or concerns, please send us an inquiry and/or contact our Support team ahead of purchase. Recommended alternatives for this product can be found below, along with publications, customer reviews and Q&amp;As</p>

### 製品の特性

製品の状態	Liquid
保存方法	Shipped at 4°C. Upon delivery aliquot and store at -20°C. Avoid freeze / thaw cycles.
バッファー	pH: 7.40 Preservative: 0.02% Sodium azide Constituents: PBS, 50% Glycerol (glycerin, glycerine), 0.87% Sodium chloride
精製度	Immunogen affinity purified
ポリ/モノ	ポリクローナル
アイソタイプ	IgG

### アプリケーション

## The Abpromise guarantee

**Abpromise保証は、次のテスト済みアプリケーションにおけるab52158の使用に適用されます**

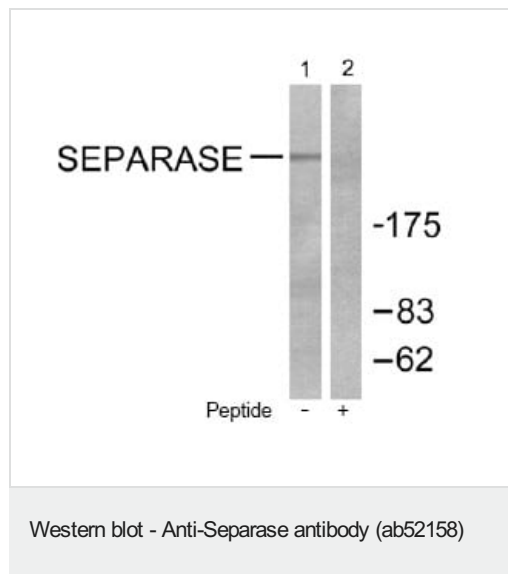
アプリケーションノートには、推奨の開始希釈率がありますが、適切な希釈率につきましてはご検討ください。

アプリケーション	Abreviews	特記事項
IHC-P		Use at an assay dependent concentration.
WB		1/500 - 1/1000. Detects a band of approximately >175 kDa (predicted molecular weight: 233 kDa).

## ターゲット情報

機能	Caspase-like protease, which plays a central role in the chromosome segregation by cleaving the SCC1/RAD21 subunit of the cohesin complex at the onset of anaphase. During most of the cell cycle, it is inactivated by different mechanisms.
配列類似性	Belongs to the peptidase C50 family.
翻訳後修飾	Autocleaves. This function, which is not essential for its protease activity, is unknown. Phosphorylated by CDK1. There are 8 Ser/Thr phosphorylation sites. Among them, Ser-1126 phosphorylation is the major site, which conducts to the enzyme inactivation.
細胞内局在	Cytoplasm. Nucleus.

## 画像



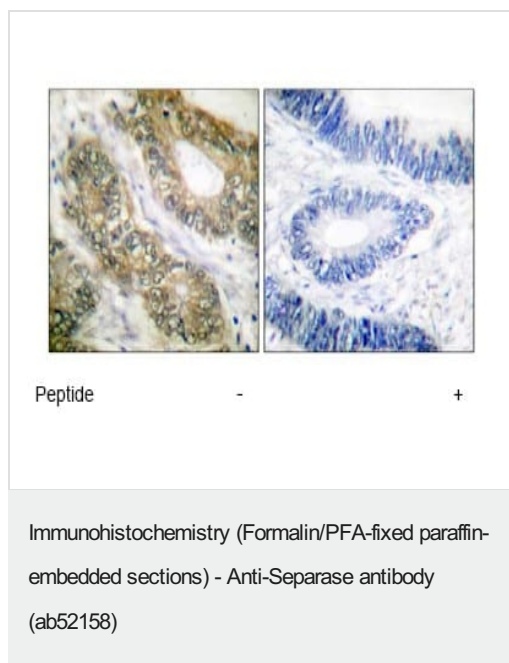
**All lanes :** Anti-Separase antibody (ab52158) at 1/500 dilution

**Lane 1 :** extracts from A431 cells

**Lane 2 :** extracts from A431 cells, with immunizing peptide

**Predicted band size:** 233 kDa

**Observed band size:** 233 kDa



Immunohistochemical analysis of separase expression in paraffin embedded human colon carcinoma tissue using ab52158 (1:50 dilution). Left: sample untreated. Right: sample treated with immunizing peptide (negative control).

**Please note:** All products are "FOR RESEARCH USE ONLY. NOT FOR USE IN DIAGNOSTIC PROCEDURES"

### Our Abpromise to you: Quality guaranteed and expert technical support

- Replacement or refund for products not performing as stated on the datasheet
- Valid for 12 months from date of delivery
- Response to your inquiry within 24 hours
- We provide support in Chinese, English, French, German, Japanese and Spanish
- Extensive multi-media technical resources to help you
- We investigate all quality concerns to ensure our products perform to the highest standards

If the product does not perform as described on this datasheet, we will offer a refund or replacement. For full details of the Abpromise, please visit <https://www.abcam.co.jp/abpromise> or contact our technical team.

### Terms and conditions

- Guarantee only valid for products bought direct from Abcam or one of our authorized distributors