


Anti-SEP15 antibody [NCIR128A] ab124840

リコンビナント RabMAb

★★★★☆ **1 Abreviews** **8 References** 画像数 4

製品の概要

製品名	Anti-SEP15 antibody [NCIR128A]
製品の詳細	Rabbit monoclonal [NCIR128A] to SEP15
由来種	Rabbit
アプリケーション	適用あり: WB
種交差性	交差種: Rat, Human 交差が予測される動物種: Mouse 
免疫原	Synthetic peptide corresponding to Mouse SEP15.
ポジティブ・コントロール	WB: Rat liver, fetal liver, human testis, mouse testis, rat testis and LnCaP lysates; 293T transfected with N-terminal tagged human SEP15 expression vectors whole cell lysate; Human SEP15 full length recombinant protein.
特記事項	<p>This antibody was developed as part of a collaboration between Epitomics, the National Cancer Institute's Center for Cancer Research and the lab of Dolph Hatfield. <u>View antibodies from NCI Center for Cancer Research Collaboration.</u></p> <p>This product is a recombinant monoclonal antibody, which offers several advantages including:</p> <ul style="list-style-type: none">- High batch-to-batch consistency and reproducibility- Improved sensitivity and specificity- Long-term security of supply- Animal-free production <p>For more information <u>see here.</u></p> <p>Our RabMAb[®] technology is a patented hybridoma-based technology for making rabbit monoclonal antibodies. For details on our patents, please refer to <u>RabMAb[®] patents.</u></p>

製品の特性

製品の状態	Liquid
保存方法	Shipped at 4°C. Store at +4°C short term (1-2 weeks). Upon delivery aliquot. Store at -20°C long term. Avoid freeze / thaw cycle.
バッファー	pH: 7.20 Preservative: 0.01% Sodium azide Constituents: 40% Glycerol (glycerin, glycerine), 0.05% BSA, 59% PBS

精製度	Protein A purified
ポリ/モノ	モノクローナル
クローン名	NCIR128A
アイソタイプ	IgG

アプリケーション

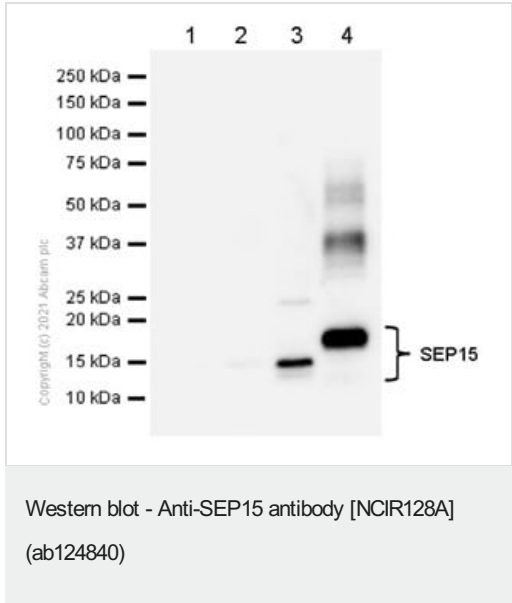
The Abpromise guarantee **Abpromise保証は、次のテスト済みアプリケーションにおけるab124840の使用に適用されます**
 アプリケーションノートには、推奨の開始希釈率がありますが、適切な希釈率につきましてはご確認ください。

アプリケーション	Abreviews	特記事項
WB	★★★★★ (1)	1/1000 - 1/10000. Predicted molecular weight: 18 kDa. C-terminal tagged SEP15 expression vectors might be not recognized by ab124840.

ターゲット情報

機能	May be involved in redox reactions associated with the formation of disulfide bonds. May contribute to the quality control of protein folding in the endoplasmic reticulum.
組織特異性	Higher levels in prostate and thyroid gland.
配列類似性	Belongs to the selenoprotein M/SEP15 family.
翻訳後修飾	The N-terminus is blocked.
細胞内局在	Endoplasmic reticulum lumen. The association with UGGT1/UGCG1 is essential for its retention in the endoplasmic reticulum.

画像



All lanes : Anti-SEP15 antibody [NCIR128A] (ab124840) at 1/1000 dilution

Lane 1 : 293T transfected with C-terminal tagged human SEP15 expression vectors, whole cell lysate at 15 µg

Lane 2 : 293T (Human embryonic kidney epithelial cell) transfected with an empty vector (vector control), whole cell lysate at 15 µg

Lane 3 : 293T transfected with N-terminal tagged human SEP15 expression vectors, whole cell lysate at 15 µg

Lane 4 : Human SEP15 full length recombinant protein

Secondary

All lanes : Goat Anti-Rabbit IgG H&L (HRP) ([ab97051](#)) at 1/20000 dilution

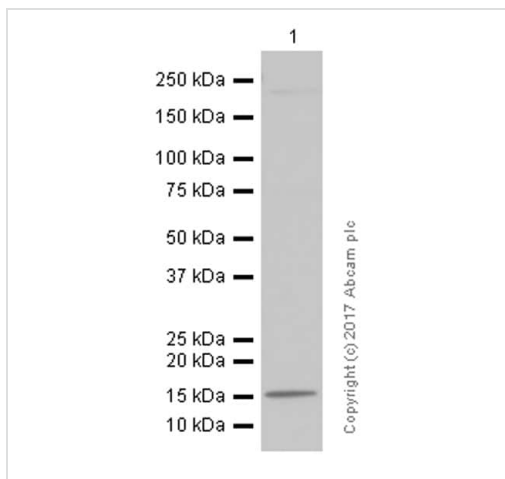
Predicted band size: 18 kDa

Observed band size: 18 kDa

Exposure time: 3 seconds

Blocking/Dilution buffer: 5% NFDM/TBST

C-terminal tagged SEP15 expression vectors might be not recognized by ab124840.



Western blot - Anti-SEP15 antibody [NCIR128A]
(ab124840)

Anti-SEP15 antibody [NCIR128A] (ab124840) at 1/1000 dilution
(purified) + Human testis lysate at 15 µg

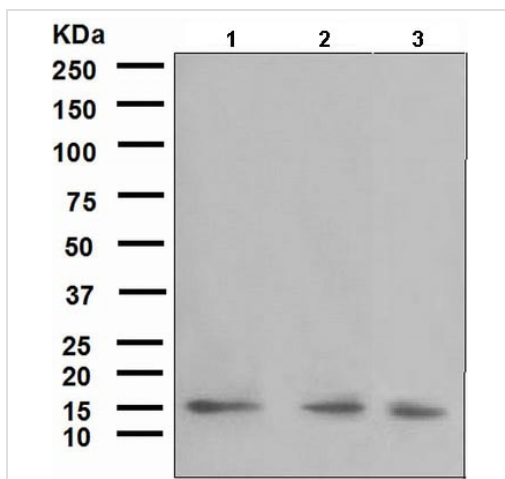
Secondary

Goat Anti-Rabbit IgG (HRP) with minimal cross-reactivity with
human IgG at 1/2000 dilution

Predicted band size: 18 kDa

Observed band size: 15 kDa

Blocking and diluting buffer: 5% NFDM/TBST.



Western blot - Anti-SEP15 antibody [NCIR128A]
(ab124840)

All lanes : Anti-SEP15 antibody [NCIR128A] (ab124840) at
1/1000 dilution (unpurified)

Lane 1 : Rat liver lysate

Lane 2 : Fetal liver lysate

Lane 3 : LnCaP lysate

Lysates/proteins at 10 µg per lane.

Predicted band size: 18 kDa

Why choose a recombinant antibody?



Research with confidence
Consistent and reproducible results



Long-term and scalable supply
Recombinant technology



Success from the first experiment
Confirmed specificity



Ethical standards compliant
Animal-free production

Anti-SEP15 antibody [NCIR128A] (ab124840)

Please note: All products are "FOR RESEARCH USE ONLY. NOT FOR USE IN DIAGNOSTIC PROCEDURES"

Our Abpromise to you: Quality guaranteed and expert technical support

- Replacement or refund for products not performing as stated on the datasheet
- Valid for 12 months from date of delivery
- Response to your inquiry within 24 hours
- We provide support in Chinese, English, French, German, Japanese and Spanish
- Extensive multi-media technical resources to help you
- We investigate all quality concerns to ensure our products perform to the highest standards

If the product does not perform as described on this datasheet, we will offer a refund or replacement. For full details of the Abpromise, please visit <https://www.abcam.co.jp/abpromise> or contact our technical team.

Terms and conditions

- Guarantee only valid for products bought direct from Abcam or one of our authorized distributors