


Anti-SEMA5A antibody ab51957

★★★★☆ [2 Abreviews](#) [1 References](#) [画像数 1](#)

製品の概要

製品名	Anti-SEMA5A antibody
製品の詳細	Goat polyclonal to SEMA5A
由来種	Goat
アプリケーション	適用あり: IHC-P
種交差性	交差種: Human 交差が予測される動物種: Mouse, Rat, Cow, Dog 
免疫原	Synthetic peptide corresponding to SEMA5A aa 91-110 (internal sequence). Sequence: DEATKKACYSKGKS Run BLAST with Run BLAST with
特記事項	<p>The Life Science industry has been in the grips of a reproducibility crisis for a number of years. Abcam is leading the way in addressing this with our range of recombinant monoclonal antibodies and knockout edited cell lines for gold-standard validation. Please check that this product meets your needs before purchasing.</p> <p>If you have any questions, special requirements or concerns, please send us an inquiry and/or contact our Support team ahead of purchase. Recommended alternatives for this product can be found below, along with publications, customer reviews and Q&As</p>

製品の特性

製品の状態	Liquid
保存方法	Shipped at 4°C. Upon delivery aliquot and store at -20°C or -80°C. Avoid repeated freeze / thaw cycles.
バッファー	pH: 7.30 Preservative: 0.02% Sodium azide Constituents: 0.5% BSA, Tris buffered saline
精製度	Immunogen affinity purified
特記事項(精製)	ab51957 was purified from goat serum by ammonium sulphate precipitation followed by antigen affinity chromatography using the immunizing peptide.
ポリ/モノ	ポリクローナル

アプリケーション

The Abpromise guarantee **Abpromise保証は、次のテスト済みアプリケーションにおけるab51957の使用に適用されます**

アプリケーションノートには、推奨の開始希釈率がありますが、適切な希釈率につきましてはご検討ください。

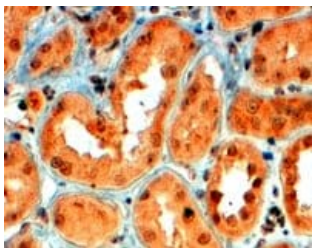
アプリケーション	Abreviews	特記事項
IHC-P		Use a concentration of 4 - 6 µg/ml.

ターゲット情報

関連性 Members of the semaphorin protein family are involved in axonal guidance during neural development. Semaphorin 5a is thought to have a bifunctional role in axon guidance, exerting both attractive and inhibitory effects on developing axons associated with limbic function. The thrombospondin repeats of Semaphorin 5a physically interact with both heparan sulfate proteoglycans and chondroitin sulfate proteoglycans, inducing attractive and inhibitory guidance cues, respectively. The biological responses to Semaphorin 5a are induced through binding to its high-affinity receptor, plexin B3, triggering intracellular signaling through Met.

細胞内局在 Membrane; single-pass type I membrane protein

画像



ab51957 at 4µg/ml staining SEMA5A in Human kidney tissue by Immunohistochemistry (Formalin/PFA-fixed paraffin-embedded sections). Steamed antigen retrieval with citrate buffer pH 6 was performed. Antibody was detected by HRP-staining.

Immunohistochemistry (Formalin/PFA-fixed paraffin-embedded sections) - Anti-SEMA5A antibody (ab51957)

Please note: All products are "FOR RESEARCH USE ONLY. NOT FOR USE IN DIAGNOSTIC PROCEDURES"

Our Abpromise to you: Quality guaranteed and expert technical support

- Replacement or refund for products not performing as stated on the datasheet
- Valid for 12 months from date of delivery
- Response to your inquiry within 24 hours
- We provide support in Chinese, English, French, German, Japanese and Spanish

- Extensive multi-media technical resources to help you
- We investigate all quality concerns to ensure our products perform to the highest standards

If the product does not perform as described on this datasheet, we will offer a refund or replacement. For full details of the Abpromise, please visit <https://www.abcam.co.jp/abpromise> or contact our technical team.

Terms and conditions

- Guarantee only valid for products bought direct from Abcam or one of our authorized distributors