


Anti-SEMA4A antibody ab70178

[3 References](#) [画像数 2](#)

製品の概要

製品名	Anti-SEMA4A antibody
製品の詳細	Rabbit polyclonal to SEMA4A
由来種	Rabbit
アプリケーション	適用あり: WB, IHC-P
種交差性	交差種: Human, African green monkey 交差が予測される動物種: Mouse, Rat 
免疫原	A synthesized peptide derived from the internal region of human SEMA4A.
特記事項	<p>The Life Science industry has been in the grips of a reproducibility crisis for a number of years. Abcam is leading the way in addressing this with our range of recombinant monoclonal antibodies and knockout edited cell lines for gold-standard validation. Please check that this product meets your needs before purchasing.</p> <p>If you have any questions, special requirements or concerns, please send us an inquiry and/or contact our Support team ahead of purchase. Recommended alternatives for this product can be found below, along with publications, customer reviews and Q&As</p>

製品の特性

製品の状態	Liquid
保存方法	Shipped at 4°C. Store at -20°C. Stable for 12 months at -20°C.
バッファー	pH: 7.40 Preservative: 0.02% Sodium azide Constituents: 0.87% Sodium chloride, 50% Glycerol (glycerin, glycerine), PBS Without Mg ²⁺ and Ca ²⁺
精製度	Immunogen affinity purified
特記事項 (精製)	The antibody was affinity-purified from rabbit antiserum by affinity-chromatography using epitope-specific immunogen.
ポリクローナル	ポリクローナル
アイソタイプ	IgG

アプリケーション

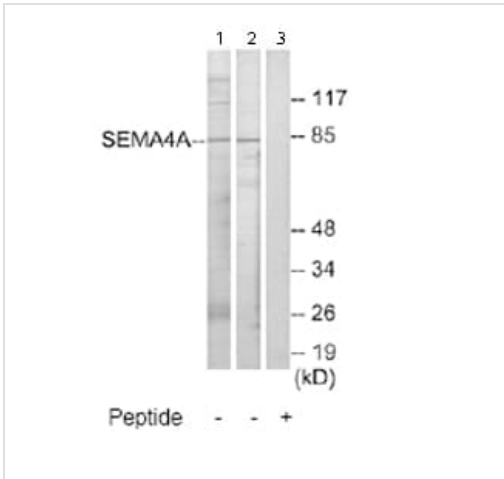
The Abpromise guarantee **Abpromise保証は、次のテスト済みアプリケーションにおけるab70178の使用に適用されず**
アプリケーションノートには、推奨の開始希釈率がありますが、適切な希釈率につきましてはご確認ください。

アプリケーション	Abreviews	特記事項
WB		1/500 - 1/1000. Predicted molecular weight: 84 kDa.
IHC-P		1/50 - 1/100.

ターゲット情報

機能	Inhibits axonal extension by providing local signals to specify territories inaccessible for growing axons.
関連疾患	<p>Defects in SEMA4A are the cause of retinitis pigmentosa type 35 (RP35) [MIM:610282]. RP leads to degeneration of retinal photoreceptor cells. Patients typically have night vision blindness and loss of midperipheral visual field. As their condition progresses, they lose their far peripheral visual field and eventually central vision as well.</p> <p>Defects in SEMA4A are the cause of cone-rod dystrophy type 10 (CORD10) [MIM:610283]. CORDs are inherited retinal dystrophies belonging to the group of pigmentary retinopathies. CORDs are characterized by retinal pigment deposits visible on fundus examination, predominantly in the macular region, and initial loss of cone photoreceptors followed by rod degeneration. This leads to decreased visual acuity and sensitivity in the central visual field, followed by loss of peripheral vision. Severe loss of vision occurs earlier than in retinitis pigmentosa.</p>
配列類似性	<p>Belongs to the semaphorin family.</p> <p>Contains 1 Ig-like C2-type (immunoglobulin-like) domain.</p> <p>Contains 1 PSI domain.</p> <p>Contains 1 Sema domain.</p>
細胞内局在	Membrane.

画像



Western blot - Anti-SEMA4A antibody (ab70178)

All lanes : Anti-SEMA4A antibody (ab70178) at 1/500 dilution

Lane 1 : Extracts from COS-7 cells

Lane 2 : Extracts from Jurkat cells

Lane 3 : Extracts from COS-7 cells with immunizing peptide at 10 µg

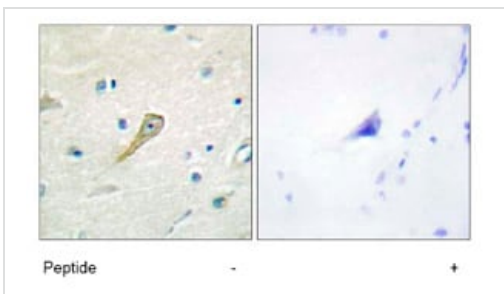
Lysates/proteins at 30 µg per lane.

Predicted band size: 84 kDa

Observed band size: 84 kDa

Additional bands at: 117 kDa, 26 kDa. We are unsure as to the identity of these extra bands.

One other band detected greater than 117 kDa.



Immunohistochemistry (Formalin/PFA-fixed paraffin-embedded sections) - Anti-SEMA4A antibody (ab70178)

Immunohistochemistry analysis of paraffin-embedded human brain tissue using ab70178 at 1/50-1/100 dilution.

Left image un-treated.

Right image treated with immunizing peptide.

Please note: All products are "FOR RESEARCH USE ONLY. NOT FOR USE IN DIAGNOSTIC PROCEDURES"

Our Abpromise to you: Quality guaranteed and expert technical support

- Replacement or refund for products not performing as stated on the datasheet
- Valid for 12 months from date of delivery
- Response to your inquiry within 24 hours
- We provide support in Chinese, English, French, German, Japanese and Spanish
- Extensive multi-media technical resources to help you
- We investigate all quality concerns to ensure our products perform to the highest standards

If the product does not perform as described on this datasheet, we will offer a refund or replacement. For full details of the Abpromise, please visit <https://www.abcam.co.jp/abpromise> or contact our technical team.

Terms and conditions

- Guarantee only valid for products bought direct from Abcam or one of our authorized distributors