

Anti-SELK antibody ab121276

1 References [画像数 6](#)

製品の概要

製品名	Anti-SELK antibody
製品の詳細	Rabbit polyclonal to SELK
由来種	Rabbit
アプリケーション	適用あり: IHC-P, WB, ICC
種交差性	交差種: Human
免疫原	antigen sequence: KRRSYGNSSD SRYDDGRGPP GNPPRRMGRI NHLRGPS, corresponding to amino acids 48-84 of Human SELK.

[Run BLAST with ExPASy](#) [Run BLAST with NCBI](#)

ポジティブ・コントロール ICC/IF: U-251 MG cells. WB: HepG2 cell lysate. IHC: Human tonsil and salivary gland tissue.

特記事項 The Life Science industry has been in the grips of a reproducibility crisis for a number of years. Abcam is leading the way in addressing this with our range of recombinant monoclonal antibodies and knockout edited cell lines for gold-standard validation. Please check that this product meets your needs before purchasing.

If you have any questions, special requirements or concerns, please send us an inquiry and/or contact our Support team ahead of purchase. Recommended alternatives for this product can be found below, along with publications, customer reviews and Q&As

製品の特性

製品の状態	Liquid
保存方法	Shipped at 4°C. Upon delivery aliquot and store at -20°C. Avoid repeated freeze / thaw cycles.
バッファー	pH: 7.20 Preservative: 0.02% Sodium azide Constituents: 59% PBS, 40% Glycerol
精製度	Immunogen affinity purified
ポリ/モノ	ポリクローナル
アイソタイプ	IgG

アプリケーション

The Abpromise guarantee

Abpromise保証は、次のテスト済みアプリケーションにおけるab121276の使用に適用されます

アプリケーションノートには、推奨の開始希釈率がありますが、適切な希釈率につきましてはご検討ください。

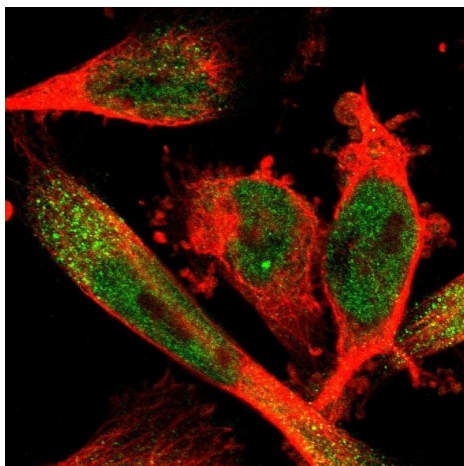
アプリケーション	Abreviews	特記事項
IHC-P		1/50 - 1/200. Perform heat mediated antigen retrieval with citrate buffer pH 6 before commencing with IHC staining protocol.
WB		Use a concentration of 0.04 - 0.4 µg/ml.
ICC		Use a concentration of 0.25 µg/ml.

ターゲット情報

配列類似性

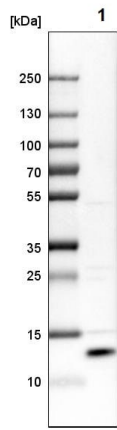
Belongs to the selenoprotein K family.

画像



Immunofluorescent staining of U-251 MG (Human brain glioma) cells labeling SELK with ab121276 at 0.25 ug/ml (green).

Immunocytochemistry - Anti-SELK antibody
(ab121276)

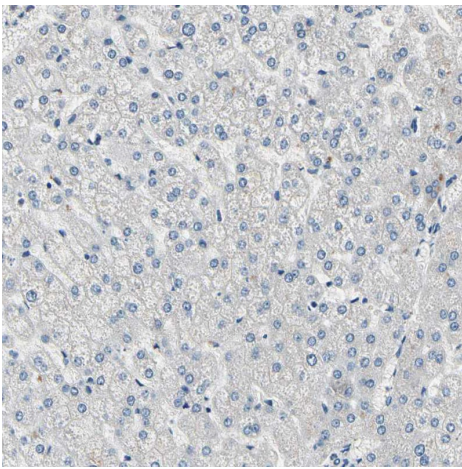


Western blot - Anti-SELK antibody (ab121276)

Anti-SELK antibody (ab121276) at 0.04 $\mu\text{g/ml}$ + HepG2 (Human liver hepatocellular carcinoma cell line) cell lysate

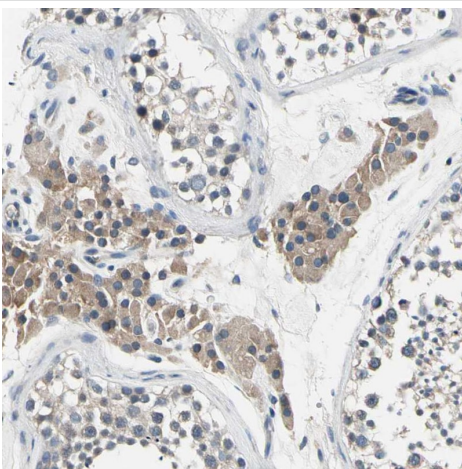
Performed under reducing conditions.

Western blot analysis of HepG2 cells labeling SELK with ab121276 at 0.04 $\mu\text{g/ml}$.



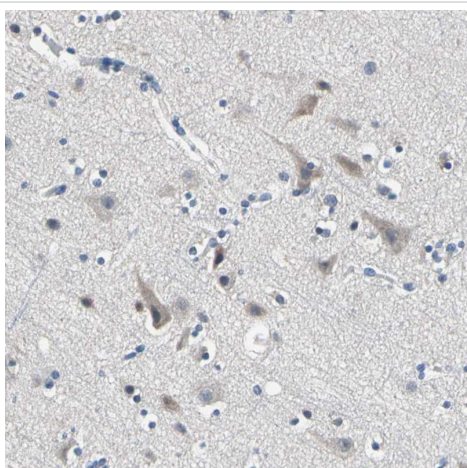
Immunohistochemistry (Formalin/PFA-fixed paraffin-embedded sections) - Anti-SELK antibody (ab121276)

ab121276 at 1/40 dilution staining SELK in Paraffin-embedded Human liver tissue by Immunohistochemistry.



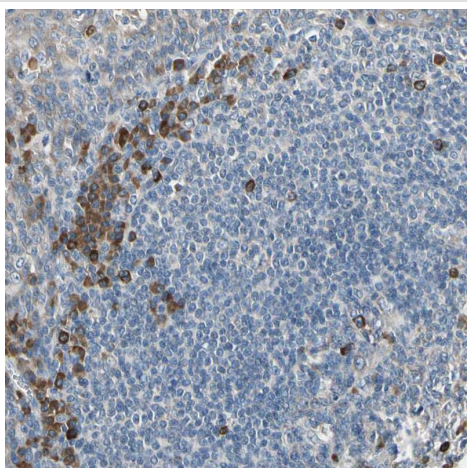
Immunohistochemistry (Formalin/PFA-fixed paraffin-embedded sections) - Anti-SELK antibody (ab121276)

ab121276 at 1/40 dilution staining SELK in Paraffin-embedded Human testis tissue by Immunohistochemistry.



ab121276 at 1/40 dilution staining SELK in Paraffin-embedded Human cerebral cortex tissue by Immunohistochemistry.

Immunohistochemistry (Formalin/PFA-fixed paraffin-embedded sections) - Anti-SELK antibody (ab121276)



ab121276 at 1/40 dilution staining SELK in Paraffin-embedded Human tonsil tissue by Immunohistochemistry.

Immunohistochemistry (Formalin/PFA-fixed paraffin-embedded sections) - Anti-SELK antibody (ab121276)

Please note: All products are "FOR RESEARCH USE ONLY. NOT FOR USE IN DIAGNOSTIC PROCEDURES"

Our Abpromise to you: Quality guaranteed and expert technical support

- Replacement or refund for products not performing as stated on the datasheet
- Valid for 12 months from date of delivery
- Response to your inquiry within 24 hours
- We provide support in Chinese, English, French, German, Japanese and Spanish
- Extensive multi-media technical resources to help you
- We investigate all quality concerns to ensure our products perform to the highest standards

If the product does not perform as described on this datasheet, we will offer a refund or replacement. For full details of the Abpromise, please visit <https://www.abcam.co.jp/abpromise> or contact our technical team.

Terms and conditions

- Guarantee only valid for products bought direct from Abcam or one of our authorized distributors