

# Anti-Sec31A antibody ab86600

[1 References](#) [画像数 2](#)

### 製品の概要

---

製品名	Anti-Sec31A antibody
製品の詳細	Rabbit polyclonal to Sec31A
由来種	Rabbit
アプリケーション	<b>適用あり:</b> WB, IP
種交差性	<b>交差種:</b> Human <b>交差が予測される動物種:</b> Pig, Chimpanzee, Ferret, Gorilla, Orangutan 
免疫原	Synthetic peptide corresponding to Human Sec31A aa 750-850. Database link: <a href="#">O94979</a>
ポジティブ・コントロール	HeLa whole cell lysate.
特記事項	<p>The Life Science industry has been in the grips of a reproducibility crisis for a number of years. Abcam is leading the way in addressing this with our range of recombinant monoclonal antibodies and knockout edited cell lines for gold-standard validation. Please check that this product meets your needs before purchasing.</p> <p>If you have any questions, special requirements or concerns, please send us an inquiry and/or contact our Support team ahead of purchase. Recommended alternatives for this product can be found below, along with publications, customer reviews and Q&amp;As</p>

### 製品の特性

---

製品の状態	Liquid
保存方法	Shipped at 4°C. Upon delivery aliquot and store at -20°C. Avoid freeze / thaw cycles.
バッファー	pH: 6.8 Preservative: 0.09% Sodium azide Constituents: 0.1% BSA, Tris buffered saline
精製度	Immunogen affinity purified
ポリ/モノ	ポリクローナル
アイソタイプ	IgG

### アプリケーション

---

## The Abpromise guarantee

**Abpromise保証は、次のテスト済みアプリケーションにおけるab86600の使用に適用されます**

アプリケーションノートには、推奨の開始希釈率がありますが、適切な希釈率につきましてはご検討ください。

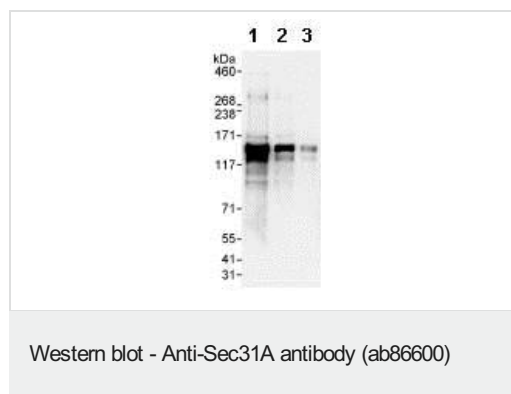
アプリケーション	Abreviews	特記事項
WB		1/2000 - 1/10000. Detects a band of approximately 133 kDa (predicted molecular weight: 133 kDa).
IP		Use at 2-5 µg/mg of lysate.

## ターゲット情報

**関連性** The protein encoded by this gene is similar to yeast Sec31 protein. Yeast Sec31 protein is known to be a component of the COPII protein complex which is responsible for vesicle budding from endoplasmic reticulum (ER). This protein was found to colocalize with SEC13, one of the other components of COPII, in the subcellular structures corresponding to the vesicle transport function.

**細胞内局在** Cytoplasm. Cytoplasmic vesicle; COPII-coated vesicle membrane; Peripheral membrane protein; Cytoplasmic side. Endoplasmic reticulum membrane; Peripheral membrane protein By similarity. Note: Associates with membranes in a GTP-dependent manner

## 画像



**All lanes :** Anti-Sec31A antibody (ab86600) at 0.04 µg/ml

**Lane 1 :** HeLa whole cell lysate at 50 µg

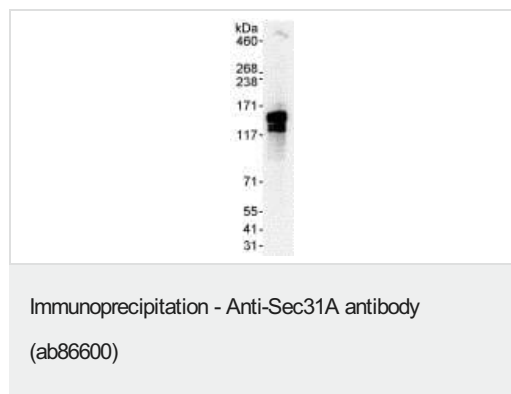
**Lane 2 :** HeLa whole cell lysate at 15 µg

**Lane 3 :** HeLa whole cell lysate at 5 µg

**Predicted band size:** 133 kDa

**Observed band size:** 133 kDa

**Exposure time:** 3 seconds



Detection of Sec31A by Western Blot of Immunoprecipitate.  
ab86600 at 0.1µg/ml staining Sec31A in HeLa whole cell lysate immunoprecipitated using ab86600 at 3µg/mg lysate (1 mg/IP; 20% of IP loaded/lane).

Detection: Chemiluminescence with exposure time of 3 seconds.

**Please note:** All products are "FOR RESEARCH USE ONLY. NOT FOR USE IN DIAGNOSTIC PROCEDURES"

## **Our Abpromise to you: Quality guaranteed and expert technical support**

---

- Replacement or refund for products not performing as stated on the datasheet
- Valid for 12 months from date of delivery
- Response to your inquiry within 24 hours
  
- We provide support in Chinese, English, French, German, Japanese and Spanish
- Extensive multi-media technical resources to help you
- We investigate all quality concerns to ensure our products perform to the highest standards

If the product does not perform as described on this datasheet, we will offer a refund or replacement. For full details of the Abpromise, please visit <https://www.abcam.co.jp/abpromise> or contact our technical team.

## **Terms and conditions**

---

- Guarantee only valid for products bought direct from Abcam or one of our authorized distributors