

Anti-SEC24B antibody ab122445

画像数 2

製品の概要

製品名	Anti-SEC24B antibody
製品の詳細	Rabbit polyclonal to SEC24B
由来種	Rabbit
アプリケーション	適用あり: ICC/IF, IHC-P
種交差性	交差種: Human
免疫原	antigen sequence: SFQGAASSAS HLHTSASQPY SSFVNHYNSP AMYSASSSVA SQGFPSTCGH YAMSTVSNAA YPSVSYPSLP AGDTYGQMFT SQNAPTVR, corresponding to amino acids 133-220 of Human SEC24B Run BLAST with Expasy Run BLAST with NCBI
ポジティブ・コントロール	IHC: Human kidney tissue ICC/IF: Human cell line A-431
特記事項	<p>The Life Science industry has been in the grips of a reproducibility crisis for a number of years. Abcam is leading the way in addressing this with our range of recombinant monoclonal antibodies and knockout edited cell lines for gold-standard validation. Please check that this product meets your needs before purchasing.</p> <p>If you have any questions, special requirements or concerns, please send us an inquiry and/or contact our Support team ahead of purchase. Recommended alternatives for this product can be found below, along with publications, customer reviews and Q&As</p>

製品の特性

製品の状態	Liquid
保存方法	Shipped at 4°C. Upon delivery aliquot and store at -20°C. Avoid repeated freeze / thaw cycles.
バッファー	pH: 7.20 Preservative: 0.02% Sodium azide Constituents: 40% Glycerol (glycerin, glycerine), 59% PBS
精製度	Immunogen affinity purified
ポリ/モノ	ポリクローナル
アイソタイプ	IgG

アプリケーション

The Abpromise guarantee

Abpromise保証は、次のテスト済みアプリケーションにおけるab122445の使用に適用されます

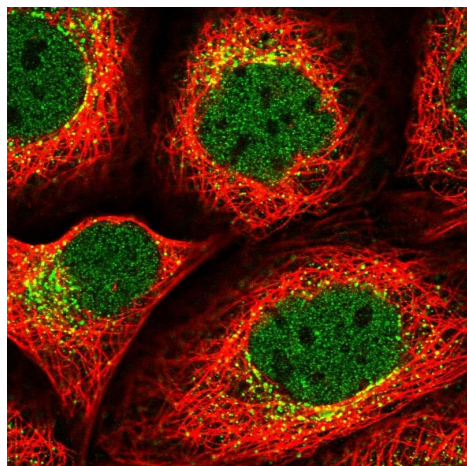
アプリケーションノートには、推奨の開始希釈率がありますが、適切な希釈率につきましてはご検討ください。

アプリケーション	Abreviews	特記事項
ICC/IF		Use a concentration of 0.25 - 2 µg/ml.
IHC-P		1/200 - 1/500. Perform heat mediated antigen retrieval with citrate buffer pH 6 before commencing with IHC staining protocol.

ターゲット情報

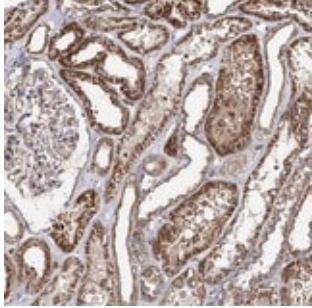
機能	Component of the COPII coat, that covers ER-derived vesicles involved in transport from the endoplasmic reticulum to the Golgi apparatus. COPII acts in the cytoplasm to promote the transport of secretory, plasma membrane, and vacuolar proteins from the endoplasmic reticulum to the Golgi complex.
組織特異性	Expressed in fibroblasts, hepatocytes, and lymphocytes.
配列類似性	Belongs to the SEC23/SEC24 family. SEC24 subfamily.
細胞内局在	Cytoplasm. Cytoplasm > perinuclear region. Endoplasmic reticulum membrane. Golgi apparatus membrane. Golgi apparatus membrane.

画像



Immunocytochemistry/immunofluorescence analysis of human cell line A-431 labelling SEC24B with ab122445 at 2 µg/mL shows localization to nucleoplasm & vesicles.

Immunocytochemistry/ Immunofluorescence - Anti-SEC24B antibody (ab122445)



ab122445, at 1/200 dilution, staining SEC24B in paraffin-embedded Human kidney tissue by Immunohistochemistry.

Immunohistochemistry (Formalin/PFA-fixed paraffin-embedded sections) - Anti-SEC24B antibody (ab122445)

Please note: All products are "FOR RESEARCH USE ONLY. NOT FOR USE IN DIAGNOSTIC PROCEDURES"

Our Abpromise to you: Quality guaranteed and expert technical support

- Replacement or refund for products not performing as stated on the datasheet
- Valid for 12 months from date of delivery
- Response to your inquiry within 24 hours
- We provide support in Chinese, English, French, German, Japanese and Spanish
- Extensive multi-media technical resources to help you
- We investigate all quality concerns to ensure our products perform to the highest standards

If the product does not perform as described on this datasheet, we will offer a refund or replacement. For full details of the Abpromise, please visit <https://www.abcam.co.jp/abpromise> or contact our technical team.

Terms and conditions

- Guarantee only valid for products bought direct from Abcam or one of our authorized distributors