

Anti-SEC16A/SEC16 antibody ab70722

★★★★★ [6 Abreviews](#) [3 References](#) [画像数 2](#)

製品の概要

| | |
|--------------|---|
| 製品名 | Anti-SEC16A/SEC16 antibody |
| 製品の詳細 | Rabbit polyclonal to SEC16A/SEC16 |
| 由来種 | Rabbit |
| アプリケーション | 適用あり: WB, IP |
| 種交差性 | 交差種: Human 交差が予測される動物種: Dog, Ferret, Rhesus monkey, Gorilla, Orangutan, Bat  |
| 免疫原 | Synthetic peptide corresponding to Human SEC16A/SEC16. Database link: O15027 |
| ポジティブ・コントロール | Whole cell lysate from HeLa and 293T cells. |
| 特記事項 | <p>The Life Science industry has been in the grips of a reproducibility crisis for a number of years. Abcam is leading the way in addressing this with our range of recombinant monoclonal antibodies and knockout edited cell lines for gold-standard validation. Please check that this product meets your needs before purchasing.</p> <p>If you have any questions, special requirements or concerns, please send us an inquiry and/or contact our Support team ahead of purchase. Recommended alternatives for this product can be found below, along with publications, customer reviews and Q&As</p> |

製品の特性

| | |
|--------|---|
| 製品の状態 | Liquid |
| 保存方法 | Shipped at 4°C. Upon delivery aliquot and store at -20°C. Avoid freeze / thaw cycles. |
| バッファー | pH: 6.8 Preservative: 0.09% Sodium azide Constituents: 0.1% BSA, Tris buffered saline |
| 精製度 | Immunogen affinity purified |
| ポリ/モノ | ポリクローナル |
| アイソタイプ | IgG |

アプリケーション

The Abpromise guarantee

Abpromise保証は、次のテスト済みアプリケーションにおけるab70722の使用に適用されます

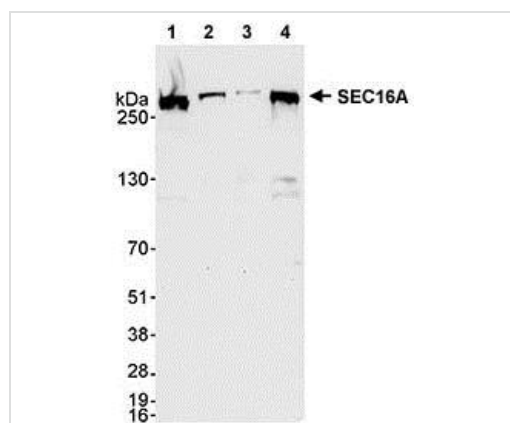
アプリケーションノートには、推奨の開始希釈率がありますが、適切な希釈率につきましてはご検討ください。

| アプリケーション | Abreviews | 特記事項 |
|----------|-----------|---|
| WB | ★★★★☆ (4) | 1/2000 - 1/10000. Detects a band of approximately >250 kDa (predicted molecular weight: 234 kDa). |
| IP | | Use at 1-4 µg/mg of lysate. |

ターゲット情報

- 関連性** SEC16A is required for secretory cargo traffic from the endoplasmic reticulum to the Golgi apparatus. It defines endoplasmic reticulum exit sites (ERES). SAR1A-GTP-dependent assembly of SEC16A on the ER membrane forms an organized scaffold defining an ERES. It is required for normal transitional endoplasmic reticulum (tER) organization.
- 細胞内局在** Endoplasmic reticulum membrane; Peripheral membrane protein. Golgi apparatus membrane; Peripheral membrane protein. Note=SAR1A activity is required to maintain SEC16A localization at discrete locations on the ER membrane perhaps by preventing its dissociation.

画像



Western blot - Anti-SEC16A/SEC16 antibody
(ab70722)

All lanes : Anti-SEC16A/SEC16 antibody (ab70722) at 0.04 µg/ml

Lane 1 : Whole cell lysate from HeLa cells at 50 µg

Lane 2 : Whole cell lysate from HeLa cells at 15 µg

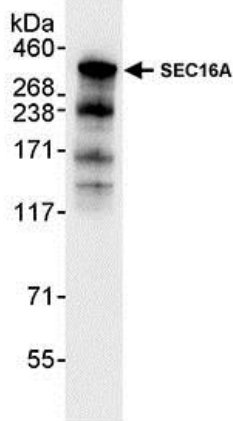
Lane 3 : Whole cell lysate from HeLa cells at 5 µg

Lane 4 : Whole cell lysate from 293T cells at 50 µg

Predicted band size: 234 kDa

Observed band size: >250 kDa

Exposure time: 30 seconds



Immunoprecipitation - Anti-SEC16A/SEC16 antibody
(ab70722)

Detection of Human SEC16A/SEC16 by Immunoprecipitation in Whole cell lysate from HeLa cells (1 mg for IP), using ab70722 at 3 $\mu\text{g}/\text{mg}$ lysate. Subsequent Western blot detection of SEC16A/SEC16 was performed using ab70722 at 0.04 $\mu\text{g}/\text{ml}$.

Please note: All products are "FOR RESEARCH USE ONLY. NOT FOR USE IN DIAGNOSTIC PROCEDURES"

Our Abpromise to you: Quality guaranteed and expert technical support

- Replacement or refund for products not performing as stated on the datasheet
- Valid for 12 months from date of delivery
- Response to your inquiry within 24 hours
- We provide support in Chinese, English, French, German, Japanese and Spanish
- Extensive multi-media technical resources to help you
- We investigate all quality concerns to ensure our products perform to the highest standards

If the product does not perform as described on this datasheet, we will offer a refund or replacement. For full details of the Abpromise, please visit <https://www.abcam.co.jp/abpromise> or contact our technical team.

Terms and conditions

- Guarantee only valid for products bought direct from Abcam or one of our authorized distributors