

Anti-Seasonal and Swine H1N1 Neuraminidase antibody ab91645

画像数 3

製品の概要

製品名	Anti-Seasonal and Swine H1N1 Neuraminidase antibody
製品の詳細	Rabbit polyclonal to Seasonal and Swine H1N1 Neuraminidase
由来種	Rabbit
特異性	Recognizes the Neuraminidase from the both the Seasonal H1N1 Neuraminidase and Swine H1N1 Neuraminidase (A/California/14/2009 (H1N1)) in ELISA and WB. It will detect 2 ng of free peptide at 1 µg/mL.
アプリケーション	適用あり: ELISA, WB
種交差性	交差種: Influenza A virus (A/Georgia/20/2006(H1N1)), Influenza A virus (A/California/14/2009(H1N1))
免疫原	Synthetic peptides from the Seasonal H1N1 Neuraminidase protein and the novel Swine H1N1 Neuraminidase protein (Genbank accession ACA33620 and ACQ76308).
ポジティブ・コントロール	ELISA: Seasonal and Swine H1N1 Neuraminidase peptides, Swine H1N1 Neuraminidase recombinant protein. WB: Swine H1N1 Neuraminidase recombinant protein.
特記事項	<p>The Life Science industry has been in the grips of a reproducibility crisis for a number of years. Abcam is leading the way in addressing this with our range of recombinant monoclonal antibodies and knockout edited cell lines for gold-standard validation. Please check that this product meets your needs before purchasing.</p> <p>If you have any questions, special requirements or concerns, please send us an inquiry and/or contact our Support team ahead of purchase. Recommended alternatives for this product can be found below, along with publications, customer reviews and Q&As</p>

製品の特性

製品の状態	Liquid
保存方法	Shipped at 4°C. Store at +4°C.
バッファー	pH: 7.2 Preservative: 0.02% Sodium azide Constituent: PBS
精製度	Immunogen affinity purified

ポリ/モノ
アイソタイプ

ポリクローナル
IgG

アプリケーション

The Abpromise guarantee **Abpromise保証は、** 次のテスト済みアプリケーションにおけるab91645の使用に適用されます
アプリケーションノートには、推奨の開始希釈率がありますが、適切な希釈率につきましてはご検討ください。

アプリケーション	Abreviews	特記事項
ELISA		
WB		

追加情報

ELISA: Use at a concentration of 1 µg/ml.

Not yet tested in other applications.

Optimal dilutions/concentrations should be determined by the end user.

ターゲット情報

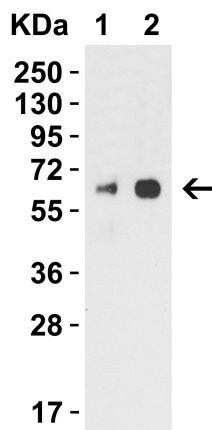
関連性

Influenza A virus is a major public health threat, killing more than 30,000 people per year in the USA. In early 2009, a novel swine-origin influenza A (H1N1) virus was identified in specimens obtained from patients in Mexico and the United States. Influenza A virus has one of sixteen possible Hemagglutinin (HA) surface proteins and one of nine possible neuraminidase (NA) surface proteins. The genetic make-up of this swine flu virus is unlike any other: it is an H1N1 strain that combines a triple assortment first identified in 1998 including human, swine, and avian influenza with two new pig H3N2 virus genes from Eurasia, themselves of recent human origin. The distinct antigenic properties of the new swine influenza virus compared with seasonal influenza A (H1N1) virus suggest that human immunity against new swine influenza virus is limited.

細胞内局在

Cell Membrane

画像



Western blot - Anti-Seasonal and Swine H1N1
Neuraminidase antibody (ab91645)

All lanes : Anti-Seasonal and Swine H1N1 Neuraminidase
antibody (ab91645) at 2 µg/ml

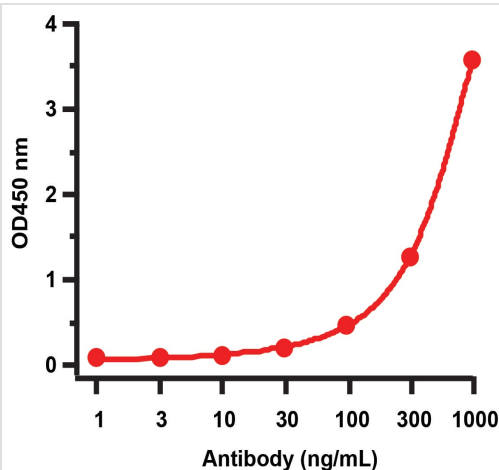
Lane 1 : 50 ng of Swine H1N1 Neuraminidase recombinant protein

Lane 2 : 100 ng of Swine H1N1 Neuraminidase recombinant
protein

Secondary

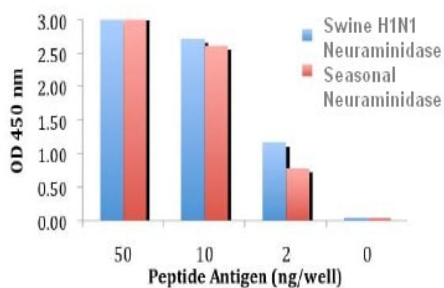
All lanes : Goat anti-rabbit IgG HRP conjugate at 1/10000 dilution

1h incubation at RT in 5% NFDM/TBST.



ELISA - Anti-Seasonal and Swine H1N1
Neuraminidase antibody (ab91645)

Validation with H1N1 NA Protein Coating Antigen: Swine H1N1
Neuraminidase recombinant protein, 2 µg/mL, incubated at 4°C
overnight. Detection Antibodies: ab91645, dilution: 1-1000 ng/mL,
incubated at RT for 1 hr. Secondary Antibodies: Goat anti-rabbit at
1/10000 dilution, incubated at RT for 1 hr.



ELISA - Anti-Seasonal and Swine H1N1
Neuraminidase antibody (ab91645)

ELISA using ab91645 at 1 µg/ml, detects 2 ng of free peptide
(Seasonal and Swine H1N1 Neuraminidase).

Please note: All products are "FOR RESEARCH USE ONLY. NOT FOR USE IN DIAGNOSTIC PROCEDURES"

Our Abpromise to you: Quality guaranteed and expert technical support

- Replacement or refund for products not performing as stated on the datasheet
- Valid for 12 months from date of delivery
- Response to your inquiry within 24 hours
- We provide support in Chinese, English, French, German, Japanese and Spanish
- Extensive multi-media technical resources to help you
- We investigate all quality concerns to ensure our products perform to the highest standards

If the product does not perform as described on this datasheet, we will offer a refund or replacement. For full details of the Abpromise, please visit <https://www.abcam.co.jp/abpromise> or contact our technical team.

Terms and conditions

- Guarantee only valid for products bought direct from Abcam or one of our authorized distributors