

Anti-SDR-2 antibody ab121538

画像数 2

製品の概要

製品名	Anti-SDR-2 antibody
製品の詳細	Rabbit polyclonal to SDR-2
由来種	Rabbit
アプリケーション	適用あり: IHC-P, WB
種交差性	交差種: Human
免疫原	Recombinant fragment corresponding to Human SDR-2 aa 187-336 (internal sequence).
ポジティブ・コントロール	Human epididymis tissue. RT4 cell and U-251 MG cells lysate; Human Plasma and Liver tissue lysate.
特記事項	<p>The Life Science industry has been in the grips of a reproducibility crisis for a number of years. Abcam is leading the way in addressing this with our range of recombinant monoclonal antibodies and knockout edited cell lines for gold-standard validation. Please check that this product meets your needs before purchasing.</p> <p>If you have any questions, special requirements or concerns, please send us an inquiry and/or contact our Support team ahead of purchase. Recommended alternatives for this product can be found below, along with publications, customer reviews and Q&As</p>

製品の特性

製品の状態	Liquid
保存方法	Shipped at 4°C. Upon delivery aliquot and store at -20°C. Avoid freeze / thaw cycles.
バッファー	pH: 7.20 Preservative: 0.02% Sodium azide Constituents: 59% PBS, 40% Glycerol (glycerin, glycerine)
精製度	Immunogen affinity purified
ポリ/モノ	ポリクローナル
アイソタイプ	IgG

アプリケーション

The Abpromise guarantee

Abpromise保証は、次のテスト済みアプリケーションにおけるab121538の使用に適用されます

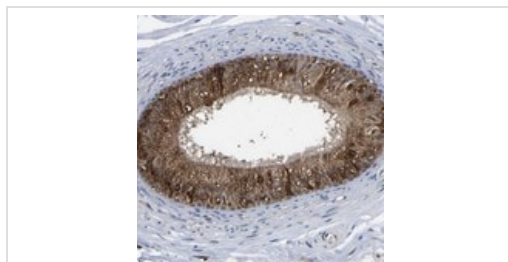
アプリケーションノートには、推奨の開始希釈率がありますが、適切な希釈率につきましてはご確認ください。

アプリケーション	Abreviews	特記事項
IHC-P		1/50 - 1/200. Perform heat mediated antigen retrieval with citrate buffer pH 6 before commencing with IHC staining protocol.
WB		Use a concentration of 0.04 - 0.4 µg/ml.

ターゲット情報

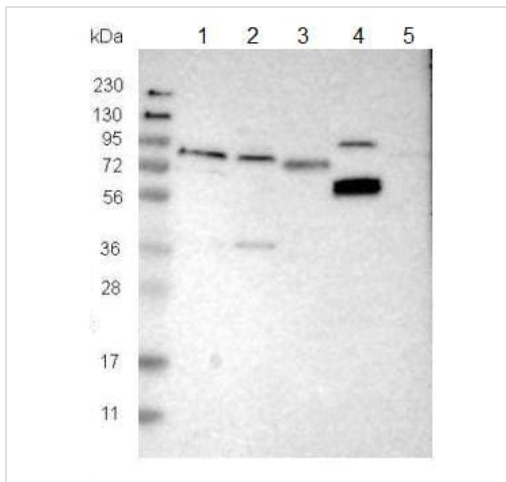
機能	Ferric-chelate reductases reduce Fe(3+) to Fe(2+) before its transport from the endosome to the cytoplasm.
配列類似性	Belongs to the FRRS1 family. Contains 1 cytochrome b561 domain. Contains 1 DOMON domain. Contains 1 reelin domain.
細胞内局在	Membrane.

画像



ab121538 at 1/100 dilution staining SDR-2 in paraffin-embedded Human epididymis tissue by Immunohistochemistry.

Immunohistochemistry (Formalin/PFA-fixed paraffin-embedded sections) - Anti-SDR-2 antibody (ab121538)



Western blot - Anti-SDR-2 antibody (ab121538)

All lanes : Anti-SDR-2 antibody (ab121538) at 1/250 dilution

Lane 1 : RT4 cell lysate

Lane 2 : U-251 MG cell lysate

Lane 3 : Human Plasma lysate

Lane 4 : Human Liver tissue lysate

Lane 5 : Human Tonsil tissue lysate

Developed using the ECL technique.

Please note: All products are "FOR RESEARCH USE ONLY. NOT FOR USE IN DIAGNOSTIC PROCEDURES"

Our Abpromise to you: Quality guaranteed and expert technical support

- Replacement or refund for products not performing as stated on the datasheet
- Valid for 12 months from date of delivery
- Response to your inquiry within 24 hours
- We provide support in Chinese, English, French, German, Japanese and Spanish
- Extensive multi-media technical resources to help you
- We investigate all quality concerns to ensure our products perform to the highest standards

If the product does not perform as described on this datasheet, we will offer a refund or replacement. For full details of the Abpromise, please visit <https://www.abcam.co.jp/abpromise> or contact our technical team.

Terms and conditions

- Guarantee only valid for products bought direct from Abcam or one of our authorized distributors