

### Anti-SDHC antibody [EPR11035(B)] ab155999

リコンビナント **RabMAb**

#### 9 References [画像数 7](#)

#### 製品の概要

製品名	Anti-SDHC antibody [EPR11035(B)]
製品の詳細	Rabbit monoclonal [EPR11035(B)] to SDHC
由来種	Rabbit
アプリケーション	<b>適用あり:</b> WB, IHC-P <b>適用なし:</b> Flow Cyt, ICC/IF or IP
種交差性	<b>交差種:</b> Mouse, Rat, Human
免疫原	Synthetic peptide corresponding to residues in Human SDHC (UniProt Q99643).
ポジティブ・コントロール	THP-1, HeLa and fetal liver lysates; Human liver and lung carcinoma tissues; rat liver lysates; THP-1; Mouse brain lysates.
特記事項	This product is a recombinant monoclonal antibody, which offers several advantages including: <ul style="list-style-type: none"> <li>- High batch-to-batch consistency and reproducibility</li> <li>- Improved sensitivity and specificity</li> <li>- Long-term security of supply</li> <li>- Animal-free production</li> </ul> For more information <a href="#">see here</a> . Our RabMAb <sup>®</sup> technology is a patented hybridoma-based technology for making rabbit monoclonal antibodies. For details on our patents, please refer to <a href="#">RabMAb<sup>®</sup> patents</a> .

#### 製品の特性

製品の状態	Liquid
保存方法	Shipped at 4°C. Store at +4°C short term (1-2 weeks). Upon delivery aliquot. Store at -20°C. Avoid freeze / thaw cycle.
バッファー	Preservative: 0.01% Sodium azide Constituents: 40% Glycerol, 0.05% BSA, 59% PBS
精製度	Protein A purified
ポリ/モノ	モノクローナル
クローン名	EPR11035(B)
アイソタイプ	IgG

## アプリケーション

The Abpromise guarantee Abpromise保証は、 次のテスト済みアプリケーションにおけるab155999の使用に適用されます  
アプリケーションノートには、推奨の開始希釈率がありますが、適切な希釈率につきましてはご検討ください。

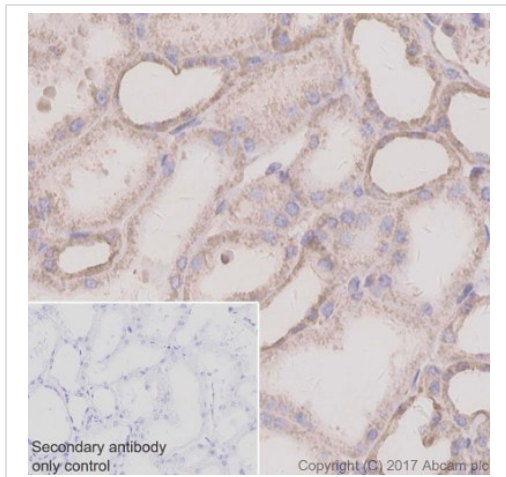
アプリケーション	Abreviews	特記事項
WB		1/10000. Predicted molecular weight: 19 kDa. <b>For unpurified use at 1/10000 - 1/50000.</b>  The mouse and rat recommendation is based on the WB results. This antibody may not be suitable for IHC with mouse or rat samples.
IHC-P		1/700. Perform heat mediated antigen retrieval with Tris/EDTA buffer pH 9.0 before commencing with IHC staining protocol. <b>For unpurified use at 1/250 -1/500.</b>

追加情報 Is unsuitable for Flow Cyt, ICC/IF or IP.

## ターゲット情報

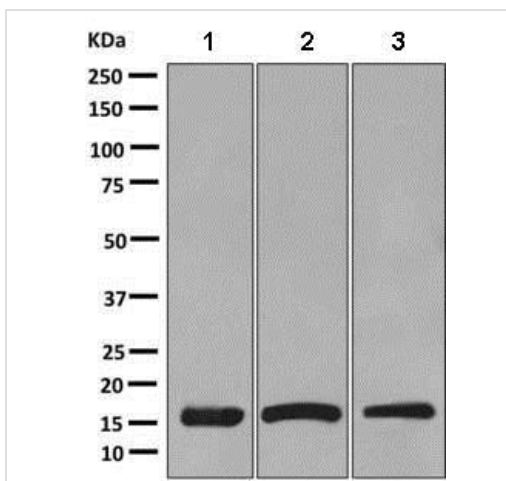
機能	Membrane-anchoring subunit of succinate dehydrogenase (SDH) that is involved in complex II of the mitochondrial electron transport chain and is responsible for transferring electrons from succinate to ubiquinone (coenzyme Q).
パスウェイ	Carbohydrate metabolism; tricarboxylic acid cycle.
関連疾患	Defects in SDHC are the cause of hereditary paragangliomas type 3 (PGL3) [MIM:605373]; also known as autosomal dominant non-chromaffin paragangliomas type 3. Non-chromaffin paragangliomas are usually benign, neural crest derived tumors of parasympathetic ganglia. Defects in SDHC are a cause of paraganglioma and gastric stromal sarcoma (PGGSS) [MIM:606864]; also known as Carney-Stratakis syndrome. Gastrointestinal stromal tumors may be sporadic or inherited in an autosomal dominant manner, alone or as a component of a syndrome associated with other tumors, such as in the context of neurofibromatosis type 1 (NF1). Patients have both gastrointestinal stromal tumors and paragangliomas. Susceptibility to the tumors was inherited in an apparently autosomal dominant manner, with incomplete penetrance.
配列類似性	Belongs to the cytochrome b560 family.
細胞内局在	Mitochondrion inner membrane.

## 画像



Immunohistochemistry (Formalin/PFA-fixed paraffin-embedded sections) - Anti-SDHC antibody [EPR11035(B)] (ab155999)

Immunohistochemistry (Formalin/PFA-fixed paraffin-embedded sections) analysis of Human kidney tissue sections labeling SDHC with purified ab155999 at 1:700 dilution (0.2 µg/ml). Heat mediated antigen retrieval was performed using EDTA Buffer, pH9.0. Tissue was counterstained with Hematoxylin. ImmunoHistoProbe one step HRP Polymer (ready to use) secondary antibody was used at 1:0 dilution. PBS instead of the primary antibody was used as the negative control.



Western blot - Anti-SDHC antibody [EPR11035(B)] (ab155999)

**All lanes** : Anti-SDHC antibody [EPR11035(B)] (ab155999) at 1/10000 dilution (unpurified)

**Lane 1** : THP-1 cell lysate

**Lane 2** : HeLa cell lysate

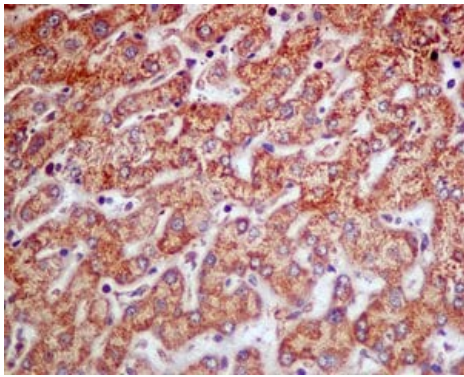
**Lane 3** : Fetal liver lysate

Lysates/proteins at 10 µg per lane.

**Secondary**

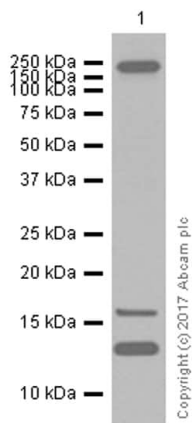
**All lanes** : HRP labelled goat anti-rabbit at 1/2000 dilution

**Predicted band size:** 19 kDa



Immunohistochemical analysis of paraffin-embedded Human liver tissue labeling SDHC with unpurified ab155999 at 1/250 dilution.

Immunohistochemistry (Formalin/PFA-fixed paraffin-embedded sections) - Anti-SDHC antibody [EPR11035(B)] (ab155999)



Anti-SDHC antibody [EPR11035(B)] (ab155999) at 1/50000 dilution (purified) + Rat liver lysates at 15 µg

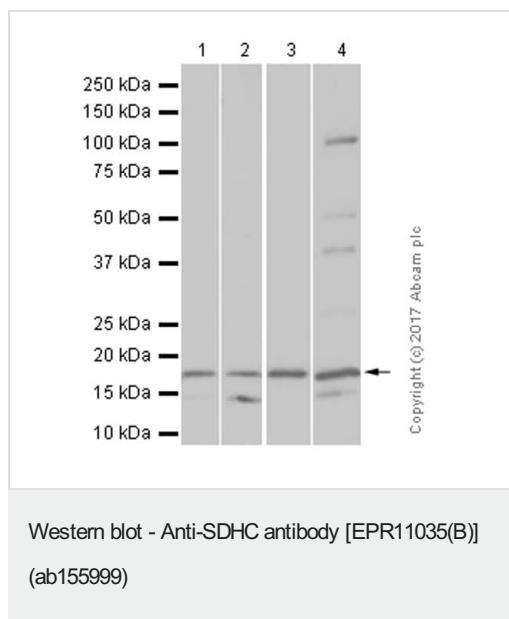
### Secondary

Goat Anti-Rabbit IgG H&L (HRP) ([ab97051](#)) at 1/100000 dilution

**Predicted band size:** 19 kDa

Blocking and diluting buffer: 5% NFDM/TBST

Western blot - Anti-SDHC antibody [EPR11035(B)] (ab155999)



**All lanes :** Anti-SDHC antibody [EPR11035(B)] (ab155999) at 1/10000 dilution (purified)

**Lane 1 :** THP-1 (Human monocytic leukemia monocyte) whole cell lysates

**Lane 2 :** Human fetal liver lysates

**Lane 3 :** Mouse brain lysates

**Lane 4 :** Rat brain lysates

Lysates/proteins at 20 µg per lane.

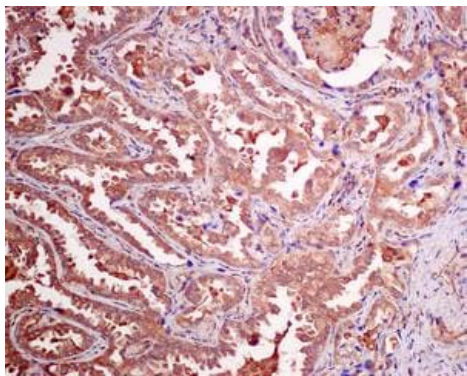
### Secondary

**All lanes :** Anti-Rabbit IgG (HRP), specific to the non-reduced form of IgG at 1/2000 dilution

**Predicted band size:** 19 kDa

**Observed band size:** 19 kDa

Blocking and diluting buffer: 5% NFDM/TBST



Immunohistochemical analysis of paraffin-embedded Human lung carcinoma tissue labeling SDHC with unpurified ab155999 at 1/250 dilution.

Immunohistochemistry (Formalin/PFA-fixed paraffin-embedded sections) - Anti-SDHC antibody [EPR11035(B)] (ab155999)

Why choose a recombinant antibody?



**Research with confidence**  
Consistent and reproducible results



**Long-term and scalable supply**  
Recombinant technology



**Success from the first experiment**  
Confirmed specificity



**Ethical standards compliant**  
Animal-free production

Anti-SDHC antibody [EPR11035(B)] (ab155999)

**Please note:** All products are "FOR RESEARCH USE ONLY. NOT FOR USE IN DIAGNOSTIC PROCEDURES"

## Our Abpromise to you: Quality guaranteed and expert technical support

- Replacement or refund for products not performing as stated on the datasheet
- Valid for 12 months from date of delivery
- Response to your inquiry within 24 hours
- We provide support in Chinese, English, French, German, Japanese and Spanish
- Extensive multi-media technical resources to help you
- We investigate all quality concerns to ensure our products perform to the highest standards

If the product does not perform as described on this datasheet, we will offer a refund or replacement. For full details of the Abpromise, please visit <https://www.abcam.co.jp/abpromise> or contact our technical team.

## Terms and conditions

- Guarantee only valid for products bought direct from Abcam or one of our authorized distributors