

# Anti-SCYL2 antibody ab103819

**1** [References](#)   [画像数 2](#)

### 製品の概要

製品名	Anti-SCYL2 antibody
製品の詳細	Rabbit polyclonal to SCYL2
由来種	Rabbit
アプリケーション	<b>適用あり:</b> WB
種交差性	<b>交差種:</b> Human
免疫原	Recombinant full length protein within Human SCYL2 aa 1-950. The exact immunogen sequence used to generate this antibody is proprietary information. If additional detail on the immunogen is needed to determine the suitability of the antibody for your needs, please <b><a href="#">contact</a></b> our Scientific Support team to discuss your requirements.
ポジティブ・コントロール	Jurkat cell line lysate. SCYL2 transfected 293T cell line lysate.
特記事項	<p>The Life Science industry has been in the grips of a reproducibility crisis for a number of years. Abcam is leading the way in addressing this with our range of recombinant monoclonal antibodies and knockout edited cell lines for gold-standard validation. Please check that this product meets your needs before purchasing.</p> <p>If you have any questions, special requirements or concerns, please send us an inquiry and/or contact our Support team ahead of purchase. Recommended alternatives for this product can be found below, along with publications, customer reviews and Q&amp;As</p>

### 製品の特性

製品の状態	Liquid
保存方法	Shipped at 4°C. Upon delivery aliquot and store at -20°C. Avoid repeated freeze / thaw cycles.
バッファー	pH: 7.40 Constituent: 100% PBS
精製度	Protein A purified
ポリ/モノ	ポリクローナル
アイソタイプ	IgG

### アプリケーション

## The Abpromise guarantee

**Abpromise保証は、次のテスト済みアプリケーションにおけるab103819の使用に適用されます**

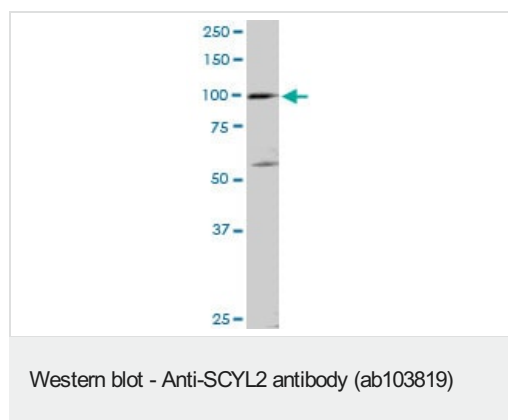
アプリケーションノートには、推奨の開始希釈率がありますが、適切な希釈率につきましてはご検討ください。

アプリケーション	Abreviews	特記事項
WB		Use a concentration of 1 µg/ml. Predicted molecular weight: 104 kDa.

## ターゲット情報

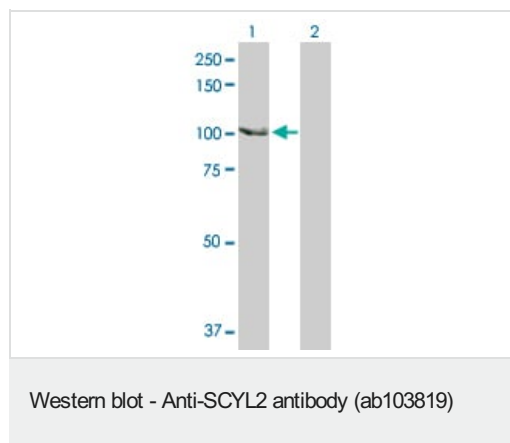
機能	Component of AP2-containing clathrin coated structures at the plasma membrane or of endocytic coated vesicles. According to PubMed:15809293, probable serine/threonine-protein kinase that phosphorylates, in vitro, the beta2-subunit of the plasma membrane adapter complex AP2 and other proteins in presence of poly-L-lysine. According to PubMed:16914521, has no detectable kinase activity in vitro. May regulate clathrin-dependent trafficking between the TGN and/or the endosomal system.
配列類似性	Belongs to the protein kinase superfamily. Contains 1 HEAT repeat. Contains 1 protein kinase domain.
翻訳後修飾	According to PubMed:15809293, autophosphorylated in presence of poly-L-lysine.
細胞内局在	Cytoplasm > perinuclear region. Cytoplasmic vesicle > clathrin-coated vesicle. Golgi apparatus > trans-Golgi network membrane. Endosome membrane. According to PubMed:15809293, plasma membrane-associated in clathrin-coated vesicles. According to PubMed:16914521, colocalizes to the trans-Golgi network (TGN) and to endosomal membranes with clathrin, transferrin and plasma membrane adapter AP1 and AP3 complexes.

## 画像



Anti-SCYL2 antibody (ab103819) at 1 µg/ml + Jurkat cell lysate at 50 µg

**Predicted band size: 104 kDa**



**All lanes :** Anti-SCYL2 antibody (ab103819) at 1 µg/ml

**Lane 1 :** SCYL2 transfected 293T cell line lysate

**Lane 2 :** Non transfected 293T cell line lysate

Lysates/proteins at 25 µg per lane.

**Predicted band size:** 104 kDa

**Please note:** All products are "FOR RESEARCH USE ONLY. NOT FOR USE IN DIAGNOSTIC PROCEDURES"

### Our Abpromise to you: Quality guaranteed and expert technical support

- Replacement or refund for products not performing as stated on the datasheet
- Valid for 12 months from date of delivery
- Response to your inquiry within 24 hours
- We provide support in Chinese, English, French, German, Japanese and Spanish
- Extensive multi-media technical resources to help you
- We investigate all quality concerns to ensure our products perform to the highest standards

If the product does not perform as described on this datasheet, we will offer a refund or replacement. For full details of the Abpromise, please visit <https://www.abcam.co.jp/abpromise> or contact our technical team.

### Terms and conditions

- Guarantee only valid for products bought direct from Abcam or one of our authorized distributors