


Anti-SCYL1 antibody ab95074

★★★★★ [1 Abreviews](#) [1 References](#) [画像数 2](#)

製品の概要

製品名	Anti-SCYL1 antibody
製品の詳細	Rabbit polyclonal to SCYL1
由来種	Rabbit
アプリケーション	適用あり: WB, IP
種交差性	交差種: Mouse, Human 交差が予測される動物種: Guinea pig, Chimpanzee, Rhesus monkey, Gorilla, Opossum, Orangutan, Elephant 
免疫原	Synthetic peptide, corresponding to a region between residues 758 and 808 of Human SCYL1 (NP_065731.3).
ポジティブ・コントロール	HeLa, 293T and NIH3T3 whole cell lysates.
特記事項	<p>The Life Science industry has been in the grips of a reproducibility crisis for a number of years. Abcam is leading the way in addressing this with our range of recombinant monoclonal antibodies and knockout edited cell lines for gold-standard validation. Please check that this product meets your needs before purchasing.</p> <p>If you have any questions, special requirements or concerns, please send us an inquiry and/or contact our Support team ahead of purchase. Recommended alternatives for this product can be found below, along with publications, customer reviews and Q&As</p>

製品の特性

製品の状態	Liquid
保存方法	Shipped at 4°C. Upon delivery aliquot and store at -20°C. Avoid freeze / thaw cycles.
バッファー	pH: 6.8 Preservative: 0.09% Sodium azide Constituents: 0.1% BSA, Tris buffered saline
精製度	Immunogen affinity purified
特記事項 (精製)	ab95074 was affinity purified using an epitope specific to SCYL1 immobilized on solid support.
ポリ/モノ	ポリクローナル
アイソタイプ	IgG

アプリケーション

The Abpromise guarantee

Abpromise保証は、次のテスト済みアプリケーションにおけるab95074の使用に適用されます

アプリケーションノートには、推奨の開始希釈率がありますが、適切な希釈率につきましてはご検討ください。

アプリケーション	Abreviews	特記事項
WB	★★★★★ (1)	1/2000 - 1/10000. Predicted molecular weight: 90 kDa.
IP		Use at 2-5 µg/mg of lysate.

ターゲット情報

機能

Regulates COPI-mediated retrograde traffic. Has no detectable kinase activity in vitro. Isoform 6 acts as transcriptional activator. It binds to three different types of GC-rich DNA binding sites (box-A, -B and -C) in the beta-polymerase promoter region. It also binds to the TERT promoter region.

組織特異性

Ubiquitous.

配列類似性

Belongs to the protein kinase superfamily.
Contains 3 HEAT repeats.
Contains 1 protein kinase domain.

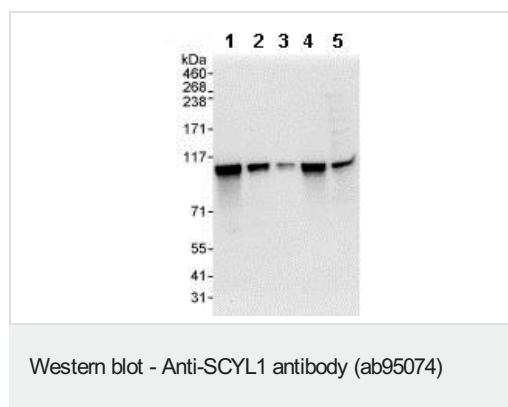
ドメイン

The protein kinase domain is predicted to be catalytically inactive.

細胞内局在

Nucleus; Cytoplasm > cytoskeleton > centrosome. Endoplasmic reticulum-Golgi intermediate compartment. Golgi apparatus > cis-Golgi network. Localized to the Endoplasmic reticulum-Golgi intermediate and cis-Golgi in an ARF1-independent manner; Cytoplasm. Cytoplasm > cytoskeleton > centrosome. Cytoplasmic during interphase and centrosomal during mitosis, it localizes to the centrosomes in a microtubule-independent manner and Cytoplasm. Cytoplasmic throughout the cell cycle.

画像



All lanes : Anti-SCYL1 antibody (ab95074) at 0.04 µg/ml

Lane 1 : HeLa whole cell lysate at 50 µg

Lane 2 : HeLa whole cell lysate at 15 µg

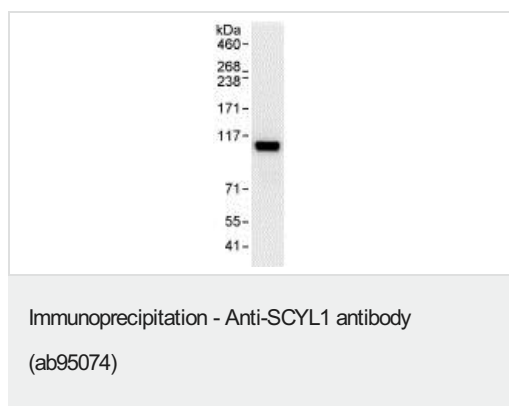
Lane 3 : HeLa whole cell lysate at 5 µg

Lane 4 : 293T whole cell lysate at 50 µg

Lane 5 : NIH3T3 whole cell lysate at 50 µg

Predicted band size: 90 kDa

Exposure time: 10 seconds



Detection of SCYL1 by Western Blot of Immunoprecipitate.
ab95074 at 1 µg/ml staining SCYL1 in HeLa whole cell lysate
immunoprecipitated using ab95074 at 3 µg/mg lysate (1 mg/IP; 20%
of IP loaded/lane).
Detection: Chemiluminescence with exposure time of 3 seconds.

Please note: All products are "FOR RESEARCH USE ONLY. NOT FOR USE IN DIAGNOSTIC PROCEDURES"

Our Abpromise to you: Quality guaranteed and expert technical support

- Replacement or refund for products not performing as stated on the datasheet
- Valid for 12 months from date of delivery
- Response to your inquiry within 24 hours
- We provide support in Chinese, English, French, German, Japanese and Spanish
- Extensive multi-media technical resources to help you
- We investigate all quality concerns to ensure our products perform to the highest standards

If the product does not perform as described on this datasheet, we will offer a refund or replacement. For full details of the Abpromise, please visit <https://www.abcam.co.jp/abpromise> or contact our technical team.

Terms and conditions

- Guarantee only valid for products bought direct from Abcam or one of our authorized distributors