

Anti-SCXA antibody ab58655

★★★★☆ [18 Abreviews](#) [51 References](#) [画像数 1](#)

製品の概要

製品名	Anti-SCXA antibody
製品の詳細	Rabbit polyclonal to SCXA
由来種	Rabbit
アプリケーション	適用あり: ELISA, ICC/IF, ICC, WB, IHC-M
種交差性	交差種: Mouse, Rat, Horse, Dog, Human
免疫原	Synthetic peptide corresponding to Human SCXA (N terminal).
特記事項	<p>The Life Science industry has been in the grips of a reproducibility crisis for a number of years. Abcam is leading the way in addressing this with our range of recombinant monoclonal antibodies and knockout edited cell lines for gold-standard validation. Please check that this product meets your needs before purchasing.</p> <p>If you have any questions, special requirements or concerns, please send us an inquiry and/or contact our Support team ahead of purchase. Recommended alternatives for this product can be found below, along with publications, customer reviews and Q&As</p>

製品の特性

製品の状態	Liquid
保存方法	Shipped at 4°C. Upon delivery aliquot and store at -20°C. Avoid freeze / thaw cycles.
バッファー	<p>pH: 7.2</p> <p>Preservative: 0.01% Sodium azide</p> <p>Constituents: PBS, 50% Glycerol</p>
精製度	Immunogen affinity purified
ポリ/モノ	ポリクローナル
アイソタイプ	IgG

アプリケーション

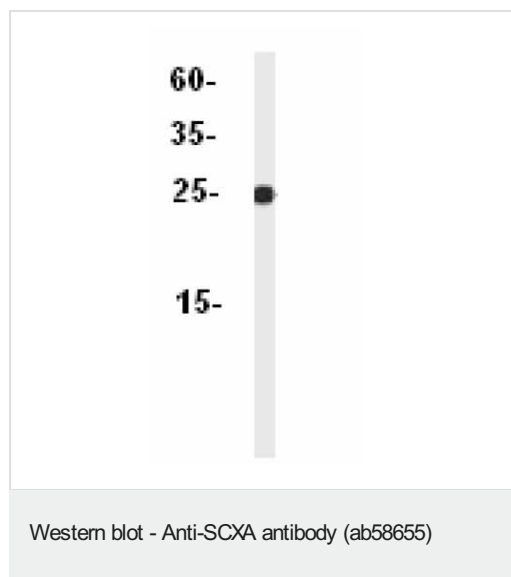
The Abpromise guarantee **Abpromise保証は、次のテスト済みアプリケーションにおけるab58655の使用に適用されます**
 アプリケーションノートには、推奨の開始希釈率がありますが、適切な希釈率につきましてはご検討ください。

アプリケーション	Abreviews	特記事項
ELISA		Use at an assay dependent concentration.
ICC/IF	★★★★★ (8)	Use at an assay dependent concentration.
ICC	★★★★★ (1)	Use at an assay dependent concentration. PubMed: 21412429
WB	★★★★★ (2)	Use at an assay dependent concentration. Predicted molecular weight: 22 kDa.
IHC-M		Use at an assay dependent concentration. PubMed: 21412429

ターゲット情報

機能	Plays an early essential role in mesoderm formation, as well as a later role in formation of somite-derived chondrogenic lineages.
配列類似性	Contains 1 basic helix-loop-helix (bHLH) domain.
細胞内局在	Nucleus.

画像



Anti-SCXA antibody (ab58655) at 1 µg/ml + Mouse heart tissue lysate

Predicted band size: 22 kDa

Please note: All products are "FOR RESEARCH USE ONLY. NOT FOR USE IN DIAGNOSTIC PROCEDURES"

Our Abpromise to you: Quality guaranteed and expert technical support

- Replacement or refund for products not performing as stated on the datasheet
- Valid for 12 months from date of delivery
- Response to your inquiry within 24 hours

- We provide support in Chinese, English, French, German, Japanese and Spanish
- Extensive multi-media technical resources to help you
- We investigate all quality concerns to ensure our products perform to the highest standards

If the product does not perform as described on this datasheet, we will offer a refund or replacement. For full details of the Abpromise, please visit <https://www.abcam.co.jp/abpromise> or contact our technical team.

Terms and conditions

- Guarantee only valid for products bought direct from Abcam or one of our authorized distributors