

Anti-SCRIBBLE antibody [EPR4140(2)] ab125080

KO 評価済 リコンビナント RabMAb

画像数 4

製品の概要

製品名	Anti-SCRIBBLE antibody [EPR4140(2)]
製品の詳細	Rabbit monoclonal [EPR4140(2)] to SCRIBBLE
由来種	Rabbit
アプリケーション	適用あり: WB, Flow Cyt (Intra) 適用なし: IHC-P or IP
種交差性	交差種: Human 非交差種: Mouse, Rat
免疫原	Synthetic peptide within Human SCRIBBLE aa 1550-1650 (C terminal). The exact sequence is proprietary.
ポジティブ・コントロール	293T, HeLa and MCF7 cell lysates; permeabilized 293T cells.
特記事項	This product is a recombinant monoclonal antibody, which offers several advantages including: <ul style="list-style-type: none"> - High batch-to-batch consistency and reproducibility - Improved sensitivity and specificity - Long-term security of supply - Animal-free production For more information see here . Our RabMAb [®] technology is a patented hybridoma-based technology for making rabbit monoclonal antibodies. For details on our patents, please refer to RabMAb[®] patents .

製品の特性

製品の状態	Liquid
保存方法	Shipped at 4°C. Store at -20°C. Stable for 12 months at -20°C.
バッファー	pH: 7.2 Preservative: 0.05% Sodium azide Constituents: 0.1% BSA, 40% Glycerol (glycerin, glycerine), 9.85% Tris glycine, 50% Tissue culture supernatant
精製度	Protein A purified
ポリ/モノ	モノクローナル
クローン名	EPR4140(2)

アプリケーション

The Abpromise guarantee **Abpromise保証は、** 次のテスト済みアプリケーションにおけるab125080の使用に適用されます
アプリケーションノートには、推奨の開始希釈率がありますが、適切な希釈率につきましてはご検討ください。

アプリケーション	Abreviews	特記事項
WB		1/1000 - 1/10000. Detects a band of approximately 250 kDa (predicted molecular weight: 175 kDa).
Flow Cyt (Intra)		1/100 - 1/500. ab172730 - Rabbit monoclonal IgG, is suitable for use as an isotype control with this antibody.

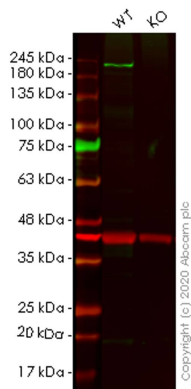
追加情報

Is unsuitable for IHC-P or IP.

ターゲット情報

機能	Scaffold protein involved in different aspects of polarized cells differentiation regulating epithelial and neuronal morphogenesis. Most probably functions in the establishment of apico-basal cell polarity. May function in cell proliferation regulating progression from G1 to S phase and as a positive regulator of apoptosis for instance during acinar morphogenesis of the mammary epithelium. May also function in cell migration and adhesion and hence regulate cell invasion through MAPK signaling. May play a role in exocytosis and in the targeting synaptic vesicles to synapses. Functions as an activator of Rac GTPase activity.
組織特異性	Expressed in kidney, skeletal muscles, liver, lung, breast, intestine, placenta and skin mainly in epithelial cells (at protein level).
配列類似性	Belongs to the LAP (LRR and PDZ) protein family. Contains 16 LRR (leucine-rich) repeats. Contains 4 PDZ (DHR) domains.
翻訳後修飾	Ubiquitinated; targeted for UBE3A-dependent multiubiquitination in the presence of high-risk HPV E6 proteins and degraded.
細胞内局在	Cell membrane. Cell junction > adherens junction. Cytoplasm. Targeting to cell-cell junctions which is CDH1-dependent is required for the pro-apoptotic activity. Localizes to neuronal post- and pre-synaptic regions.

画像



Western blot - Anti-SCRIBBLE antibody
[EPR4140(2)] (ab125080)

All lanes : Anti-SCRIBBLE antibody [EPR4140(2)] (ab125080) at 1/500 dilution

Lane 1 : Wild-type HeLa cell lysate

Lane 2 : SCRIB knockout HeLa cell lysate

Lysates/proteins at 20 µg per lane.

Secondary

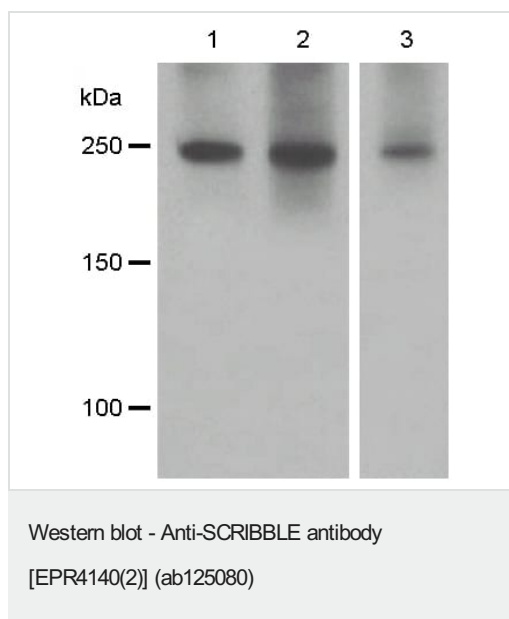
All lanes : Goat anti-Rabbit IgG H&L (IRDye® 800CW) preadsorbed ([ab216773](#)) at 1/10000 dilution

Predicted band size: 175 kDa

Observed band size: 240 kDa

Lanes 1-2: Merged signal (red and green). Green - ab125080 observed at 240 kDa. Red - loading control [ab8245](#) observed at 36 kDa.

ab125080 Anti-SCRIBBLE antibody [EPR4140(2)] was shown to specifically react with SCRIBBLE in wild-type HeLa cells. Loss of signal was observed when knockout cell line [ab265190](#) (knockout cell lysate [ab257660](#)) was used. Wild-type and SCRIBBLE knockout samples were subjected to SDS-PAGE. ab125080 and Anti-GAPDH antibody [6C5] - Loading Control ([ab8245](#)) were incubated overnight at 4°C at 1 in 500 dilution and 1 in 20000 dilution respectively. Blots were developed with Goat anti-Rabbit IgG H&L (IRDye® 800CW) preadsorbed ([ab216773](#)) and Goat anti-Mouse IgG H&L (IRDye® 680RD) preadsorbed ([ab216776](#)) secondary antibodies at 1 in 20000 dilution for 1 hour at room temperature before imaging.



All lanes : Anti-SCRIBBLE antibody [EPR4140(2)] (ab125080) at 1/1000 dilution

Lane 1 : 293T cell lysate

Lane 2 : HeLa cell lysate

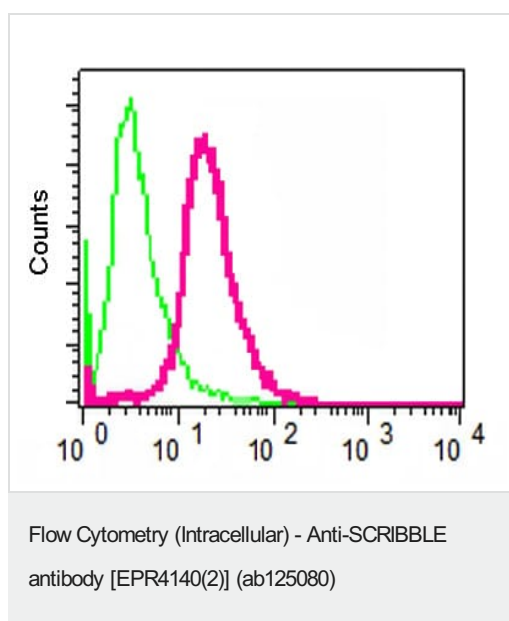
Lane 3 : MCF7 cell lysate

Lysates/proteins at 10 µg per lane.

Secondary

All lanes : Goat anti-Rabbit HRP at 1/2000 dilution

Predicted band size: 175 kDa



ab125080 at 1/100, staining SCRIBBLE in permeabilized 293T cells by intracellular flow cytometry (red), compared with a negative control Rabbit IgG antibody (green).

Why choose a recombinant antibody?



Research with confidence
Consistent and reproducible results



Long-term and scalable supply
Recombinant technology



Success from the first experiment
Confirmed specificity



Ethical standards compliant
Animal-free production

Anti-SCRIBBLE antibody [EPR4140(2)] (ab125080)

Please note: All products are "FOR RESEARCH USE ONLY. NOT FOR USE IN DIAGNOSTIC PROCEDURES"

Our Abpromise to you: Quality guaranteed and expert technical support

- Replacement or refund for products not performing as stated on the datasheet
- Valid for 12 months from date of delivery
- Response to your inquiry within 24 hours
- We provide support in Chinese, English, French, German, Japanese and Spanish
- Extensive multi-media technical resources to help you
- We investigate all quality concerns to ensure our products perform to the highest standards

If the product does not perform as described on this datasheet, we will offer a refund or replacement. For full details of the Abpromise, please visit <https://www.abcam.co.jp/abpromise> or contact our technical team.

Terms and conditions

- Guarantee only valid for products bought direct from Abcam or one of our authorized distributors