

Anti-SCOP antibody ab135957

2 References [画像数 1](#)

製品の概要

製品名	Anti-SCOP antibody
製品の詳細	Rabbit polyclonal to SCOP
由来種	Rabbit
アプリケーション	適用あり: WB
種交差性	交差種: Human 交差が予測される動物種: Mouse, Rat 
免疫原	Synthetic peptide corresponding to Human SCOP aa 1200-1250. Sequence: D NREALYGVFD GDRNVEVPYL LQCTMSDILA EELQKTKNEE EYMNVTFIWM <div style="text-align: right;">  Run BLAST with  Run BLAST with </div>
ポジティブ・コントロール	Y79 cell extract
特記事項	<p>The Life Science industry has been in the grips of a reproducibility crisis for a number of years. Abcam is leading the way in addressing this with our range of recombinant monoclonal antibodies and knockout edited cell lines for gold-standard validation. Please check that this product meets your needs before purchasing.</p> <p>If you have any questions, special requirements or concerns, please send us an inquiry and/or contact our Support team ahead of purchase. Recommended alternatives for this product can be found below, along with publications, customer reviews and Q&As</p>

製品の特性

製品の状態	Liquid
保存方法	Shipped at 4°C. Store at -20°C.
バッファー	pH: 7.40 Preservative: 0.02% Sodium azide Constituents: 49% PBS, 50% Glycerol (glycerin, glycerine), 0.88% Sodium chloride PBS without Mg ²⁺ and Ca ²⁺
精製度	Immunogen affinity purified
ポリ/モノ	ポリクローナル

アプリケーション

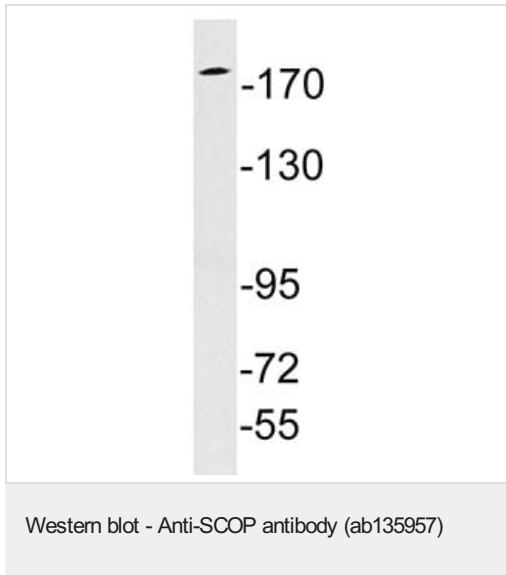
The Abpromise guarantee Abpromise保証は、次のテスト済みアプリケーションにおけるab135957の使用に適用されず
アプリケーションノートには、推奨の開始希釈率がありますが、適切な希釈率につきましてはご検討ください。

アプリケーション	Abreviews	特記事項
WB		1/500 - 1/1000. Predicted molecular weight: 185 kDa.

ターゲット情報

機能	Protein phosphatase that mediates dephosphorylation of 'Ser-473' of AKT1, 'Ser-660' of PRKCB isoform beta-II and 'Ser-657' of PRKCA. AKT1 regulates the balance between cell survival and apoptosis through a cascade that primarily alters the function of transcription factors that regulate pro- and antiapoptotic genes. Dephosphorylation of 'Ser-473' of AKT1 triggers apoptosis and suppression of tumor growth. Controls the phosphorylation of AKT2 and AKT3 more efficiently than that of AKT1. Dephosphorylation of PRKCA and PRKCB leads to their destabilization and degradation. Inhibits cancer cell proliferation and may act as a tumor suppressor. May act as a negative regulator of K-Ras signaling in membrane rafts.
組織特異性	In colorectal cancer tissue, expression is highest in the surface epithelium of normal colonic mucosa adjacent to the cancer tissue but is largely excluded from the crypt bases. Expression is lost or significantly decreased in 78% of tested tumors (at protein level). Ubiquitously expressed in non-cancerous tissues.
配列類似性	Contains 21 LRR (leucine-rich) repeats. Contains 1 PH domain. Contains 1 PP2C-like domain.
ドメイン	The PH domain is required for interaction with PRKCB and its dephosphorylation.
細胞内局在	Cytoplasm. Membrane. Nucleus. In colorectal cancer tissue, expression is concentrated at the lateral membrane of epithelial cells.

画像



Anti-SCOP antibody (ab135957) at 1/500 dilution + Y79 cell extract
at 30 µg

Predicted band size: 185 kDa

Please note: All products are "FOR RESEARCH USE ONLY. NOT FOR USE IN DIAGNOSTIC PROCEDURES"

Our Abpromise to you: Quality guaranteed and expert technical support

- Replacement or refund for products not performing as stated on the datasheet
- Valid for 12 months from date of delivery
- Response to your inquiry within 24 hours

- We provide support in Chinese, English, French, German, Japanese and Spanish
- Extensive multi-media technical resources to help you
- We investigate all quality concerns to ensure our products perform to the highest standards

If the product does not perform as described on this datasheet, we will offer a refund or replacement. For full details of the Abpromise, please visit <https://www.abcam.co.jp/abpromise> or contact our technical team.

Terms and conditions

- Guarantee only valid for products bought direct from Abcam or one of our authorized distributors