

Anti-SCO2 antibody ab115877

4 References [画像数 2](#)

製品の概要

製品名	Anti-SCO2 antibody
製品の詳細	Rabbit polyclonal to SCO2
由来種	Rabbit
アプリケーション	適用あり: IHC-P
種交差性	交差種: Human
免疫原	Synthetic peptide conjugated to KLH, corresponding to 19 amino acids from near the C-terminus of Human SCO2.
ポジティブ・コントロール	IHC-P: Human Lung, Respiratory Epithelium and Human Kidney tissues
特記事項	<p>The Life Science industry has been in the grips of a reproducibility crisis for a number of years. Abcam is leading the way in addressing this with our range of recombinant monoclonal antibodies and knockout edited cell lines for gold-standard validation. Please check that this product meets your needs before purchasing.</p> <p>If you have any questions, special requirements or concerns, please send us an inquiry and/or contact our Support team ahead of purchase. Recommended alternatives for this product can be found below, along with publications, customer reviews and Q&As</p>

製品の特性

製品の状態	Liquid
保存方法	Shipped at 4°C. Upon delivery aliquot and store at -20°C. Avoid freeze / thaw cycles.
バッファー	pH: 7.4 Preservative: 0.02% Sodium azide Constituent: 99% PBS
ポリ/モノ	ポリクローナル
アイソタイプ	IgG

アプリケーション

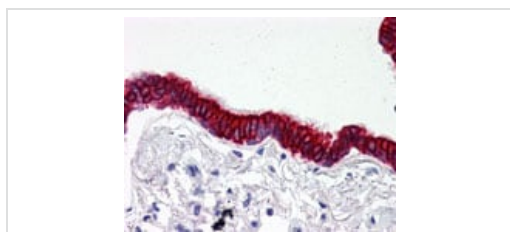
The Abpromise guarantee Abpromise保証は、次のテスト済みアプリケーションにおけるab115877の使用に適用されず
アプリケーションノートには、推奨の開始希釈率がありますが、適切な希釈率につきましてはご検討ください。

アプリケーション	Abreviews	特記事項
IHC-P		Use a concentration of 2.5 µg/ml. Perform heat mediated antigen retrieval with citrate buffer pH 6 before commencing with IHC staining protocol.

ターゲット情報

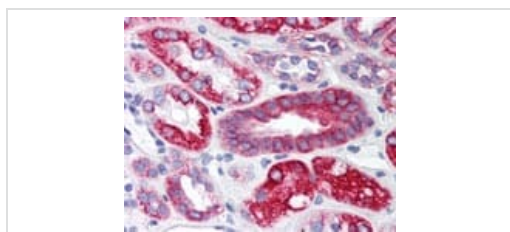
機能	Acts as a copper chaperone, transporting copper to the Cu(A) site on the cytochrome c oxidase subunit II (COX2).
組織特異性	Ubiquitous.
関連疾患	Defects in SCO2 are the cause of fatal infantile cardioencephalomyopathy with cytochrome c oxidase deficiency (FIC) [MIM:604377]. This disease is characterized by hypertrophic cardiomyopathy, lactic acidosis, and gliosis. Heart and skeletal muscle show reductions in cytochrome c oxidase (COX) activity, whereas liver and fibroblasts show mild COX deficiencies.
配列類似性	Belongs to the SCO1/2 family. Contains 1 thioredoxin domain.
細胞内局在	Mitochondrion.

画像



Immunohistochemistry (Formalin/PFA-fixed paraffin-embedded sections) - Anti-SCO2 antibody (ab115877)

Human Lung, Respiratory Epithelium (formalin-fixed, paraffin-embedded) stained with ab115877 at 2.5 µg/ml followed by biotinylated goat anti-rabbit IgG secondary antibody, alkaline phosphatase-streptavidin and chromogen.



Immunohistochemistry (Formalin/PFA-fixed paraffin-embedded sections) - Anti-SCO2 antibody (ab115877)

Human Kidney (formalin-fixed, paraffin-embedded) stained with ab115877 at 2.5 µg/ml followed by biotinylated goat anti-rabbit IgG secondary antibody, alkaline phosphatase-streptavidin and chromogen.

Our Abpromise to you: Quality guaranteed and expert technical support

- Replacement or refund for products not performing as stated on the datasheet
- Valid for 12 months from date of delivery
- Response to your inquiry within 24 hours

- We provide support in Chinese, English, French, German, Japanese and Spanish
- Extensive multi-media technical resources to help you
- We investigate all quality concerns to ensure our products perform to the highest standards

If the product does not perform as described on this datasheet, we will offer a refund or replacement. For full details of the Abpromise, please visit <https://www.abcam.co.jp/abpromise> or contact our technical team.

Terms and conditions

- Guarantee only valid for products bought direct from Abcam or one of our authorized distributors