


Anti-SCNN1B (phospho T615) antibody ab79172

1 References [画像数 3](#)

製品の概要

製品名	Anti-SCNN1B (phospho T615) antibody
製品の詳細	Rabbit polyclonal to SCNN1B (phospho T615)
由来種	Rabbit
アプリケーション	適用あり: WB, IHC-P, ICC/IF
種交差性	交差種: Human, African green monkey 交差が予測される動物種: Mouse, Rat 
免疫原	Synthesized phosphopeptide derived from human SCNN1B around the phosphorylation site of threonine 615 (P-G-T ^P -P-P).
ポジティブ・コントロール	Human brain tissue; extracts from HeLa cells; COS7 cells.
特記事項	<p>The Life Science industry has been in the grips of a reproducibility crisis for a number of years. Abcam is leading the way in addressing this with our range of recombinant monoclonal antibodies and knockout edited cell lines for gold-standard validation. Please check that this product meets your needs before purchasing.</p> <p>If you have any questions, special requirements or concerns, please send us an inquiry and/or contact our Support team ahead of purchase. Recommended alternatives for this product can be found below, along with publications, customer reviews and Q&As</p>

製品の特性

製品の状態	Liquid
保存方法	Shipped at 4°C. Upon delivery aliquot and store at -20°C. Avoid freeze / thaw cycles.
バッファー	pH: 7.40 Preservative: 0.02% Sodium azide Constituents: 50% Glycerol (glycerin, glycerine), 0.87% Sodium chloride, PBS Without Mg ²⁺ and Ca ²⁺
精製度	Immunogen affinity purified
特記事項(精製)	Purified from rabbit antiserum by affinity chromatography using epitope specific phosphopeptide. The antibody against non phosphopeptide was removed by chromatography using non phosphopeptide corresponding to the phosphorylation site.
ポリ/モノ	ポリクローナル

アプリケーション

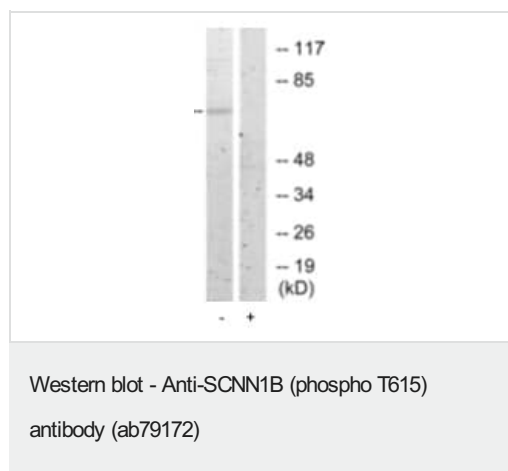
The Abpromise guarantee Abpromise保証は、次のテスト済みアプリケーションにおけるab79172の使用に適用されます
アプリケーションノートには、推奨の開始希釈率がありますが、適切な希釈率につきましてはご検討ください。

アプリケーション	Abreviews	特記事項
WB		1/500 - 1/1000. Predicted molecular weight: 73 kDa.
IHC-P		1/50 - 1/100.
ICC/IF		1/500 - 1/1000.

ターゲット情報

機能	Sodium permeable non-voltage-sensitive ion channel inhibited by the diuretic amiloride. Mediates the electrodiffusion of the luminal sodium (and water, which follows osmotically) through the apical membrane of epithelial cells. Controls the reabsorption of sodium in kidney, colon, lung and sweat glands. Also plays a role in taste perception.
関連疾患	Pseudohypoaldosteronism 1, autosomal recessive Liddle syndrome Bronchiectasis with or without elevated sweat chloride 1
配列類似性	Belongs to the amiloride-sensitive sodium channel (TC 1.A.6) family. SCNN1B subfamily.
翻訳後修飾	Phosphorylated on serine and threonine residues.
細胞内局在	Apical cell membrane. Apical membrane of epithelial cells.

画像



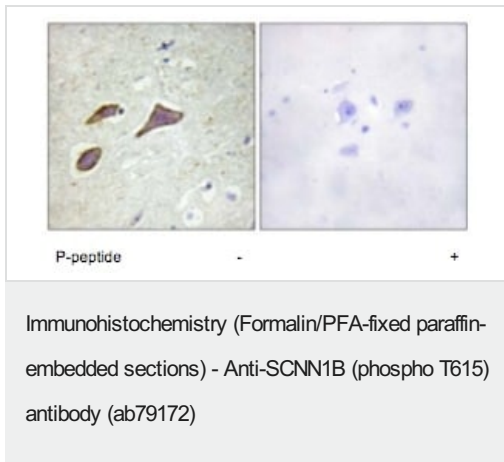
All lanes : Anti-SCNN1B (phospho T615) antibody (ab79172) at 1/500 dilution

Lane 1 : extracts from HeLa cells

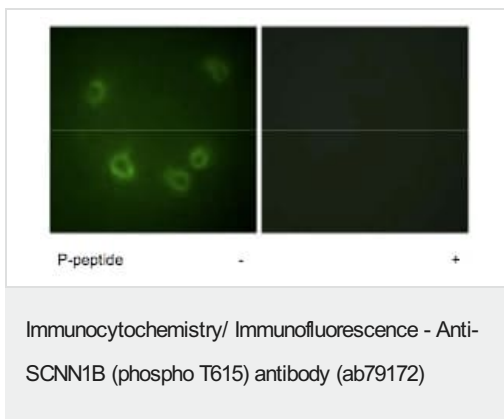
Lane 2 : extracts from HeLa cells with immunizing phosphopeptide at 10 µg

Lysates/proteins at 10 µg per lane.

Predicted band size: 73 kDa



Immunohistochemical analysis of SCNN1B in paraffin embedded human brain tissue using a 1/50 dilution of ab79172 in the presence (right) or absence (left) of the immunizing phosphopeptide.



Immunofluorescence analysis of SCNN1B in COS7 cells, using a 1/500 dilution of ab79172, in the presence (right) or absence (left) of the immunizing phosphopeptide.

Please note: All products are "FOR RESEARCH USE ONLY. NOT FOR USE IN DIAGNOSTIC PROCEDURES"

Our Abpromise to you: Quality guaranteed and expert technical support

- Replacement or refund for products not performing as stated on the datasheet
- Valid for 12 months from date of delivery
- Response to your inquiry within 24 hours
- We provide support in Chinese, English, French, German, Japanese and Spanish
- Extensive multi-media technical resources to help you
- We investigate all quality concerns to ensure our products perform to the highest standards

If the product does not perform as described on this datasheet, we will offer a refund or replacement. For full details of the Abpromise, please visit <https://www.abcam.co.jp/abpromise> or contact our technical team.

Terms and conditions

- Guarantee only valid for products bought direct from Abcam or one of our authorized distributors