

Anti-SCML2 antibody [SCMAD14A] ab51506

1 References [画像数 1](#)

製品の概要

製品名	Anti-SCML2 antibody [SCMAD14A]
製品の詳細	Mouse monoclonal [SCMAD14A] to SCML2
由来種	Mouse
アプリケーション	適用あり: WB
種交差性	交差種: Mouse, Rat, Human
免疫原	Recombinant fragment, C terminal. (Human)
ポジティブ・コントロール	HeLa Whole cell lysate, NIH3T3 whole cell lysate, and F2408 whole cell lysate.
特記事項	<p>The Life Science industry has been in the grips of a reproducibility crisis for a number of years. Abcam is leading the way in addressing this with our range of recombinant monoclonal antibodies and knockout edited cell lines for gold-standard validation. Please check that this product meets your needs before purchasing.</p> <p>If you have any questions, special requirements or concerns, please send us an inquiry and/or contact our Support team ahead of purchase. Recommended alternatives for this product can be found below, along with publications, customer reviews and Q&As</p>

製品の特性

製品の状態	Liquid
保存方法	Shipped at 4°C. Store at +4°C short term (1-2 weeks). Upon delivery aliquot. Store at -20°C long term.
バッファー	<p>pH: 7.40</p> <p>Preservative: 0.05% Sodium azide</p> <p>Constituents: 0.812% Sodium chloride, 0.0225% Potassium chloride, 0.0204% Monobasic dihydrogen potassium phosphate, 0.1136% Dibasic monohydrogen sodium phosphate, 1% BSA, PBS</p>
精製度	Protein G purified
特記事項 (精製)	ab51506 purified using protein G column chromatography from culture supernatant of hybridoma cultured in a medium containing bovine IgG-depleted (approximately 95%) fetal bovine serum.
ポリ/モノ	モノクローナル
クローン名	SCMAD14A

アプリケーション

The Abpromise guarantee

Abpromise保証は、次のテスト済みアプリケーションにおけるab51506の使用に適用されます

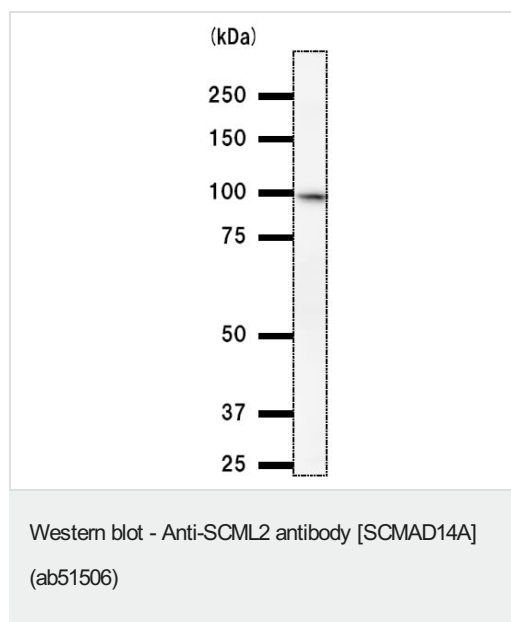
アプリケーションノートには、推奨の開始希釈率がありますが、適切な希釈率につきましてはご検討ください。

アプリケーション	Abreviews	特記事項
WB		1/200. Detects a band of approximately 100 kDa (predicted molecular weight: 77.3 kDa).

ターゲット情報

機能	Putative Polycomb group (PcG) protein. PcG proteins act by forming multiprotein complexes, which are required to maintain the transcriptionally repressive state of homeotic genes throughout development.
組織特異性	Highly expressed in placenta, thymus and testis. Detected at lower levels in brain, liver, skeletal muscle, pancreas and ovary.
配列類似性	Belongs to the SCM family. Contains 2 MBT repeats. Contains 1 SAM (sterile alpha motif) domain.
細胞内局在	Nucleus.

画像



Anti-SCML2 antibody [SCMAD14A] (ab51506) at 1/200 dilution +
HeLa whole cell lysate at 25 µg

Secondary

Mouse IgG antibody at 1/2500 dilution

Predicted band size: 77.3 kDa

Observed band size: 100 kDa

Same results obtained using NIH3T3 whole cell lysate, and F2408 whole cell lysate.

Please note: All products are "FOR RESEARCH USE ONLY. NOT FOR USE IN DIAGNOSTIC PROCEDURES"

Our Abpromise to you: Quality guaranteed and expert technical support

- Replacement or refund for products not performing as stated on the datasheet
- Valid for 12 months from date of delivery
- Response to your inquiry within 24 hours

- We provide support in Chinese, English, French, German, Japanese and Spanish
- Extensive multi-media technical resources to help you
- We investigate all quality concerns to ensure our products perform to the highest standards

If the product does not perform as described on this datasheet, we will offer a refund or replacement. For full details of the Abpromise, please visit <https://www.abcam.co.jp/abpromise> or contact our technical team.

Terms and conditions

- Guarantee only valid for products bought direct from Abcam or one of our authorized distributors