


### Anti-SCC112 antibody ab17961

画像数 1

#### 製品の概要

製品名	Anti-SCC112 antibody
製品の詳細	Rabbit polyclonal to SCC112
由来種	Rabbit
アプリケーション	適用あり: WB
種交差性	交差種: Human 交差が予測される動物種: Chimpanzee, Rhesus monkey, Gorilla, Orangutan 
免疫原	Synthetic peptide within Human SCC112 aa 1250-1350 (C terminal). The exact immunogen sequence used to generate this antibody is proprietary information. If additional detail on the immunogen is needed to determine the suitability of the antibody for your needs, please <b><u>contact</u></b> our Scientific Support team to discuss your requirements. Database link: <a href="#">Q29RF7</a>
ポジティブ・コントロール	WB: HeLa and HEK-293T whole cell lysates.
特記事項	<p>The Life Science industry has been in the grips of a reproducibility crisis for a number of years. Abcam is leading the way in addressing this with our range of recombinant monoclonal antibodies and knockout edited cell lines for gold-standard validation. Please check that this product meets your needs before purchasing.</p> <p>If you have any questions, special requirements or concerns, please send us an inquiry and/or contact our Support team ahead of purchase. Recommended alternatives for this product can be found below, along with publications, customer reviews and Q&amp;As</p>

#### 製品の特性

製品の状態	Liquid
保存方法	Shipped at 4°C. Upon delivery aliquot and store at -20°C. Avoid freeze / thaw cycles.
バッファー	pH: 7 Preservative: 0.1% Sodium azide Constituents: 0.021% PBS, 1.764% Sodium citrate, 1.815% Tris
精製度	Immunogen affinity purified
ポリ/モノ	ポリクローナル
アイソタイプ	IgG

## アプリケーション

### The Abpromise guarantee

Abpromise保証は、次のテスト済みアプリケーションにおけるab17961の使用に適用されます

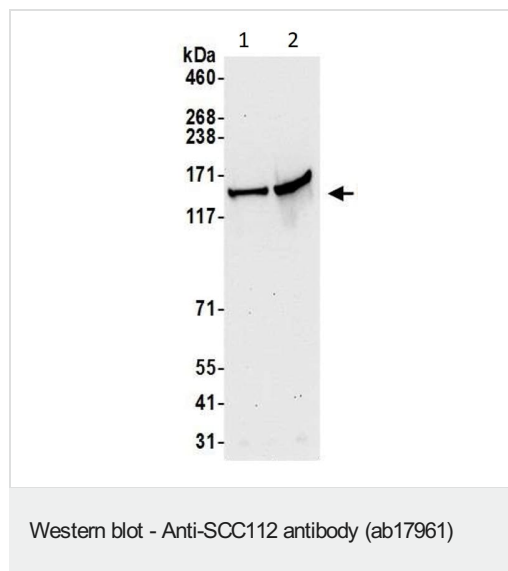
アプリケーションノートには、推奨の開始希釈率がありますが、適切な希釈率につきましてはご検討ください。

アプリケーション	Abreviews	特記事項
WB		1/10000 - 1/25000. Detects a band of approximately 145 kDa (predicted molecular weight: 150 kDa).

## ターゲット情報

機能	Probable regulator of sister chromatid cohesion in mitosis which may stabilize cohesin complex association with chromatin. May couple sister chromatid cohesion during mitosis to DNA replication. Cohesion ensures that chromosome partitioning is accurate in both meiotic and mitotic cells and plays an important role in DNA repair.
組織特異性	Highest level in colon. Low levels in lung, ovary, breast and kidney. Reduced level in renal tumor tissue. Isoform 2 is expressed in kidney.
配列類似性	Belongs to the PDS5 family. Contains 1 HEAT repeat.
発生段階	Cell cycle-regulated with highest level in G2 phase.
細胞内局在	Nucleus. Associated with chromatin through most of the cell cycle. Dissociates from chromatin in late prophase, reassociates during late telophase.

## 画像



**All lanes :** Anti-SCC112 antibody (ab17961) at 0.04 µg/ml

**Lane 1 :** HeLa (Human cervix adenocarcinoma epithelial cell)  
whole cell lysate

**Lane 2 :** HEK-293T (Human epithelial cell line from embryonic  
kidney transformed with large T antigen) whole cell lysate

Lysates/proteins at 50 µg per lane.

**Predicted band size:** 150 kDa

**Exposure time:** 30 seconds

**Please note:** All products are "FOR RESEARCH USE ONLY. NOT FOR USE IN DIAGNOSTIC PROCEDURES"

**Our Abpromise to you: Quality guaranteed and expert technical support**

- Replacement or refund for products not performing as stated on the datasheet
- Valid for 12 months from date of delivery
- Response to your inquiry within 24 hours
- We provide support in Chinese, English, French, German, Japanese and Spanish
- Extensive multi-media technical resources to help you
- We investigate all quality concerns to ensure our products perform to the highest standards

If the product does not perform as described on this datasheet, we will offer a refund or replacement. For full details of the Abpromise, please visit <https://www.abcam.co.jp/abpromise> or contact our technical team.

#### **Terms and conditions**

---

- Guarantee only valid for products bought direct from Abcam or one of our authorized distributors