

Anti-Scavenging Receptor SR-BI antibody ab106572

8 References [画像数 3](#)

製品の概要

製品名	Anti-Scavenging Receptor SR-BI antibody
製品の詳細	Rabbit polyclonal to Scavenging Receptor SR-BI
由来種	Rabbit
アプリケーション	適用あり: ICC/IF, WB, IHC-P
種交差性	交差種: Human
免疫原	A 15 amino acid peptide near the amino terminus of Human Scavenging Receptor SR-BI.
ポジティブ・コントロール	WB: Human spleen tissue lysate IHC-P: Human spleen tissue
特記事項	<p>The Life Science industry has been in the grips of a reproducibility crisis for a number of years. Abcam is leading the way in addressing this with our range of recombinant monoclonal antibodies and knockout edited cell lines for gold-standard validation. Please check that this product meets your needs before purchasing.</p> <p>If you have any questions, special requirements or concerns, please send us an inquiry and/or contact our Support team ahead of purchase. Recommended alternatives for this product can be found below, along with publications, customer reviews and Q&As</p>

製品の特性

製品の状態	Liquid
保存方法	Shipped at 4°C. Store at 4°C (stable for up to 12 months).
バッファー	pH: 7.2 Preservative: 0.02% Sodium azide Constituent: PBS
精製度	Immunogen affinity purified
ポリ/モノ	ポリクローナル
アイソタイプ	IgG

アプリケーション

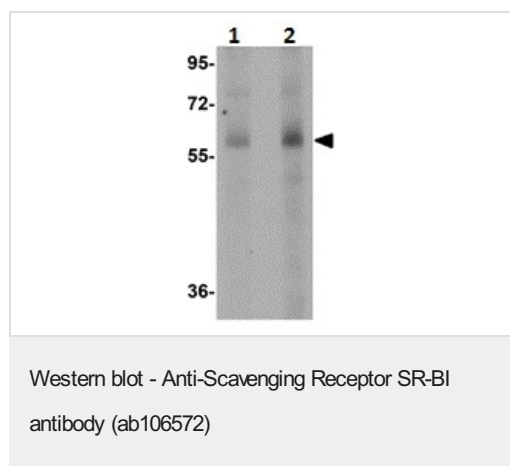
The Abpromise guarantee **Abpromise保証は、次のテスト済みアプリケーションにおけるab106572の使用に適用されます**
アプリケーションノートには、推奨の開始希釈率がありますが、適切な希釈率につきましてはご検討ください。

アプリケーション	Abreviews	特記事項
ICC/IF		Use a concentration of 20 µg/ml.
WB		Use a concentration of 1 - 2 µg/ml. Predicted molecular weight: 61 kDa.
IHC-P		Use a concentration of 2.5 µg/ml.

ターゲット情報

機能	Receptor for different ligands such as phospholipids, cholesterol ester, lipoproteins, phosphatidylserine and apoptotic cells. Probable receptor for HDL, located in particular region of the plasma membrane, called caveolae. Facilitates the flux of free and esterified cholesterol between the cell surface and extracellular donors and acceptors, such as HDL and to a lesser extent, apoB-containing lipoproteins and modified lipoproteins. Probably involved in the phagocytosis of apoptotic cells, via its phosphatidylserine binding activity. Receptor for hepatitis C virus glycoprotein E2. Binding between SCARB1 and E2 was found to be independent of the genotype of the viral isolate. Plays an important role in the uptake of HDL cholesteryl ester.
組織特異性	Widely expressed.
配列類似性	Belongs to the CD36 family.
翻訳後修飾	N-glycosylated.
細胞内局在	Cell membrane. Membrane > caveola. Predominantly localized to cholesterol and sphingomyelin-enriched domains within the plasma membrane, called caveolae.

画像



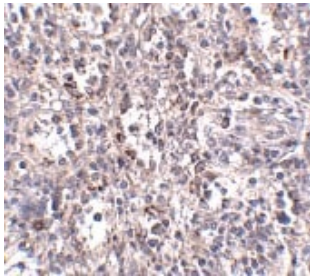
Lane 1 : Anti-Scavenging Receptor SR-BI antibody (ab106572) at 1 µg/ml

Lane 2 : Anti-Scavenging Receptor SR-BI antibody (ab106572) at 2 µg/ml

All lanes : Human spleen tissue lysate

Lysates/proteins at 15 µg per lane.

Predicted band size: 61 kDa



Immunohistochemical analysis of Scavenging Receptor SR-BI in paraffin embedded Human spleen tissue sections, using ab106572 at 2.5 µg/ml.

Immunohistochemistry (Formalin/PFA-fixed paraffin-embedded sections) - Anti-Scavenging Receptor SR-BI antibody (ab106572)

Immunocytochemistry/ Immunofluorescence - Anti-Scavenging Receptor SR-BI antibody (ab106572)

Immunofluorescence of SCARB1 in Human Spleen cells using ab106572 at 20 µg/ml.

Please note: All products are "FOR RESEARCH USE ONLY. NOT FOR USE IN DIAGNOSTIC PROCEDURES"

Our Abpromise to you: Quality guaranteed and expert technical support

- Replacement or refund for products not performing as stated on the datasheet
- Valid for 12 months from date of delivery
- Response to your inquiry within 24 hours
- We provide support in Chinese, English, French, German, Japanese and Spanish
- Extensive multi-media technical resources to help you
- We investigate all quality concerns to ensure our products perform to the highest standards

If the product does not perform as described on this datasheet, we will offer a refund or replacement. For full details of the Abpromise, please visit <https://www.abcam.co.jp/abpromise> or contact our technical team.

Terms and conditions

- Guarantee only valid for products bought direct from Abcam or one of our authorized distributors