




Anti-SCAMP1 antibody ab3430

2 References [画像数 3](#)

製品の概要

製品名	Anti-SCAMP1 antibody
製品の詳細	Rabbit polyclonal to SCAMP1
由来種	Rabbit
アプリケーション	適用あり: WB
種交差性	交差種: Mouse, Rat, Human 交差が予測される動物種: Pig 
免疫原	Synthetic peptide corresponding to Human SCAMP1 aa 1-17. Sequence: MSDFDSNPFADPDLNNP (Peptide available as ab4969) <div>  Run BLAST with  Run BLAST with </div>
ポジティブ・コントロール	WB: U-87MG, Neuro-2a, SH-SY5Y, SK-N-AS, T98G, IMR-32, Rat brain tissue and Wild-type HeLa cell lysate.
特記事項	<p>The Life Science industry has been in the grips of a reproducibility crisis for a number of years. Abcam is leading the way in addressing this with our range of recombinant monoclonal antibodies and knockout edited cell lines for gold-standard validation. Please check that this product meets your needs before purchasing.</p> <p>If you have any questions, special requirements or concerns, please send us an inquiry and/or contact our Support team ahead of purchase. Recommended alternatives for this product can be found below, along with publications, customer reviews and Q&As</p>

製品の特性

製品の状態	Liquid
保存方法	Shipped at 4°C. Store at +4°C short term (1-2 weeks). Upon delivery aliquot. Store at -20°C or -80°C. Avoid freeze / thaw cycle.
バッファー	Constituents: 0.1% BSA, 99% PBS
精製度	Immunogen affinity purified
ポリ/モノ	ポリクローナル

アプリケーション

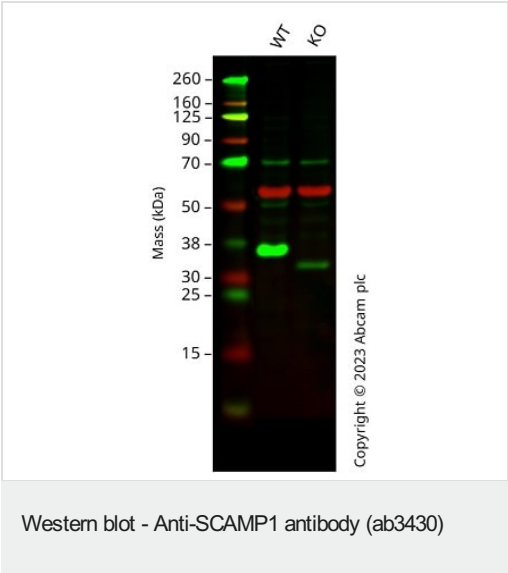
The Abpromise guarantee **Abpromise保証は、** 次のテスト済みアプリケーションにおけるab3430の使用に適用されます
アプリケーションノートには、推奨の開始希釈率がありますが、適切な希釈率につきましてはご検討ください。

アプリケーション	Abreviews	特記事項
WB		Use a concentration of 1 - 2 µg/ml. Detects a band of approximately 31 kDa (predicted molecular weight: 38 kDa). By Western blot, this antibody detects an ~31 kDa protein representing SCAMP 1 rat brain homogenate.

ターゲット情報

機能	Functions in post-Golgi recycling pathways. Acts as a recycling carrier to the cell surface.
組織特異性	Widely expressed, with highest expression in brain.
配列類似性	Belongs to the SCAMP family.
細胞内局在	Golgi apparatus > trans-Golgi network membrane. Recycling endosome membrane.

画像



All lanes : Anti-SCAMP1 antibody (ab3430) at 1 µg/ml

Lane 1 : Wild-type HeLa cell lysate
Lane 2 : SCAMP1 knockout HeLa cell lysate

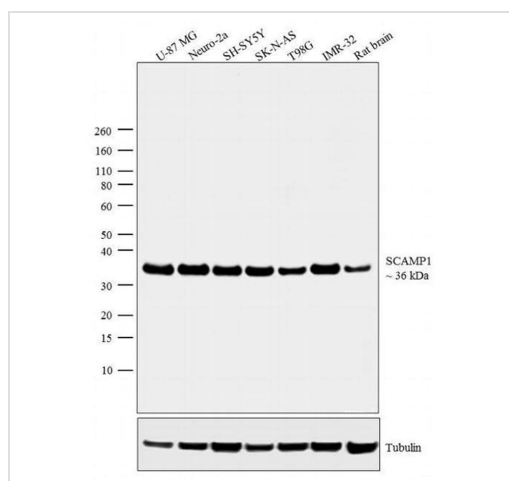
Lysates/proteins at 20 µg per lane.

Predicted band size: 38 kDa
Observed band size: 36 kDa

Lanes 1 - 2: Merged signal (red and green). Green - ab3430 observed at 36 kDa. Red - loading control, **ab7291** (Mouse anti-Alpha Tubulin [DM1A]) observed at 55 kDa.

ab3430 was shown to react with SCAMP1 in wild-type HeLa cells in western blot. The bands observed in SCAMP1 knockout cell line **ab265567** (SCAMP1 knockout cell lysate **ab258184**) below 36 kDa may represent truncated forms and cleaved fragments. This has not been investigated further. HeLa wild-type and SCAMP1

knockout cell lysates were subjected to SDS-PAGE. Membranes were blocked in fluorescent western blot (TBS-based) blocking solution before incubation with ab3430 and **ab7291** (Mouse anti-Alpha Tubulin [DM1A]) overnight at 4°C at 1 µg/ml and a 1/20000 dilution respectively. Blots were incubated with Goat anti-Rabbit IgG H&L (IRDye® 800CW) preabsorbed (**ab216773**) and Goat anti-Mouse IgG H&L (IRDye® 680RD) preabsorbed (**ab216776**) secondary antibodies at 1/20000 dilution for 1 h at room temperature before imaging.



Western blot - Anti-SCAMP1 antibody (ab3430)

All lanes : Anti-SCAMP1 antibody (ab3430) at 2 µg/ml

Lane 1 : U-87MG (Human primary glioblastoma cell line) lysate

Lane 2 : Neuro-2a (Mouse brain) lysate

Lane 3 : SH-SY5Y (Human derived cell line) lysate

Lane 4 : SK-N-AS (Human neuroblastoma cell line) lysate

Lane 5 : T98G (Glioblastoma cell line) lysate

Lane 6 : IMR-32 (Human neuroblastoma cell line) lysate

Lane 7 : Rat brain tissue

Lysates/proteins at 30 µg per lane.

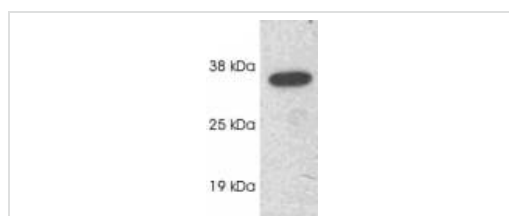
Secondary

All lanes : Goat anti-Rabbit IgG (H+L), HRP conjugate at 1/4000 dilution

Predicted band size: 38 kDa

Observed band size: 36 kDa

Blocking buffer: 5% Milk.



Western blot - Anti-SCAMP1 antibody (ab3430)

Western blot detection of SCAMP1 on rat brain extract using ab3430.

Please note: All products are "FOR RESEARCH USE ONLY. NOT FOR USE IN DIAGNOSTIC PROCEDURES"

Our Abpromise to you: Quality guaranteed and expert technical support

- Replacement or refund for products not performing as stated on the datasheet
- Valid for 12 months from date of delivery
- Response to your inquiry within 24 hours

- We provide support in Chinese, English, French, German, Japanese and Spanish
- Extensive multi-media technical resources to help you
- We investigate all quality concerns to ensure our products perform to the highest standards

If the product does not perform as described on this datasheet, we will offer a refund or replacement. For full details of the Abpromise, please visit <https://www.abcam.co.jp/abpromise> or contact our technical team.

Terms and conditions

- Guarantee only valid for products bought direct from Abcam or one of our authorized distributors