


Anti-SAT1 antibody ab105220

★★★★★ [1 Abreviews](#) [7 References](#) [画像数 1](#)

製品の概要

製品名	Anti-SAT1 antibody
製品の詳細	Rabbit polyclonal to SAT1
由来種	Rabbit
アプリケーション	適用あり: WB
種交差性	交差種: Human 交差が予測される動物種: Mouse, Rat, Rabbit, Cow, Pig, Macaque monkey, Gorilla, Chinese hamster 
免疫原	Synthetic peptide corresponding to Human SAT1 aa 100 to the C-terminus conjugated to keyhole limpet haemocyanin. (Peptide available as ab127967)
ポジティブ・コントロール	Recombinant Human SAT1 protein (ab87666) can be used as a positive control in WB. This antibody gave a positive signal in Human Adipose tissue lysate.
特記事項	<p>The Life Science industry has been in the grips of a reproducibility crisis for a number of years. Abcam is leading the way in addressing this with our range of recombinant monoclonal antibodies and knockout edited cell lines for gold-standard validation. Please check that this product meets your needs before purchasing.</p> <p>If you have any questions, special requirements or concerns, please send us an inquiry and/or contact our Support team ahead of purchase. Recommended alternatives for this product can be found below, along with publications, customer reviews and Q&As</p>

製品の特性

製品の状態	Liquid
保存方法	Shipped at 4°C. Store at +4°C short term (1-2 weeks). Upon delivery aliquot. Store at -20°C or -80°C. Avoid freeze / thaw cycle.
バッファー	pH: 7.40 Preservative: 0.02% Sodium azide Constituents: 1% BSA, PBS Batches of this product that have a concentration < 1mg/ml may have BSA added as a stabilising agent. If you would like information about the formulation of a specific lot, please contact our scientific support team who will be happy to help.

精製度	Immunogen affinity purified
ポリ/モノ	ポリクローナル
アイソタイプ	IgG

アプリケーション

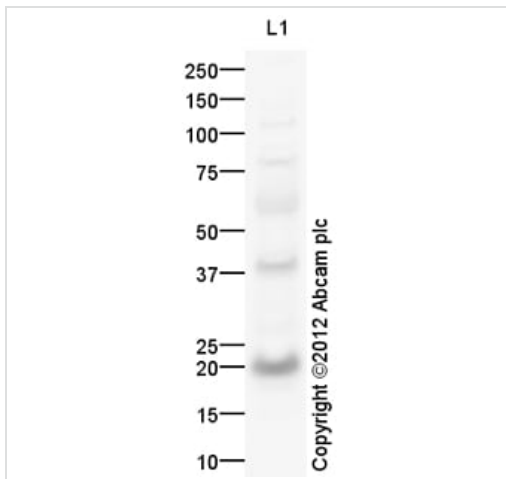
The Abpromise guarantee **Abpromise保証は、** 次のテスト済みアプリケーションにおけるab105220の使用に適用されます
アプリケーションノートには、推奨の開始希釈率がありますが、適切な希釈率につきましてはご検討ください。

アプリケーション	Abreviews	特記事項
WB		Use a concentration of 1 µg/ml. Detects a band of approximately 20 kDa (predicted molecular weight: 20 kDa).

ターゲット情報

機能	Enzyme which catalyzes the acetylation of polyamines. Substrate specificity: norspermidine = spermidine >> spermine > N(1)-acetylspermine > putrescine. This highly regulated enzyme allows a fine attenuation of the intracellular concentration of polyamines. Also involved in the regulation of polyamine transport out of cells. Acts on 1,3-diaminopropane, 1,5-diaminopentane, putrescine, spermidine (forming N(1)- and N(8)-acetylspermidine), spermine, N(1)-acetylspermidine and N(8)-acetylspermidine.
パスウェイ	Amine and polyamine degradation; putrescine degradation; N-acetylputrescine from putrescine: step 1/1.
関連疾患	Keratosis follicularis spinulosa decalvans X-linked
配列類似性	Belongs to the acetyltransferase family. Contains 1 N-acetyltransferase domain.
細胞内局在	Cytoplasm.

画像



Western blot - Anti-SAT1 antibody (ab105220)

Anti-SAT1 antibody (ab105220) at 1 µg/ml + Human adipose normal tissue lysate - total protein (**ab28980**) at 25 µg

Secondary

Goat Anti-Rabbit IgG H&L (HRP) preadsorbed (**ab97080**) at 1/5000 dilution

Developed using the ECL technique.

Performed under reducing conditions.

Predicted band size: 20 kDa

Observed band size: 20 kDa

Additional bands at: 110 kDa, 39 kDa, 60 kDa, 78 kDa. We are unsure as to the identity of these extra bands.

Exposure time: 12 minutes

Please note: All products are "FOR RESEARCH USE ONLY. NOT FOR USE IN DIAGNOSTIC PROCEDURES"

Our Abpromise to you: Quality guaranteed and expert technical support

- Replacement or refund for products not performing as stated on the datasheet
- Valid for 12 months from date of delivery
- Response to your inquiry within 24 hours
- We provide support in Chinese, English, French, German, Japanese and Spanish
- Extensive multi-media technical resources to help you
- We investigate all quality concerns to ensure our products perform to the highest standards

If the product does not perform as described on this datasheet, we will offer a refund or replacement. For full details of the Abpromise, please visit <https://www.abcam.co.jp/abpromise> or contact our technical team.

Terms and conditions

- Guarantee only valid for products bought direct from Abcam or one of our authorized distributors