


Anti-SASS6 antibody ab85993

画像数 2

製品の概要

製品名	Anti-SASS6 antibody
製品の詳細	Rabbit polyclonal to SASS6
由来種	Rabbit
アプリケーション	適用あり: WB, IP
種交差性	交差種: Human 交差が予測される動物種: Chimpanzee, Rhesus monkey, Gorilla, Chinese hamster, Elephant 
免疫原	Synthetic peptide corresponding to Human SASS6 aa 600-700. Database link: Q6UVJ0
ポジティブ・コントロール	HeLa and 293T whole cell lysates.
特記事項	<p>The Life Science industry has been in the grips of a reproducibility crisis for a number of years. Abcam is leading the way in addressing this with our range of recombinant monoclonal antibodies and knockout edited cell lines for gold-standard validation. Please check that this product meets your needs before purchasing.</p> <p>If you have any questions, special requirements or concerns, please send us an inquiry and/or contact our Support team ahead of purchase. Recommended alternatives for this product can be found below, along with publications, customer reviews and Q&As</p>

製品の特性

製品の状態	Liquid
保存方法	Shipped at 4°C. Upon delivery aliquot and store at -20°C. Avoid freeze / thaw cycles.
バッファー	pH: 7 Preservative: 0.09% Sodium azide Constituent: Tris citrate/phosphate
精製度	Immunogen affinity purified
ポリ/モノ	ポリクローナル
アイソタイプ	IgG

アプリケーション

The Abpromise guarantee Abpromise保証は、 次のテスト済みアプリケーションにおけるab85993の使用に適用されます
 アプリケーションノートには、推奨の開始希釈率がありますが、適切な希釈率につきましてはご検討ください。

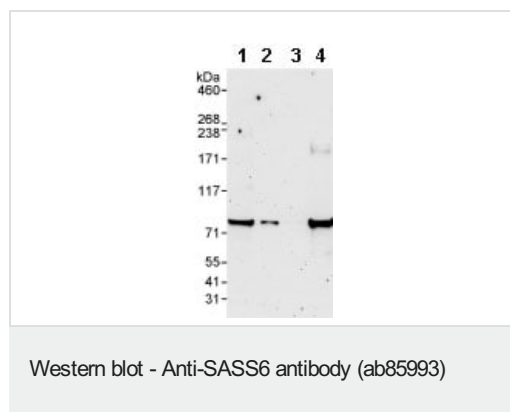
アプリケーション	Abreviews	特記事項
WB		1/2000 - 1/10000. Detects a band of approximately 74 kDa (predicted molecular weight: 74 kDa).
IP		Use at 2-5 µg/mg of lysate.

ターゲット情報

関連性 SASS6 (Spindle assembly abnormal protein 6 homolog) is required for centrosome duplication. It functions to ensure that each centriole seeds the formation of a single procentriole per cell cycle. Overexpression results in excess foci bearing centriolar markers.

細胞内局在 Cytoplasm; cytoskeleton; centrosome. Cytoplasm; cytoskeleton; centrosome; centriole. Note: Component of the centrosome. Associated only transiently with nascent procentrioles during centriole biogenesis.

画像



All lanes : Anti-SASS6 antibody (ab85993) at 0.1 µg/ml

Lane 1 : HeLa whole cell lysate at 50 µg

Lane 2 : HeLa whole cell lysate at 15 µg

Lane 3 : HeLa whole cell lysate at 5 µg

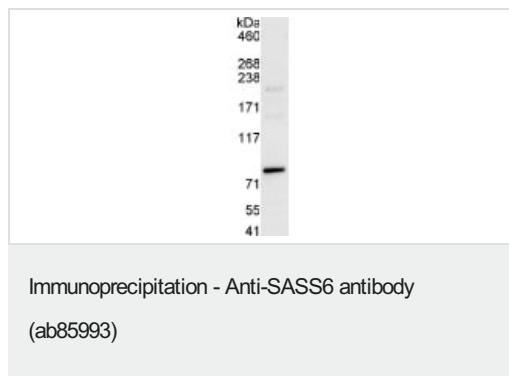
Lane 4 : 293T whole cell lysate at 50 µg

Developed using the ECL technique.

Predicted band size: 74 kDa

Observed band size: 74 kDa

Exposure time: 3 minutes



Detection of Human SASS6 in Immunoprecipitates of Whole cell lysate from HeLa cells (1 mg for IP, 20% of IP loaded) using ab85993 at 3 µg/mg lysate for IP and at 1 µg/ml for subsequent Western blot detection. Detection: Chemiluminescence with an exposure time of 30 seconds.

Please note: All products are "FOR RESEARCH USE ONLY. NOT FOR USE IN DIAGNOSTIC PROCEDURES"

Our Abpromise to you: Quality guaranteed and expert technical support

- Replacement or refund for products not performing as stated on the datasheet
- Valid for 12 months from date of delivery
- Response to your inquiry within 24 hours
- We provide support in Chinese, English, French, German, Japanese and Spanish
- Extensive multi-media technical resources to help you
- We investigate all quality concerns to ensure our products perform to the highest standards

If the product does not perform as described on this datasheet, we will offer a refund or replacement. For full details of the Abpromise, please visit <https://www.abcam.co.jp/abpromise> or contact our technical team.

Terms and conditions

- Guarantee only valid for products bought direct from Abcam or one of our authorized distributors