

Anti-SASH1 antibody ab111901

画像数 2

製品の概要

製品名	Anti-SASH1 antibody
製品の詳細	Rabbit polyclonal to SASH1
由来種	Rabbit
アプリケーション	適用あり: IHC-P
種交差性	交差種: Human 交差が予測される動物種: Gorilla 
免疫原	Synthetic peptide, corresponding to a region within internal sequence amino acids 750-800 of Human SASH1 (NP_056093.3).
ポジティブ・コントロール	IHC: Human Breast Carcinoma and Non-Small Cell Lung Cancer tissues.
特記事項	<p>The Life Science industry has been in the grips of a reproducibility crisis for a number of years. Abcam is leading the way in addressing this with our range of recombinant monoclonal antibodies and knockout edited cell lines for gold-standard validation. Please check that this product meets your needs before purchasing.</p> <p>If you have any questions, special requirements or concerns, please send us an inquiry and/or contact our Support team ahead of purchase. Recommended alternatives for this product can be found below, along with publications, customer reviews and Q&As</p>

製品の特性

製品の状態	Liquid
保存方法	Shipped at 4°C. Upon delivery aliquot and store at -20°C. Avoid freeze / thaw cycles.
バッファー	pH: 6.8 Preservative: 0.09% Sodium azide Constituents: 99% Tris buffered saline, 0.1% BSA
精製度	Immunogen affinity purified
特記事項(精製)	ab111901 is affinity purified using an epitope specific to SASH1 immobilized on solid support.
ポリ/モノ	ポリクローナル
アイソタイプ	IgG

アプリケーション

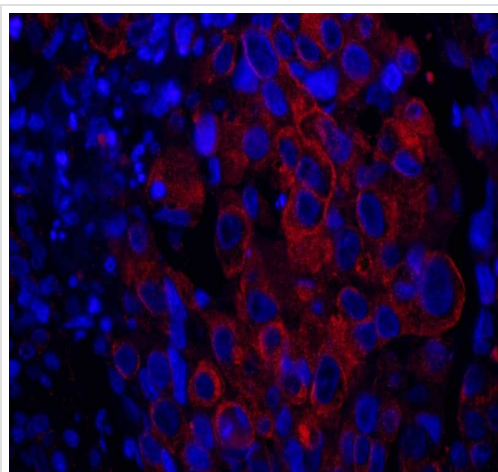
The Abpromise guarantee **Abpromise保証は、** 次のテスト済みアプリケーションにおけるab111901の使用に適用されず
 アプリケーションノートには、推奨の開始希釈率がありますが、適切な希釈率につきましてはご検討ください。

アプリケーション	Abreviews	特記事項
IHC-P		1/100 - 1/500. Perform heat mediated antigen retrieval with citrate buffer pH 6 before commencing with IHC staining protocol.

ターゲット情報

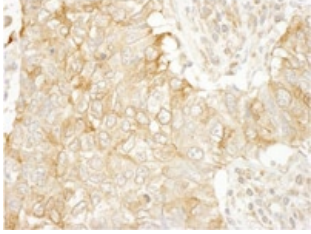
機能	May have a role in a signaling pathway. Could act as a tumor suppressor.
組織特異性	Expressed ubiquitously, with highest levels in lung, placenta, spleen and thymus. Down-regulated in the majority (74%) of breast tumors in comparison with corresponding normal breast epithelial tissues.
配列類似性	Contains 2 SAM (sterile alpha motif) domains. Contains 1 SH3 domain.

画像



Immunohistochemistry (Formalin/PFA-fixed paraffin-embedded sections) analysis of human breast carcinoma tissue labelling SASH1 with ab111901 at 1/100 dilution, and detection antibody Red fluorescent goat anti-rabbit IgG-heavy and light chain cross-adsorbed Antibody DyLight® 594 Conjugated at 1/100 dilution. Heat mediated antigen retrieval performed with citrate buffer pH 6 before commencing with IHC staining protocol.

Immunohistochemistry (Formalin/PFA-fixed paraffin-embedded sections) - Anti-SASH1 antibody (ab111901)



ab111901 at 1/250 dilution staining SASH1 in Formalin-fixed, Paraffin-embedded Human lung carcinoma tissue by Immunohistochemistry. Detection: DAB staining

Immunohistochemistry (Formalin/PFA-fixed paraffin-embedded sections) - Anti-SASH1 antibody (ab111901)

Please note: All products are "FOR RESEARCH USE ONLY. NOT FOR USE IN DIAGNOSTIC PROCEDURES"

Our Abpromise to you: Quality guaranteed and expert technical support

- Replacement or refund for products not performing as stated on the datasheet
- Valid for 12 months from date of delivery
- Response to your inquiry within 24 hours
- We provide support in Chinese, English, French, German, Japanese and Spanish
- Extensive multi-media technical resources to help you
- We investigate all quality concerns to ensure our products perform to the highest standards

If the product does not perform as described on this datasheet, we will offer a refund or replacement. For full details of the Abpromise, please visit <https://www.abcam.co.jp/abpromise> or contact our technical team.

Terms and conditions

- Guarantee only valid for products bought direct from Abcam or one of our authorized distributors