

Anti-SARS Envelope Protein antibody - Coronavirus ab22055

★★★★★ [1 Abreviews](#) [画像数 1](#)

製品の概要

製品名	Anti-SARS Envelope Protein antibody - Coronavirus
製品の詳細	Rabbit polyclonal to SARS Envelope Protein - Coronavirus
由来種	Rabbit
アプリケーション	適用あり: WB
種交差性	交差種: SARS-CoV
免疫原	Synthetic peptide corresponding to SARS Envelope Protein aa 59-70. Sequence: YSRVKNLNSSEG

[Run BLAST with](#)

[Run BLAST with](#)

ポジティブ・コントロール WB: Recombinant fusion protein

特記事項 **Applications overview**

Tick: Tested and Guaranteed to work X: Will not work —: No data Reviews: Customers have been successful and shared their AbReview

	WB	IHC	ICC/IF	Flow Cyt	ELISA	IP
SARS-CoV	✓	—	—	—	—	—
SARS-CoV2	—	—	Reviews ①	—	—	—

The Life Science industry has been in the grips of a reproducibility crisis for a number of years. Abcam is leading the way in addressing this with our range of recombinant monoclonal antibodies and knockout edited cell lines for gold-standard validation. Please check that this product meets your needs before purchasing.

If you have any questions, special requirements or concerns, please send us an inquiry and/or contact our Support team ahead of purchase. Recommended alternatives for this product can be found below, along with publications, customer reviews and Q&As

製品の特性

製品の状態	Liquid
保存方法	Shipped at 4°C. Store at +4°C short term (1-2 weeks). Upon delivery aliquot. Store at -20°C. Avoid freeze / thaw cycle.

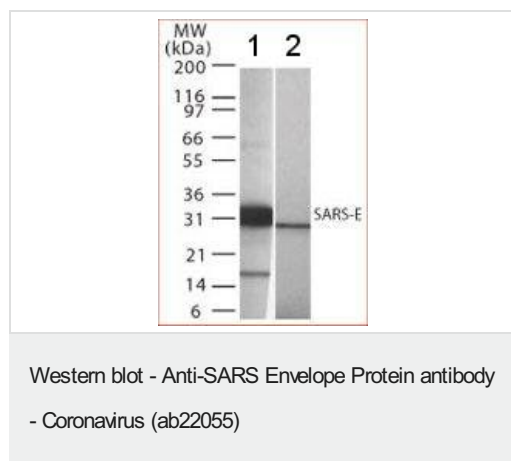
バッファー	pH: 7.4 Preservative: 0.05% Sodium azide Constituents: PBS, 0.2% Gelatin
精製度	Protein G purified
ポリ/モノ	ポリクローナル
アイソタイプ	IgG

アプリケーション

The Abpromise guarantee Abpromise保証は、次のテスト済みアプリケーションにおけるab22055の使用に適用されます
アプリケーションノートには、推奨の開始希釈率がありますが、適切な希釈率につきましてはご確認ください。

アプリケーション	Abreviews	特記事項
WB		Use a concentration of 1 - 3 µg/ml. Detects a band of approximately 32 kDa.

画像



Lane 1 : Anti-SARS Envelope Protein antibody - Coronavirus (ab22055) at 1 µg/ml (Recombinant fusion protein containing amino acids 59-70)

Lane 2 : Anti-SARS Envelope Protein antibody - Coronavirus (ab22055) at 1 µg/ml (Recombinant fusion partner without these amino acids.)

All lanes :

Performed under reducing conditions.

Observed band size: 32 kDa

Additional bands at: 16 kDa. We are unsure as to the identity of these extra bands.

Please note: All products are "FOR RESEARCH USE ONLY. NOT FOR USE IN DIAGNOSTIC PROCEDURES"

Our Abpromise to you: Quality guaranteed and expert technical support

- Replacement or refund for products not performing as stated on the datasheet
- Valid for 12 months from date of delivery
- Response to your inquiry within 24 hours

- We provide support in Chinese, English, French, German, Japanese and Spanish
- Extensive multi-media technical resources to help you
- We investigate all quality concerns to ensure our products perform to the highest standards

If the product does not perform as described on this datasheet, we will offer a refund or replacement. For full details of the Abpromise, please visit <https://www.abcam.co.jp/abpromise> or contact our technical team.

Terms and conditions

- Guarantee only valid for products bought direct from Abcam or one of our authorized distributors